

# O2.7: Ichthyoplankton surveys



Nicola Hillgruber (UAF)  
Janet Duffy-Anderson (NOAA)  
Jeff Napp (NOAA)  
Ann Matarese (NOAA)  
Lisa Eisner (NOAA)





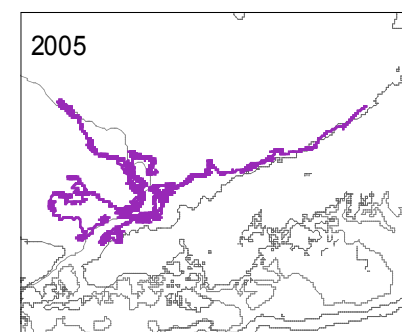
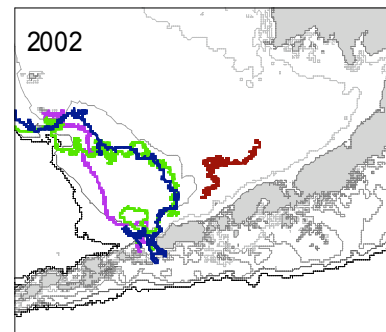
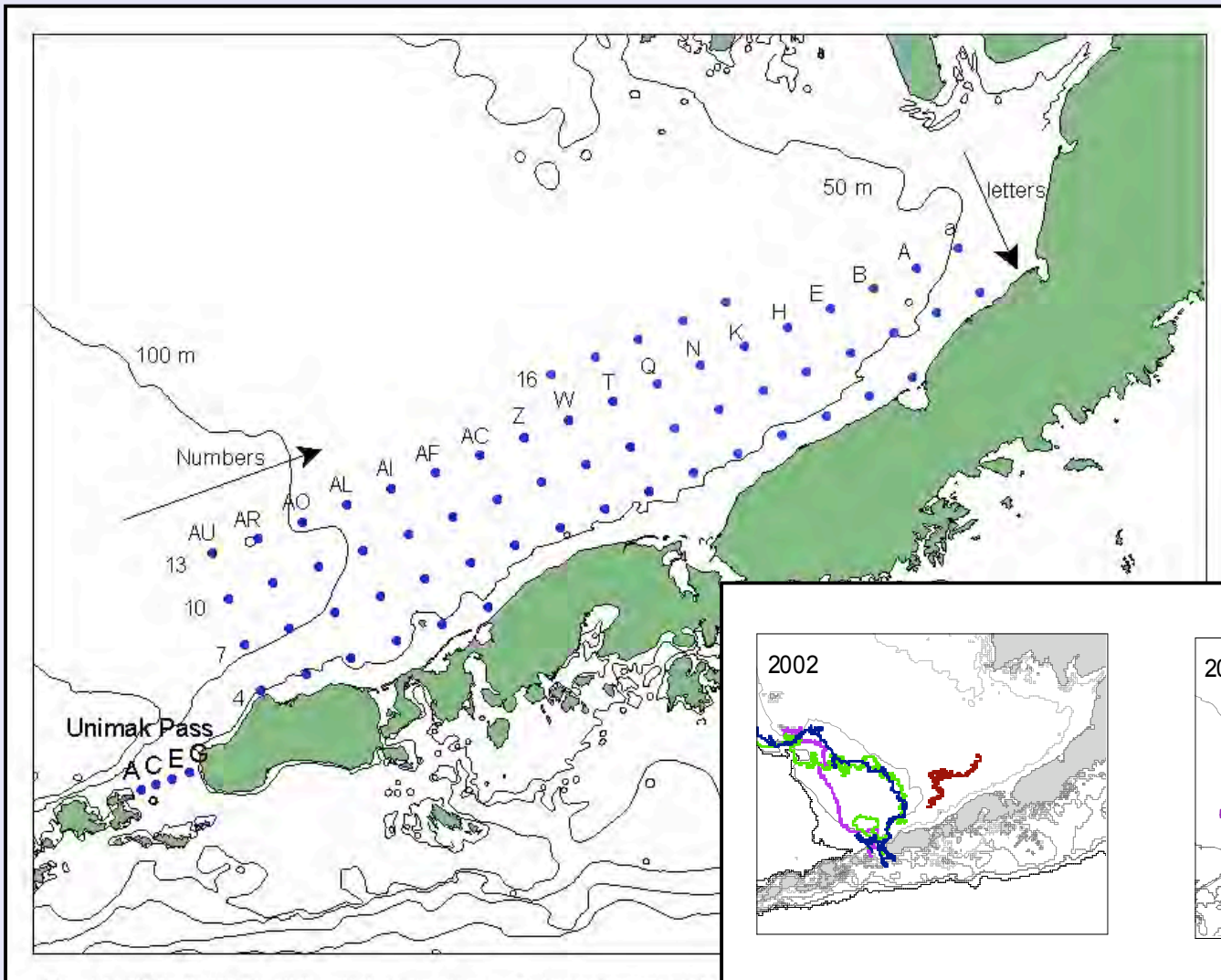
# Goals for this project

- Examine seasonal patterns of horizontal and vertical distribution and abundance of early life stages (ELS) of walleye pollock, Pacific cod and arrowtooth flounder (ATF)
- Examine transport of ELS and its effects on fish production.
- Develop molecular techniques to identify ATF eggs and larvae (M. Canino, NOAA).

# Annual research cruises 2008-10

	Months	Gear	Targets
NPCREP	May 11-20	MOCNESS, Bongo, Neuston net	Eggs: Pollock Larvae: Pollock, cod, ATF
BEST	June 15 – July 15	MultiNet, Neuston net	Post-larvae/juveniles: Pollock, cod, (ATF)
MACE (leg 2)	June 20 – July 8	Midwater trawl, Acoustics, Methot trawl	Age-0 and 1 Juveniles: Pollock
BASIS	August/ September	Surface trawl, acoustics, Bongo	Age-0 & age-1 juveniles: Pollock, cod

# NPCREP survey May 2008-10



# BEST survey: June 15 - July 15

## ● 30 stations

- Provide horizontal and vertical distribution of ELS:
- **MOCNESS** (505/1,000  $\mu\text{m}$ )
  - 5 depth intervals
  - 30-45 min./station
- **Neuston net** (505  $\mu\text{m}$ )
  - 1 depth interval
  - 20 min./station

