

# ALIAS

## ARCTIC LOGISTICS INFORMATION AND SUPPORT

- LOCATION
- TYPE
- MAPS
- DATA
- SEARCH
- HOME
- ABOUT ALIAS
- ARCUS

Help build the ALIAS database!  
[Click here.](#)

**New !**  
Vessels are being added to the ALIAS database

Search for vessels...



...and vessel cruise tracks

[top of page](#)

[Index](#) / [Location](#) / [Type](#) / [Maps](#) / [Data](#) / [Search](#) / [Home](#) / [About](#) / [ARCUS](#)



# ALIAS

## ARCTIC LOGISTICS INFORMATION AND SUPPORT

LOCATION

TYPE

MAPS

DATA

SEARCH

HOME

ABOUT  
ALIAS

ARCUS

ALIAS ENTRY

LOCATION OVERVIEW

The major facilities supporting research in the Arctic are labelled on the map below. Click on a site name for the ALIAS page on that site, click on a region name for greater detail in that region. Scroll down below the map for a [text description](#) and links. Or you may choose a site from the Sites list menu:

Sites list



## ✓ Sites list

Abisko, Sweden  
Atkasuk, Alaska  
Barrow, Alaska  
Cherskii, Russia  
Copenhagen, Denmark  
Council, Alaska  
Dasan Korean Station, Svalbard  
Eureka, Nunavut, CA  
Fairbanks, Alaska  
Grise Fiord, Nunavut, CA  
Harland (NERC) Arctic Station, Svalbard  
Inuvik, NWT, Canada  
Iqaluit, Nunavut, Canada  
Ivotuk, Alaska  
Kangerlussuaq, Greenland  
Kevo, Finland  
Kilpisjärvi, Finland  
Kluane Lake Research Station, Yukon, Canada  
Koldewey – Station, Ny-Ålesund, Svalbard  
Little Diomede, Alaska  
Longyearbyen, Svalbard  
McGill Arctic Research Station, Nunavut, Canada  
NERC (Harland) Arctic Station, Svalbard  
Nome, Alaska  
Nuuk, Greenland  
Ny-Ålesund, Svalbard  
Ny-Ålesund Space Geodetic Observatory, Svalbard  
Oumalik, Alaska  
Prudhoe Bay, Alaska  
Qaanaaq, Greenland  
Resolute, Nunavut, Canada  
Sverdrup Research Station, Svalbard  
Summit Camp, Greenland  
Thule, Greenland  
Toolik Field Station, Alaska  
Tromsø, Norway





# ALIAS

## ARCTIC LOGISTICS INFORMATION AND SUPPORT

- LOCATION
- TYPE
- MAPS
- DATA
- SEARCH
- HOME
- ABOUT ALIAS
- ARCUS

ALASKA
  ATQASUK



Located c.70 miles south of Barrow, Atqasuk (population about 225) provides an inland contrast to the Barrow coastal marine setting in the American Arctic. Atqasuk is adjacent to the Meade River and has been a research location for many decades. The Barrow Arctic Science Consortium is responsible for logistics in the Atqasuk area under the National Science Foundation/BASC Cooperative Agreement.

(information from the [Barrow Arctic Science Consortium web site](#))  
 Page header photo above courtesy of: Taylor McDaniel

- [Location](#) | [Environment Types Accessible at this Location](#) | [Primary Logistics Provider](#) | [Primary Management Agency](#) | [Permits and Legal Issues](#) | [Physical Access](#) | [Infrastructure at the Research Site](#) | [Communications and Data Systems](#) | [Buildings](#) | [Laboratory Space](#) | [Science Support Equipment](#) | [Supplies Available at or Near the Facility](#) | [Personal Safety](#) | [Medical Facilities/Services Available](#) | [Weather Information and Statistics](#) | [Staging Place](#) | [Maps](#) | [Information about Current Research](#)

### Location

Country:	USA
State/Province/Region:	North Slope Borough, Alaska
Description:	Atqasuk is located on the Meade River, 60 miles (97 km) south west of Barrow, Alaska. The village has a population of about 225.
Altitude in feet:	96
Altitude in meters:	29

### Primary Logistics Provider

Name and title of contact person: Glenn W. Sheehan, Executive Director

Address: Barrow Arctic Science Consortium  
P.O. Box 577  
Barrow, AK 99723  
USA

Telephone: 907-852-4881

Fax: 907-852-4882

E-mail: [basc@nuvuk.net](mailto:basc@nuvuk.net)

Contact person or agency web page: <http://www.sfos.uaf.edu/basc/>

### Primary Management Agency

Contact information: P.O. Box 577  
Barrow, AK 99723  
USA

Web site: <http://www.sfos.uaf.edu/basc/>

### Permits and Legal Issues

Courtesy contacts: Check with BASC in Barrow.

Prohibited items: Possession of alcoholic beverages is prohibited in Atqasuk.

### Physical Access

Other modes of Knowledgeable local people also go by snow

## Weather Information and Statistics

Weather information source for the research area: <http://www.wunderground.com/US/AK/Atqasuk.html>  
[http://www.cevl.msu.edu/aef/fieldwork\\_atqasuk.html](http://www.cevl.msu.edu/aef/fieldwork_atqasuk.html)

## Staging Place

Staging place: Barrow.

## Maps

Map sources: Atqasuk is located on the US Geological Survey quads:  
Meade River AK 1:250,000  
Meade River B3 AK 1:63360

These maps can be ordered from the [USGS](#).

Or purchased in Fairbanks at the [Geophysical Institute Map Office](#), at the University of Alaska Fairbanks.

## Information about Current Research

Research sources: [Click here](#) for information on research in the vicinity of Atqasuk from the database of [Veco Polar Resources](#).

# ALIAS

## ARCTIC LOGISTICS INFORMATION AND SUPPORT

LOCATION

TYPE

MAPS

DATA

SEARCH

HOME

ABOUT  
ALIAS

ARCUS

RESOURCES BY TYPE

VESSELS



Here you may browse for vessels in the ALIAS database, organized by:

[Vessel Capabilities](#)   [Country of Ownership](#)   [List All Vessels](#)

Or: [Search for Vessel Cruise Information](#)

## Vessels by Capability

### Icebreakers

[CCGS Louis S. St-Laurent](#), [CCGS Sir Wilfred Laurier](#), [CCGS Terry Fox](#), [Oden](#), [Polarstern](#),  
[R/V Nathaniel B. Palmer](#), [USCG Icebreaker Healy](#), [USCGC Polar Sea](#), [USCGC Polar Star](#), [Ymer](#)

### Ice Strengthened Vessels

[Alpha Helix](#), [Aranda](#), [Dana](#), [Håkon Mosby](#), [Pelagia](#), [R/V Jan Mayen](#), [R/V Lance](#)

### Other Vessels

[Annika Marie](#), [Bjarni Sæmundsson](#), [Heincke](#), [Johan Hjort](#), [Magnus Heinason](#), [Maurice Ewing](#), [Oceanus](#), [R/V Fangst](#), [Xue Long \(Snow Dragon\)](#)

## Vessels by Country

Canada



# ALIAS

## ARCTIC LOGISTICS INFORMATION AND SUPPORT

LOCATION

TYPE

MAPS

DATA

SEARCH

HOME

ABOUT  
ALIAS

ARCUS

VESSELS

USCGC HEALY



The USCG Cutter Healy is designed to conduct a wide range of research activities, providing more than 4,200 square feet (390 m<sup>2</sup>) of lab space, numerous electronic sensor systems, oceanographic winches, and accommodations for up to 50 scientists. HEALY is designed to break 4 feet (1.2 m) of ice continuously at three knots (5.6 kph) and can operate in temperatures as low as -50 degrees F (-46C).

The Icebreaker Healy has its own web page at: <http://www.uscg.mil/pacarea/healy/> which contains full information on the ship's specifications, scientific gear, and scientist accommodations. There is also an excellent science cruise planning guide which should be read by anyone interested in using the Healy for research support.



Information and photos courtesy of USCG

[Vessel Ownership](#) | [Vessel Activities and Operating Areas](#) | [Primary Logistics Provider](#) | [Primary Management Agency](#) | [Availability and Cost](#) | [Vessel Characteristics](#) | [Vessel Performance and Capabilities](#) | [Accommodations](#) | [Communications and Data Systems](#) | [Laboratory Space](#) | [A-Frames](#) | [Cranes](#) | [Winches, Wires and Cables](#) | [Other Science Features](#) | [Handbook](#) | [Staging Place](#) | [Information about Current Research](#)

## Vessel Performance and Capabilities

Range in nautical miles:	21500
Icebreaking capability:	4.5 ft at 3 knots continuous, 8' backing and ramming
Cruising speed (knots, open water) :	12 knots cruising, 17 knots maximum

## Accommodations

Number of scientist beds or berths:	35
Number of staff or crew beds/berths:	85
Visitor capacity:	2

## Communications and Data Systems

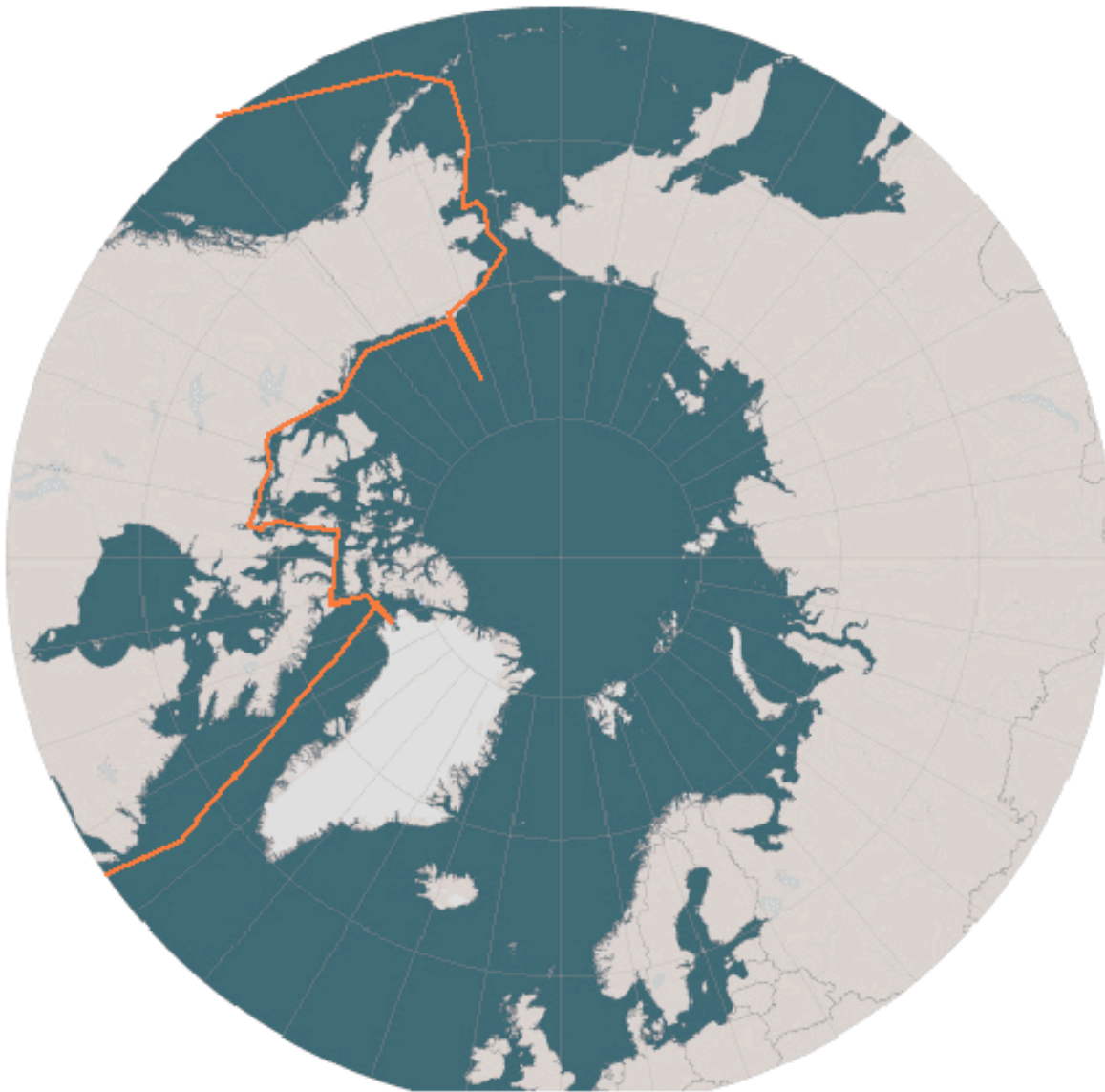
Local area network (LAN), Internet access, Fax send/receive, Telephone system

Network: Science Data Network - dual fiber-optic network with 120 Ethernet ports throughout the science spaces for real-time data transfer, provided with processors, plotters, printers, GPS master clock, installed workstations.

---

**2003**

Baffin Bay, Barrow, Lancaster Sound, Nares Strait, Nome, AK, North Atlantic, North Pacific, Northwest Passage, Northwind Ridge, Resolute Bay, Thule, St John's, Seattle





[Maurice Ewing](#)

2003

Locations Visited: , Bergen, Norwegian Sea, Storegga Slide



[Polarstern](#)

2003

Locations Visited: Bremerhaven, Fram Strait, Longyearbyen, Norwegian Sea, Storfjord, Svalbard



[R/V Pelagia](#)

2003

Locations Visited: Galway , Iceland Basin, North Atlantic

*Pelagia 8/22/2003 Galway*

*Netherlands 9/11/2003 Galway Iceland Basin CAMP/LOCO van Aken, H*



[USCG Icebreaker Healy](#)

2003

Locations Visited: Baffin Bay, Barrow, Lancaster Sound, Nares Strait, Nome, AK, North Atlantic, North Pacific, Northwest Passage, Northwind Ridge, Resolute Bay, Seattle, St John's, Thule

# ALIAS

## ARCTIC LOGISTICS INFORMATION AND SUPPORT

LOCATION

TYPE

MAPS

DATA

SEARCH

HOME

ABOUT  
ALIAS

ARCUS

LOCATION OVERVIEW

ALASKA OVERVIEW



## Staging Place

Staging place: Barrow.

## Maps

Map sources: Atqasuk is located on the US Geological Survey quads:  
Meade River AK 1:250,000  
Meade River B3 AK 1:63360

These maps can be ordered from the [USGS](#).

Or purchased in Fairbanks at the [Geophysical Institute Map Office](#), at the University of Alaska Fairbanks.

## Information about Current Research

Research sources: [Click here](#) for information on research in the vicinity of Atqasuk from the database of [Veco Polar Resources](#).

## NSF Arctic Field Projects

Region:	Field Location:	Season:	VPR Support:	SubRegion	PI Name
	Atqasuk;				

<b>Dr. Susan Allen-Gil</b>	<b>Ithaca College Department of Biology</b>	
----------------------------	---	--

email: [sallen@ithaca.edu](mailto:sallen@ithaca.edu)

Phone: 607.274.1066

Grant#: Sources of organochlorine contaminants in inland subsistence fisheries in northern Alaska: atmospheric vs. anadromous inputs

**ANS-Dionne,  
Jane**

### Project Web Site(s):

<http://www.arcticscience.org>

<http://www.ithaca.edu/faculty/sallen/Arctic/WebpageArctic.htm>

[http://www.ithaca.edu/faculty/sallen/arctic\\_2002/arctic\\_home.html](http://www.ithaca.edu/faculty/sallen/arctic_2002/arctic_home.html)

### Science:

With this collaborative project, the principal investigators will study two sources of pollutants in arctic freshwater environments: atmospheric contaminants, and anadromous fish--that is, fish that live most of their lives in the ocean, migrating to fresh water streams to spawn (for example, salmon). Investigators will examine the relative importance of these two methods of contamination for freshwater systems of western Alaska using landlocked (or closed) lakes and lakes connected by a river to the sea (open lakes). The arctic grayling and the least cisco (an anadromous fish) are both important subsistence fishes in the western Arctic. In sub-arctic regions, graylings have been found to have higher contaminant concentrations and a different fingerprint of organochlorine (OC) contaminants in lakes where they co-exist with sockeye salmon. Researchers will try to determine whether the same is true in the Arctic where OCs are believed to come primarily from atmospheric sources.

### Logistics:

All logistics covered under Ford, 9979695

**Season/Camp**

**Date In:**

**Date Out:**

**#People:**

**2000**

Visit the United States Geological Survey Web site at: <http://www.usgs.gov> for a vast amount of information on map products.

### **Marine and Aeronautical Navigational Charts**

Coastal navigational charts are available through the Coast Survey, a division of NOAA. They can be ordered online at their website : <http://chartmaker.ncd.noaa.gov/>

Aeronautical charts are a product of the Federal Aviation Administration (FAA), and are not available for ordering online.

The National Aeronautical Charting Office (NACO) provides information about aeronautical charts, and a list of sales agents for both types of charts, at their website: <http://www.naco.faa.gov/Agents.asp>

---

### **Information about Current Research**

#### Research sources:

[Click here](#) for information on research in the vicinity of Barrow from the database of [Veco Polar Resources](#).

The [Barrow Area Information Database \(BAID\)](#) is under development by the [Arctic Ecology Laboratory](#) of Michigan State University. BAID is an online, map-searchable database of research in the [Barrow Environmental Observatory \(BEO\)](#).

Also see information on [the BASC web site](#).

#### Reference sources:

Contact Glenn Sheehan, Executive Director, at 907-852-4881 or 1-888-NARL-SCI, [basc@nuvuk.net](mailto:basc@nuvuk.net), or by fax 907-852-4882.

---



# B A I D - I M S

barrow area info database internet map server

How Do I...?



## LAYERS

- All Layers
- Imagery
  - Airborne
    - CIR
    - BWP
    - IFSAR(20m)
  - Satellite
    - Landsat (30m)
    - Ikonos (1m)
- Themes
  - Base Maps
  - Boundaries
  - Infrastructure
  - Research
  - Landcover
  - Fauna
  - Hydrography
  - Coastline

Redraw Map

## Help:

- A closed group, click to open.
- An open group, click to close.
- A map layer.
- A hidden group/layer, click to make visible.
- A visible group/layer, click to hide.
- A visible layer, but not at this scale.

Copyright (C) BASC 2003



[About the Directory](#)

[Quick Search](#)

[Detailed Search](#)

[Individual Survey Form](#)

[Download PDF versions](#)

# Detailed Search of the Directory of Arctic Researchers

You wanted to find records containing "**tweedie**" and view them sorted by **Last Name**.  
 Your search returned **1** match out of **3817** researcher records.  
 Displaying record 1 through 1 of 1.

<p><b>Name</b> Craig E. Tweedie</p> <p><b>Department</b> Department of Botany and Plant Pathology - Arctic Ecology La</p> <p><b>Organization</b> Michigan State University</p> <p><b>Address</b> 224 North Kedzie Hall East Lansing, MI 48824 USA</p> <p><b>Phone</b> 517/355-1285</p> <p><b>Fax</b> 517/432-2150</p> <p><b>Email</b> <a href="mailto:tweedie@msu.edu">tweedie@msu.edu</a></p>	<p><b>Specialties</b></p> <ul style="list-style-type: none"> <li>climate change</li> <li>plant ecology</li> <li>landscape ecology</li> </ul> <p><b>Current Research</b></p> <p>International Tundra Experiment (ITEX). Forecasting Arctic Vegetation change with climate change and surface disturbance (FAV).</p>
--	--

---

You wanted to find records containing "**tweedie**" and view them sorted by **Last Name**.  
 Your search returned **1** match out of **3817** researcher records.  
 Displaying record 1 through 1 of 1.

---