

Benthic Ecosystem Response to Changing Ice Cover in the Bering Sea (BEST)



Objectives

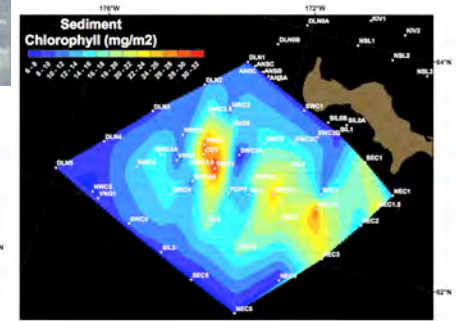
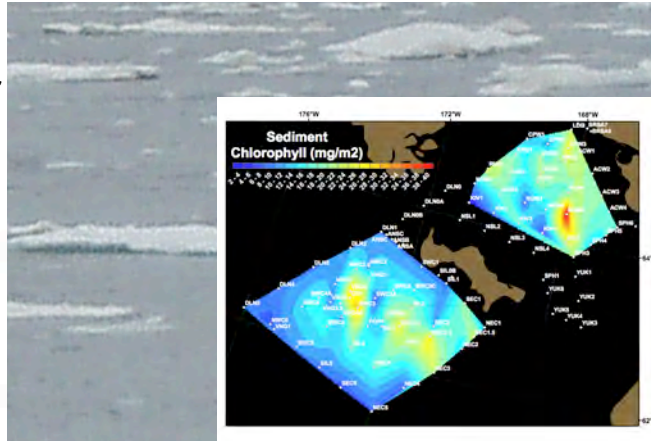
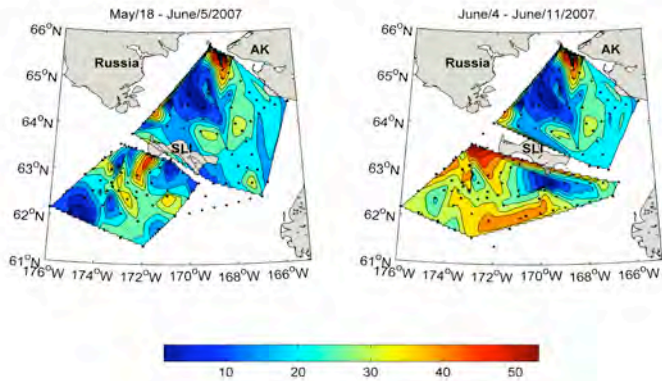
- track spring production to benthos
- carbon supply via sediment oxygen uptake rates
- benthic infaunal population structure and biomass
- benthic camera for epifauna walrus-prey patch dynamics (BSIERP)
- sediment tracers (TOC, chl a, Be-7, grain size)

*PIs: Jackie Grebmeier
and Lee Cooper,
University of
Maryland Center for
Environmental
Science*

*Work integrated
within BSIERP
Patch Dynamics*



Dynamics of chlorophyll sinking in water column relative to inventories on sea floor



Stable oxygen isotope composition of seawater to determine freshwater components derived from sea ice and runoff

Beryllium-7 inventories in sea ice relative to appearance on sea floor

Primary shelf sampling: Camera use <150 m; van Veen grabs <500 m

