

---

# **Welcome to the 24<sup>th</sup> ARCUS Annual Meeting**

Wednesday, 2 May 2012  
Pew Conference Center  
Washington, D.C.

ARCUS



Slides will be shown here

Exit the presentation

**Click** to Talk,  
**Unclick** to finish talking

Raise your hand to ask a question

Share with emoticons

List of all participants

Chat with one person or the entire group

The screenshot displays the Blackboard Collaborate interface. The main window shows a presentation slide titled "Welcome to Blackboard Collaborate" with the ARCUS logo and the text "Arctic Research Consortium of the United States". The sidebar on the left contains several sections: "AUDIO & VIDEO" with a "Talk" button and a "Video" button; "PARTICIPANTS" with a list of users including Sarah Crowley and Arctic Research Consortium of the US; "MAIN ROOM" with a list of users; and "CHAT" with a list of messages. A blue arrow points from the text "Slides will be shown here" to the top of the presentation slide. Another blue arrow points from the text "Exit the presentation" to the top of the sidebar. A third blue arrow points from the text "Click to Talk, Unclick to finish talking" to the "Talk" button. A fourth blue arrow points from the text "Raise your hand to ask a question" to the hand icon in the participants list. A fifth blue arrow points from the text "Share with emoticons" to the emoticon icon in the participants list. A sixth blue arrow points from the text "List of all participants" to the participants list. A seventh blue arrow points from the text "Chat with one person or the entire group" to the chat list.

## Please Note:

- Participants using the telephone can mute/unmute by **pressing \*6** on the phone.
- Today's event will be recorded and archived.

# Agenda Outline

---

- Welcome and Introductions
- Board Member Election Results
- Recognition of Outgoing Board Members
- Annual Report of the Corporation
  - Program Report
  - Financial Report



# Board Member Election

---

- **Board Nominees:**
  - Seat 4: Timo Koivurova; Arctic Centre, University of Lapland
  - Seat 5: Mark Ivey; Sandia National Laboratories
  - Seat 6: Barry Zellen; Digital Consulting Services
  - Seat 7: Mark Nuttall; University of Alberta
  - Seat 7: Marianne Douglas; University of Alberta
- **Electronic voting process complete; nominees were approved by Council**





# **Outgoing Board Members**

---

We would like to thank:

**Bruce Forbes  
Andrea Lloyd  
Rune Storvold  
Bernard Zak**

**For their dedicated service  
to ARCUS.**

ARCUS



# Annual Report of the Corporation

---

- Vera Alexander, Board President
- Helen Wiggins, Director of Programs
- Susan Fox, Executive Director





# ARCUS Program Highlights

Helen V. Wiggins, Director of Programs  
2012 Annual Meeting: Annual Report Presentation



# Presentation Outline

---

1. ARCUS Staff
2. Community Science Planning
3. Information and Outreach
4. Education-PolarTREC
5. Thoughts on the Future of ARCUS Programs





# Staff



**ADA BOWER**  
Business Manager



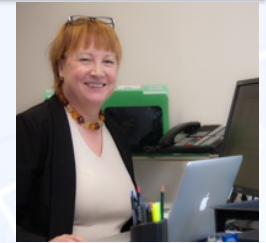
**KRISTINA CREEK**  
Executive Coordinator



**SARAH CROWLEY**  
Project Manager



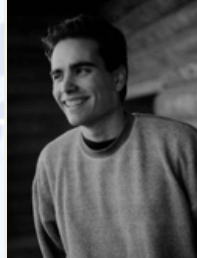
**JUDY FAHNESTOCK**  
Project Assistant



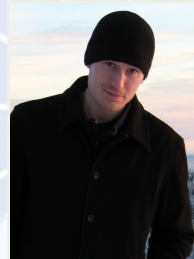
**SUSAN FOX**  
Executive Director



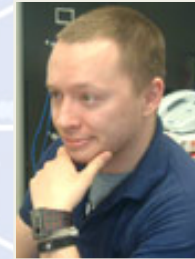
**LESLIE KITCHEN**  
Administrative Assistant



**RONNIE OWENS**  
Web Developer



**JOED POLLY**  
Video/Online Media



**ZEB POLLY**  
Systems  
Administrator



**CHARLOTTE RILL**  
Accountant



**REIJA SHNORO**  
Project Manager



**BETSY TURNER-BOGREN**  
Project Manager



**JANET WARBURTON**  
Project Manager



**HELEN WIGGINS**  
Director of Programs



# Community Science Planning (I)

---

## Study of Environmental Arctic Change (SEARCH)

- **Strategic Planning**

- Began as a result of memo from ARCUS to NSF/SEARCH leadership – need to clarify and focus SEARCH's goals
- Steering Committee (SC) has drafted Vision & Mission - help society understand and respond to a changing Arctic
- SC has drafted 5-Year Science Goals - sea ice, permafrost, land-ice, society/policy; community review (due 14 May)
- Will develop new SEARCH organizational & science support structure, with specific activities





# Community Science Planning (II)

---

## **SEARCH** *(continued)*



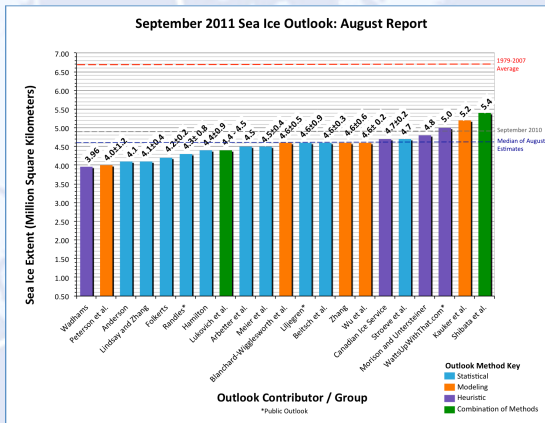
- **Arctic Observing Network (AON)**
  - US Arctic Observing Coordination Workshop – March 2012; report out early fall
  - **AON Design and Implementation** – Report late summer
  - Planning for a 2013 International Arctic Observing Summit
- **Understanding Arctic Change Task Force**
  - Report points to new kinds of integrative activities; updates overarching science questions
- **Responding to Change:** ISAC report
- Poised for a new chapter in SEARCH

# Community Science Planning (III)



## SEARCH (continued)

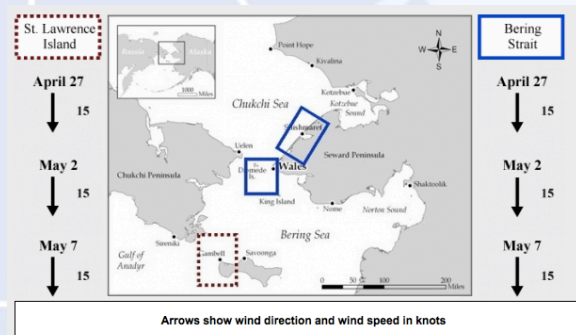
- **Sea Ice Outlook & Sea Ice for Walrus Outlook**
  - Cited by National Academies, USARC as critical projects in advancing arctic science
  - Plans for expanding and formalizing for 2013



### Comments From Wales

28 April 2012 - Winton Weyapuk Jr.

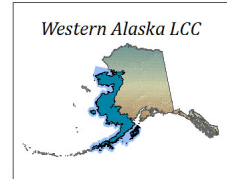
Winds mainly from the northeast have kept open a lead along the shorefast ice which sometimes extends to 12 miles or 15 miles north. Pack ice continues moving north with the current. Large ponds and leads were shown further out during the week as dark water sky.





# Community Science Planning (IV)

- **Western Alaska Landscape Conservation Cooperative** (<http://www.arcus.org/western-alaska-lcc>)



- Series of local community meetings fall 2010; Science workshop 2011; Final report out this summer
- Represents a formal, funded effort for science coordinated across agencies

- **Canada-US Oil & Gas Research Forum**

- Final product developed – recommendations for northern oil/gas research



- **National Park Service Symposium**

- Fall 2011 – Southwest AK Park Science Symposium



# Information and Outreach (I)

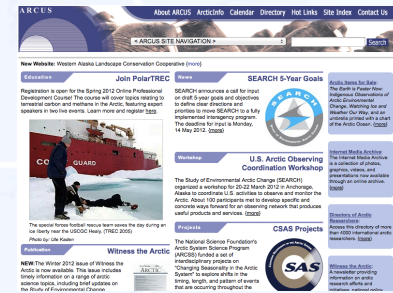
---

- **ArcticInfo** – Over 7,000 subscribers (subscribers and number of announcements growing every year)
- **Arctic Visiting Speakers Series** – Each year, tours reach several hundred audience members (elementary/middle/high school students, universities, public); 8-10 tours/year. Focusing on new or underserved audiences.
- **Witness the Arctic** – Online issues 3x/year; reader survey completed; 1<sup>st</sup> call for contributions from the broader community in April



# Information and Outreach (II)

- **AGU Community Meeting Room** – Important venue for networking; 26 groups used room in 2011
- **Directory of Arctic Researchers** – Over 4,100 researchers in the directory; planning user survey this summer
- **Internet Media Archive** – Nearly 30,000 photos, video from meetings, logos; will launch in new system this summer
- **Arctic Calendar** – One-stop-shop for schedule of arctic meetings and events
- **Website** (includes all programs) – Portal to all activities and resources; in over over 520,000 page views/159,000 unique visitors in 2010); looking at design, structure, functionality





# Education: PolarTREC

## Teachers and Researchers Exploring and Collaborating (2010-2014)

The goal of PolarTREC is to advance polar science education through **improved teacher content knowledge** and **instructional practices**, **expand researcher understanding** of the education system, and to **enrich the outreach and dissemination of polar research** across all disciplines.





# Education: PolarTREC

---

Teachers selected for the program travel with the researchers and their team to their polar field sites for 2-8 weeks

**Program Activities** - More than the field experience

- Thorough Selection Process; Researchers Make Final Selections
- Detailed Logistic Support
- Substitute & Other Expenses Covered
- Alumni Involvement
- Pre\Post Expedition Travel Support
- Long-term Access to Resources & Support

**Examples of key outcomes (since 2006):**

- Over 80 lesson plans developed and posted online
- Over 20,000 participants have joined live events



# A Few Thoughts on the Future...

- Clarity in focus for the future – clearly define our niche and goals for ARCUS activities
- What are the areas where ARCUS may be uniquely positioned and will give the most “bang-for-the-buck”?
- What new or different activities are needed that we aren’t currently doing?
- Increase funding diversity of programs
- More specific & proposal-driven projects
- Integration across projects



---

# Thank You!

## *Questions?*

**[www.arcus.org](http://www.arcus.org)**

*Advancing understanding of the Arctic through  
planning, coordination, education, and outreach*

ARCUS







# ARCUS Finance Presentation

Susan E. Fox, Executive Director  
2012 Annual Meeting: Annual Report Presentation





# Year Ended

---

30 September 2011

- Basic Budget with supplements
- Accountability & Transparency



# Revenue By Source

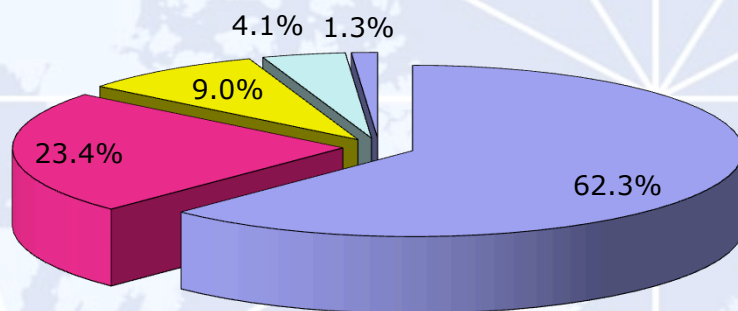
---

**Fiscal Year Ending  
September 2011**



# Revenue by Source

## October 2010 - September 2011



■ NSF Cooperative Agreement (62%)

■ NSF PolarTREC (24%)

■ USFWS (9%)

■ Other (4%)

■ ARUCS Unrestricted Funds (1%)



# Audit

---

Year Ended 30 September 2011

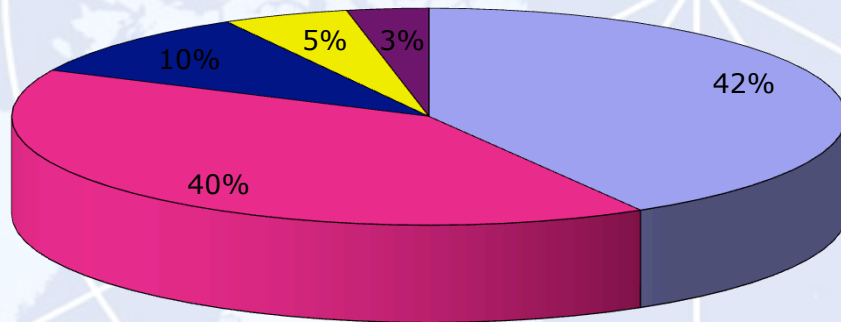
- Direct Expenses by Activity Category
- Unrestricted Fund Balance





# Direct Expenses by Activity Category

October 2010 - September 2011  
ALL SOURCES



■ Outreach and information=42%

■ Arctic Logistics=40%

■ Core Support=10%

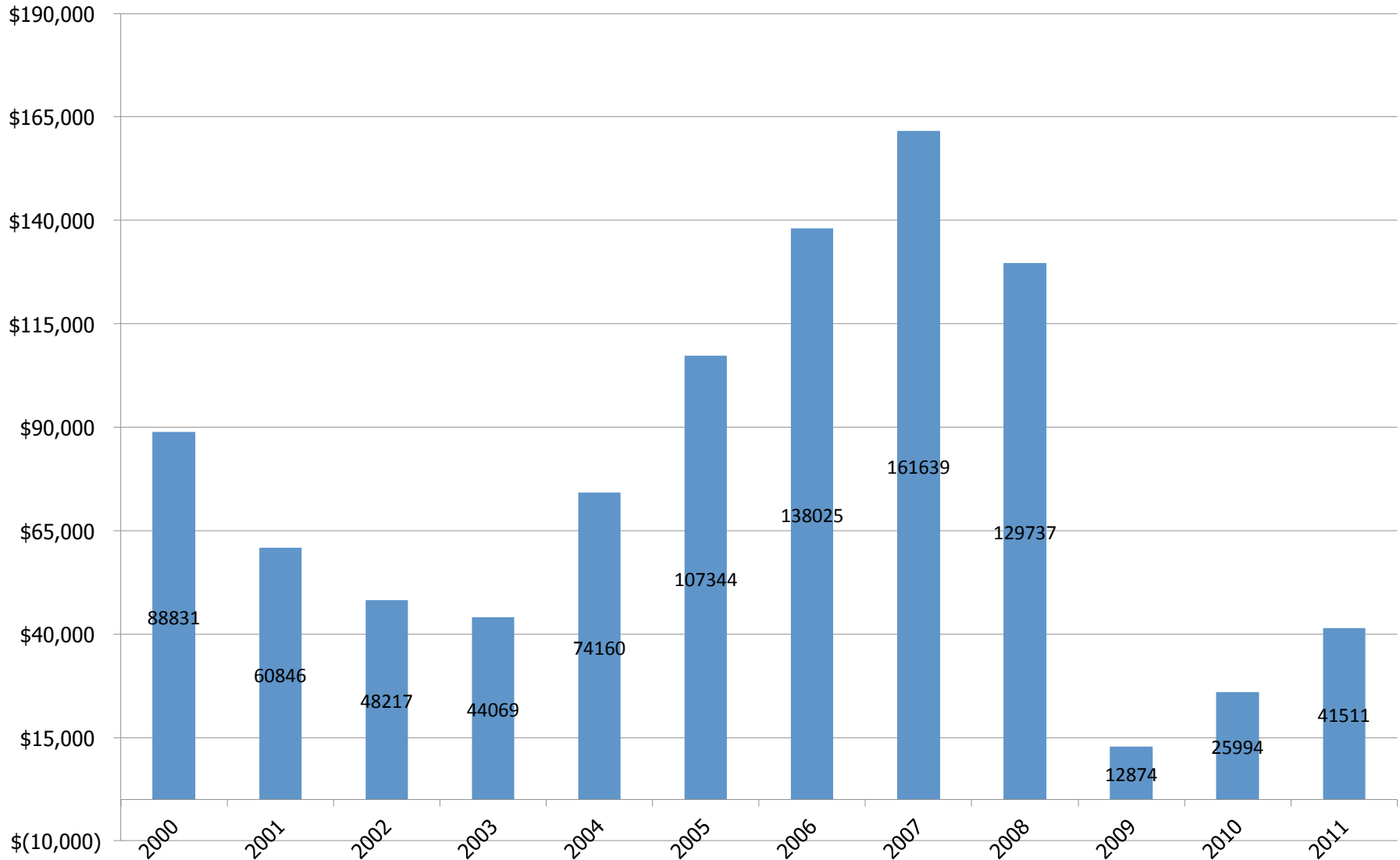
■ U.S. Arctic science support=5%

■ Arctic science education=3%



# ARCUS Unrestricted Fund Balance 2000 - 2011

## 1 October to 30 September



# Arctic Research Consortium of the United States

---

## 2012

- NSF Cooperative Agreement
- PolarTREC
- New 2013 NSF Cooperative Agreement
- Other contracts





# Arctic Research Consortium of the United States

---

# Questions?



# Other Business

---

- Other member business, as needed





# Thank You!

---



*Kronebreen glacier, Svalbard, Norway. Photo by Jan-Gunnar Winther*

