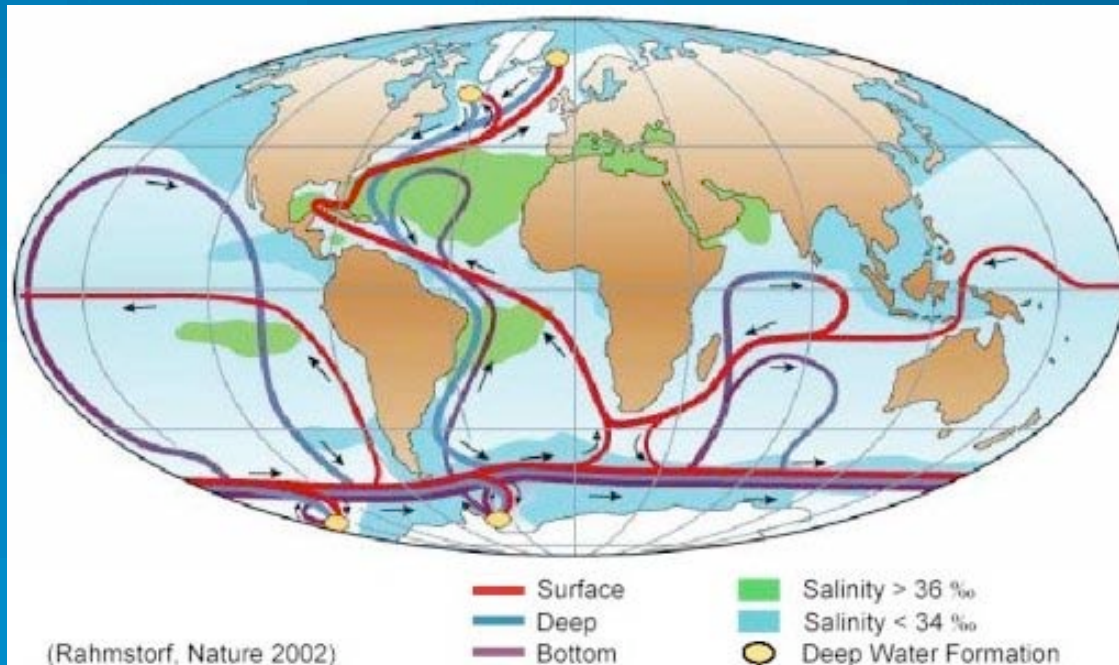
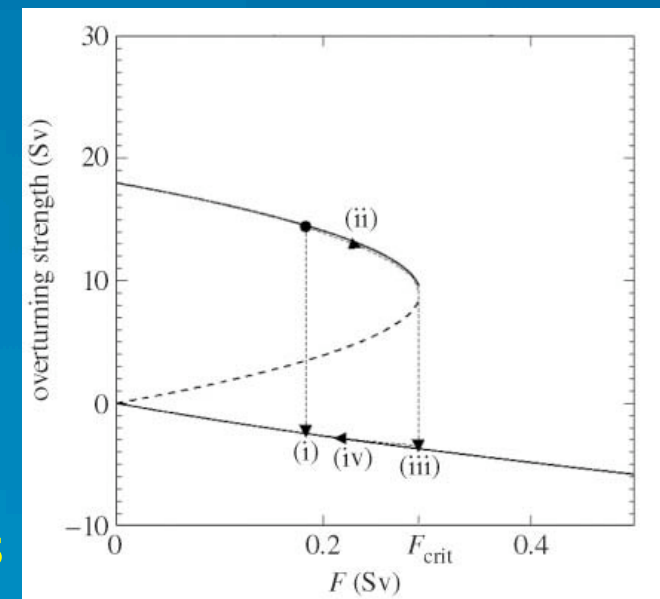


Abrupt Change of the Thermohaline Circulation

NCAR



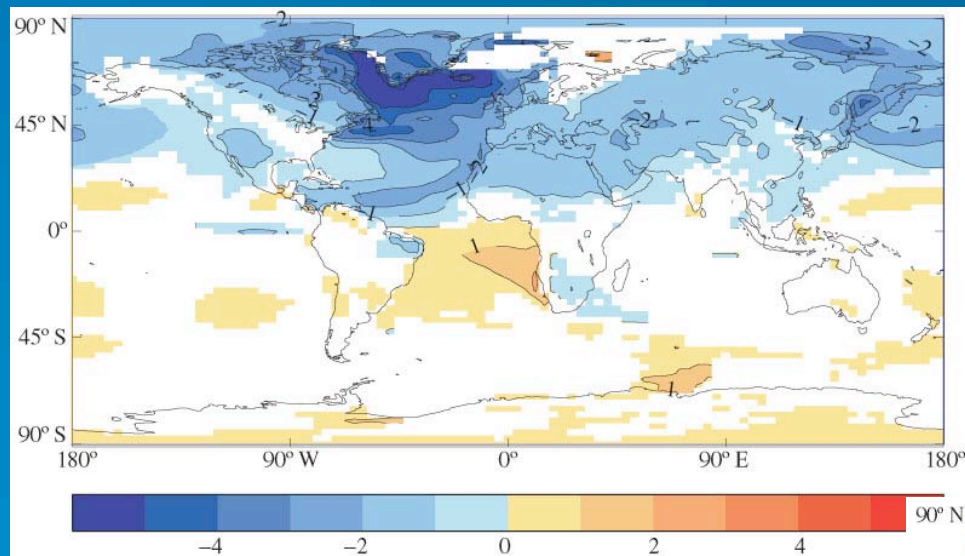
Idealized map of pathways and transports for NADW formation



Simple "Stommel" model of THC thresholds

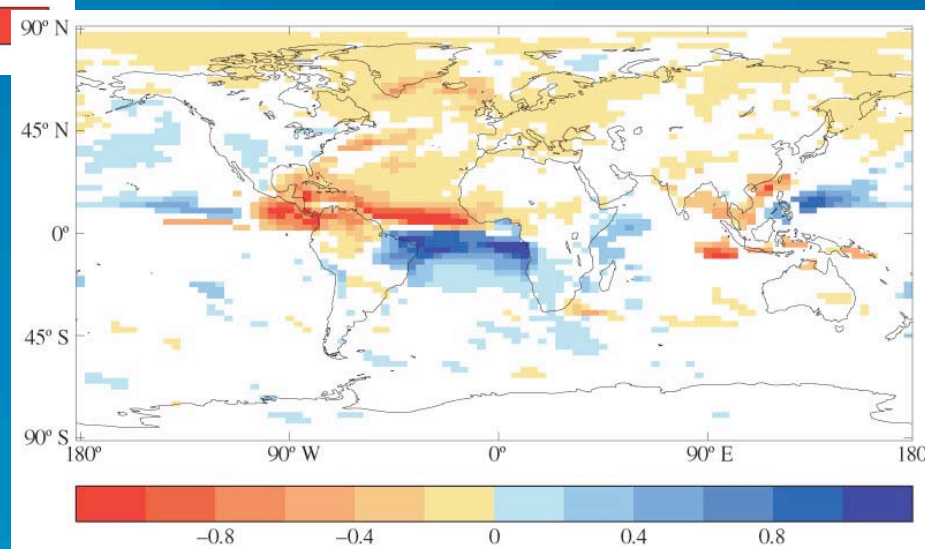
Response of a climate model to THC shutdown

NCAR

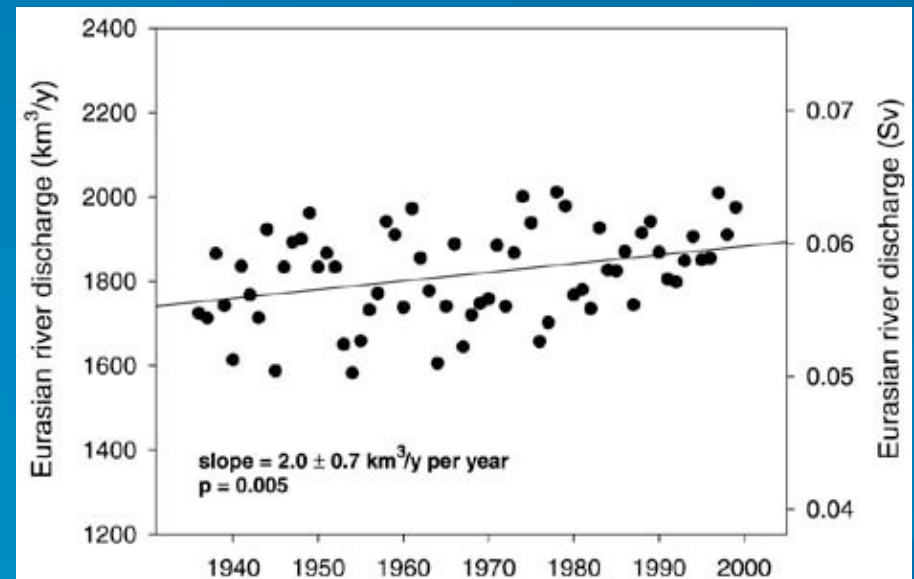
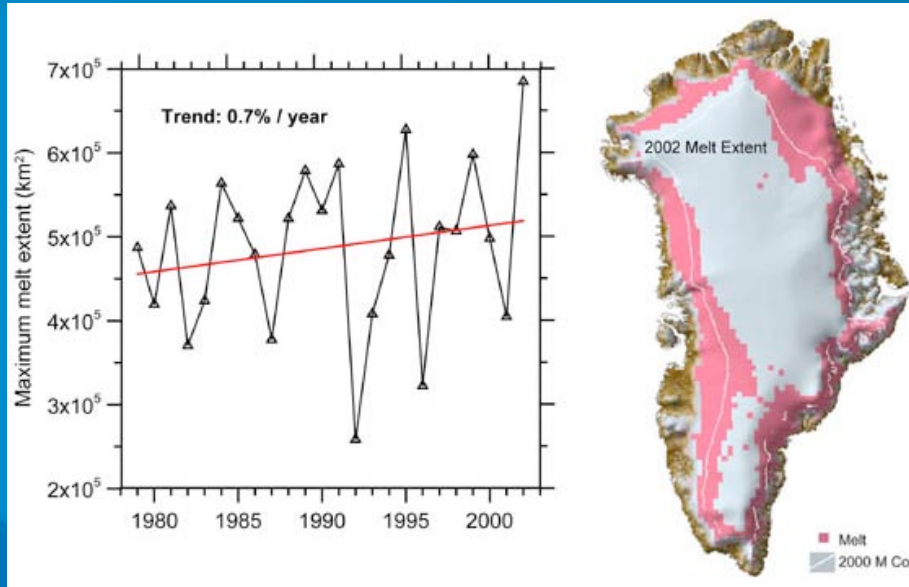
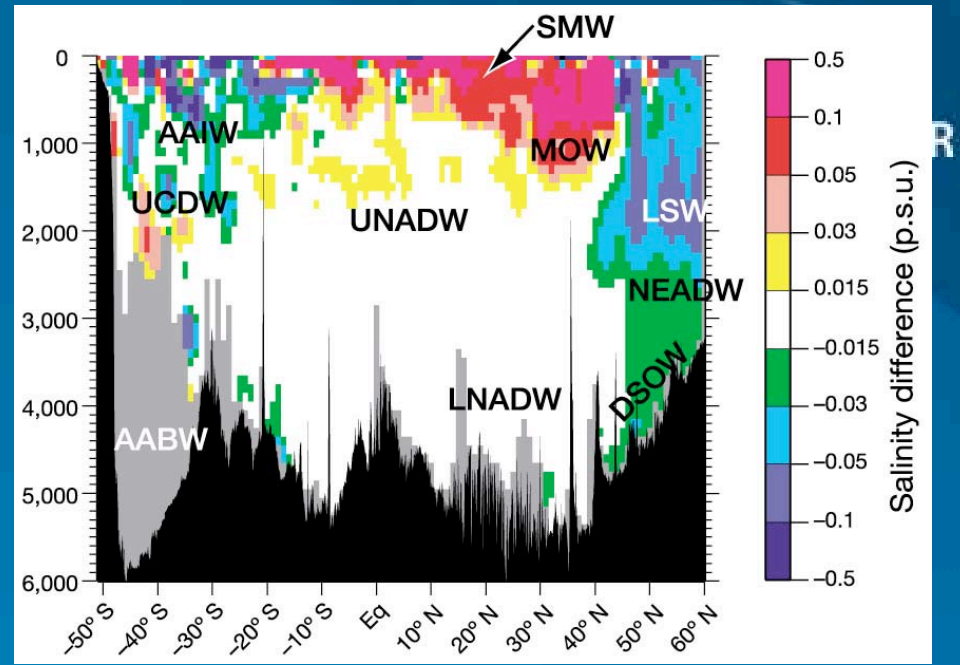


Surface temperature change
in third decade

Precipitation-minus-evaporation
change in third decade

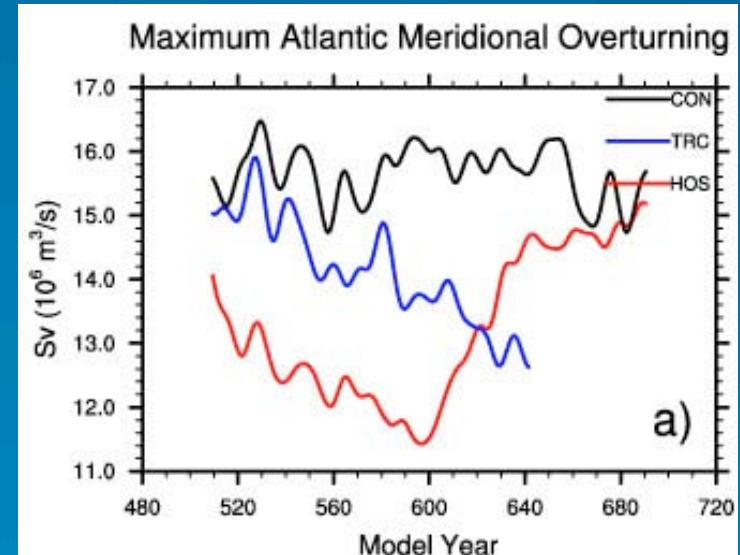
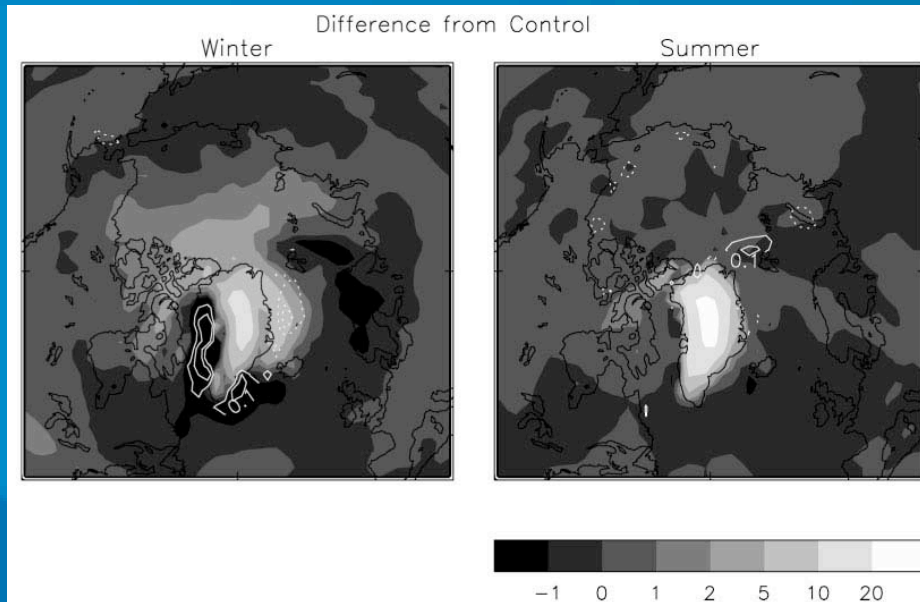
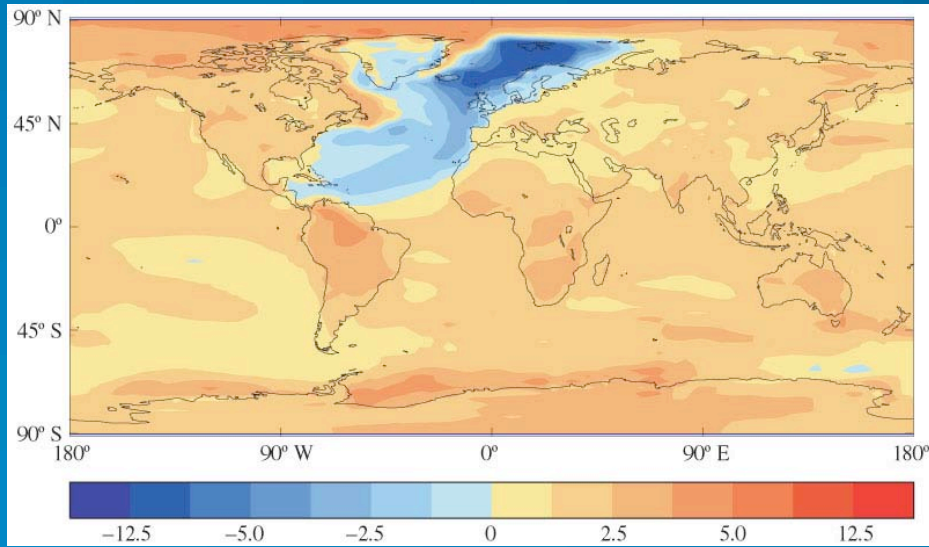


What is happening in the North Atlantic and Arctic at present?



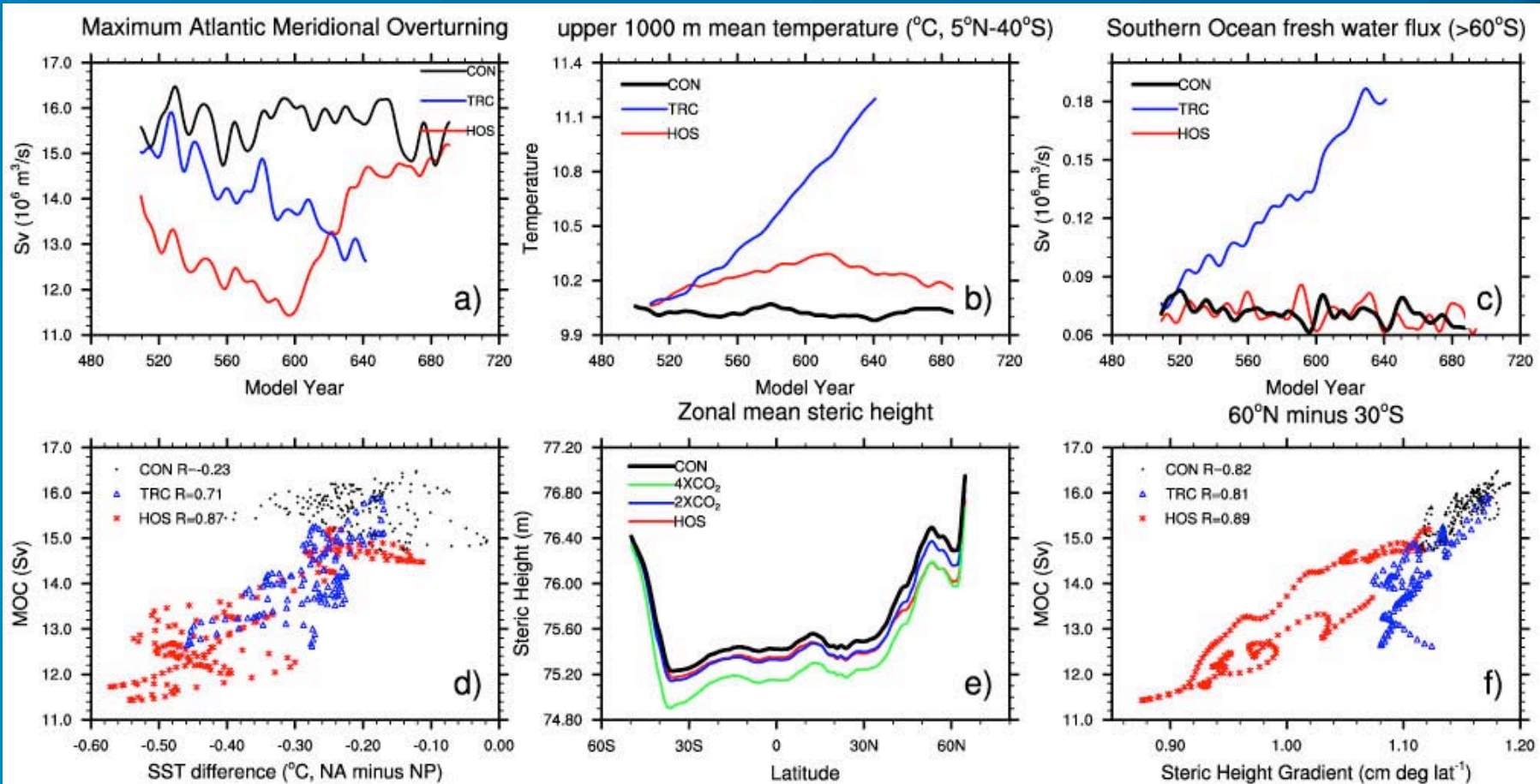
Response of a climate models to future warming

NCAR

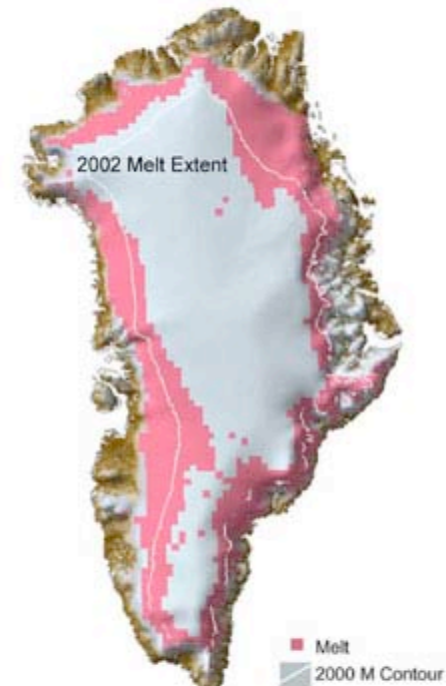
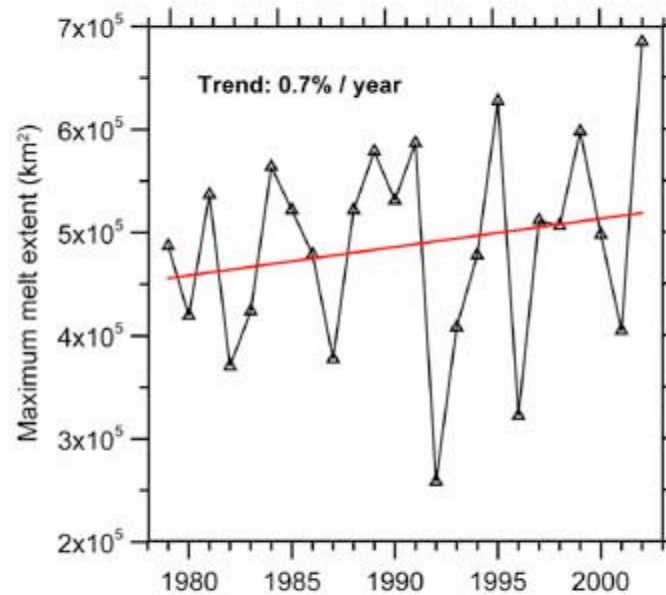
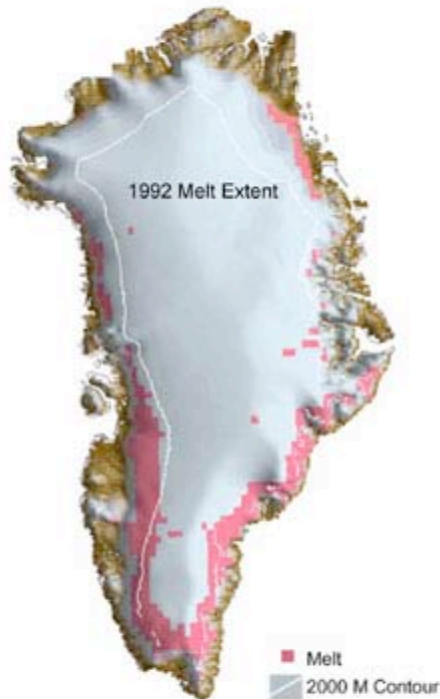


Response of MOC to transient climate change is a result of several competing processes

NCAR



Response of the Greenland Ice Sheet to Climatic Forcing



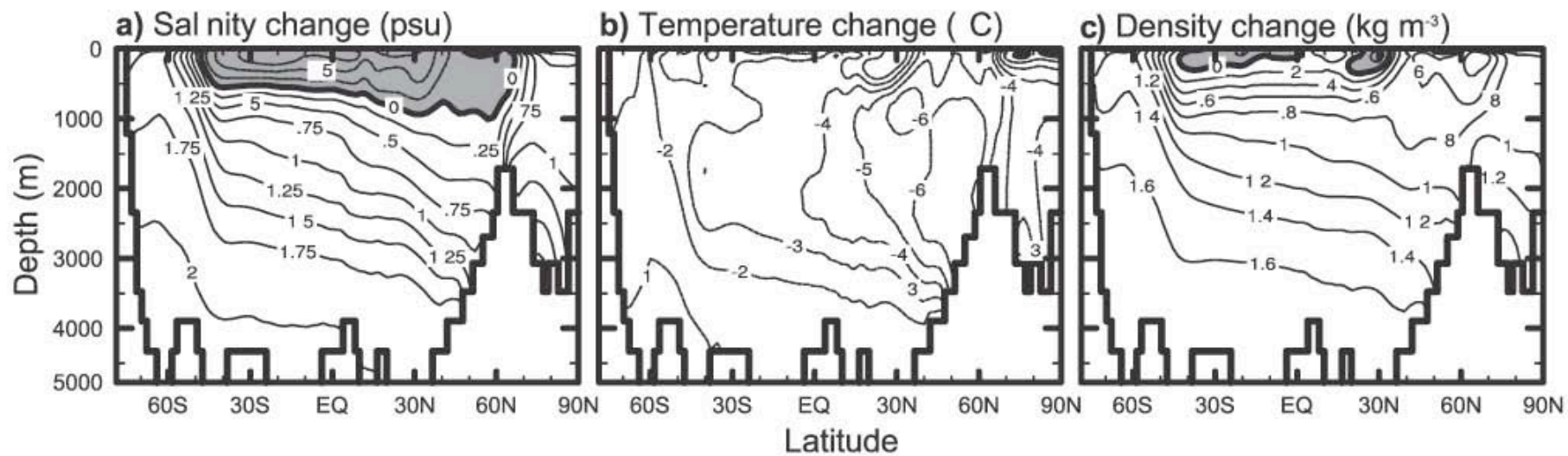
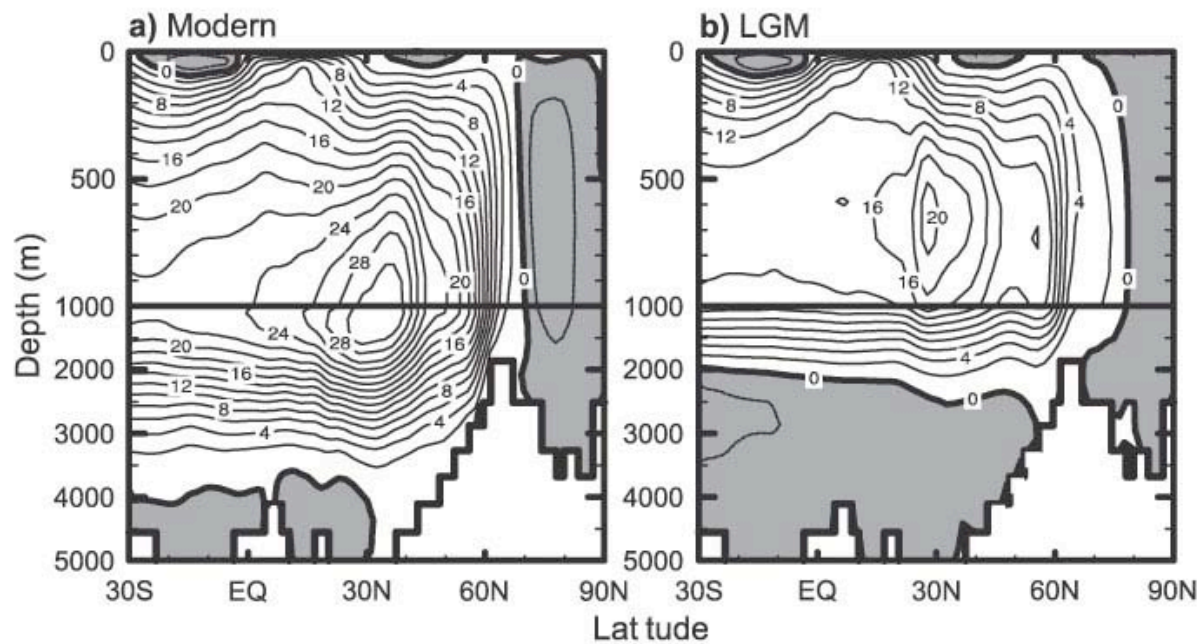
Greenland ice sheet melt area increased on average by 16% from 1979 to 2002. The smallest melt extent was observed after the Mt. Pinatubo eruption in 1992



University of Colorado

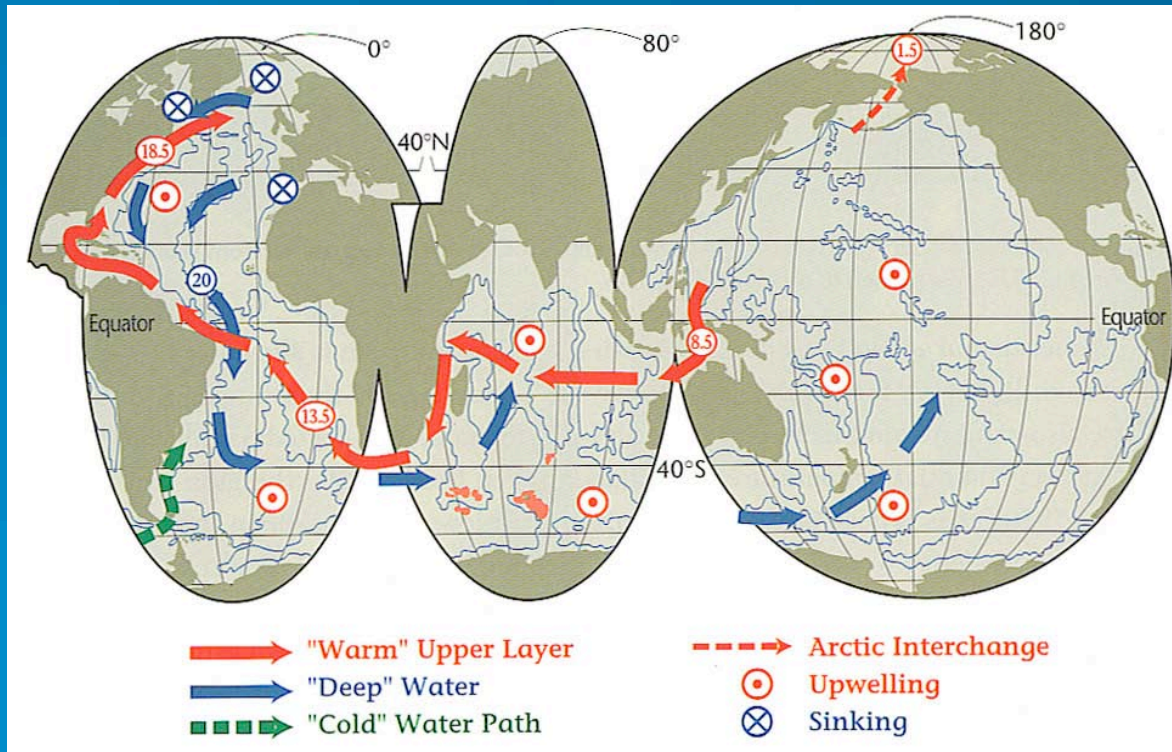
Konrad Steffen and Russell Huff, University of Colorado at Boulder



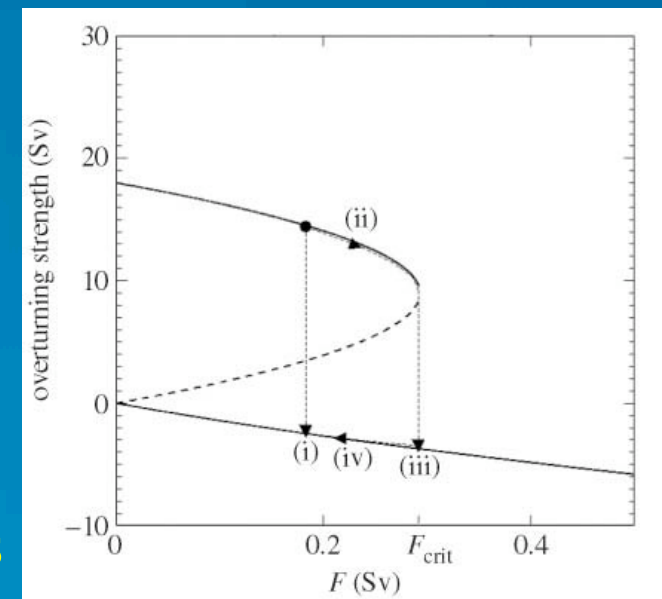


Abrupt Change of the Thermohaline Circulation

NCAR



Idealized map of pathways and transports for NADW formation



Simple "Stommel" model of THC thresholds