

I am interested in exploring this topic with a team of interdisciplinary collaborators!

Arctic environments are changing rapidly in response to global climate change, necessitating social-ecological **adaptations** to address risks.

Methods need to be available to identify **spatial** social-ecological processes for adaptation interventions that are **community-backed and ecologically sound**.

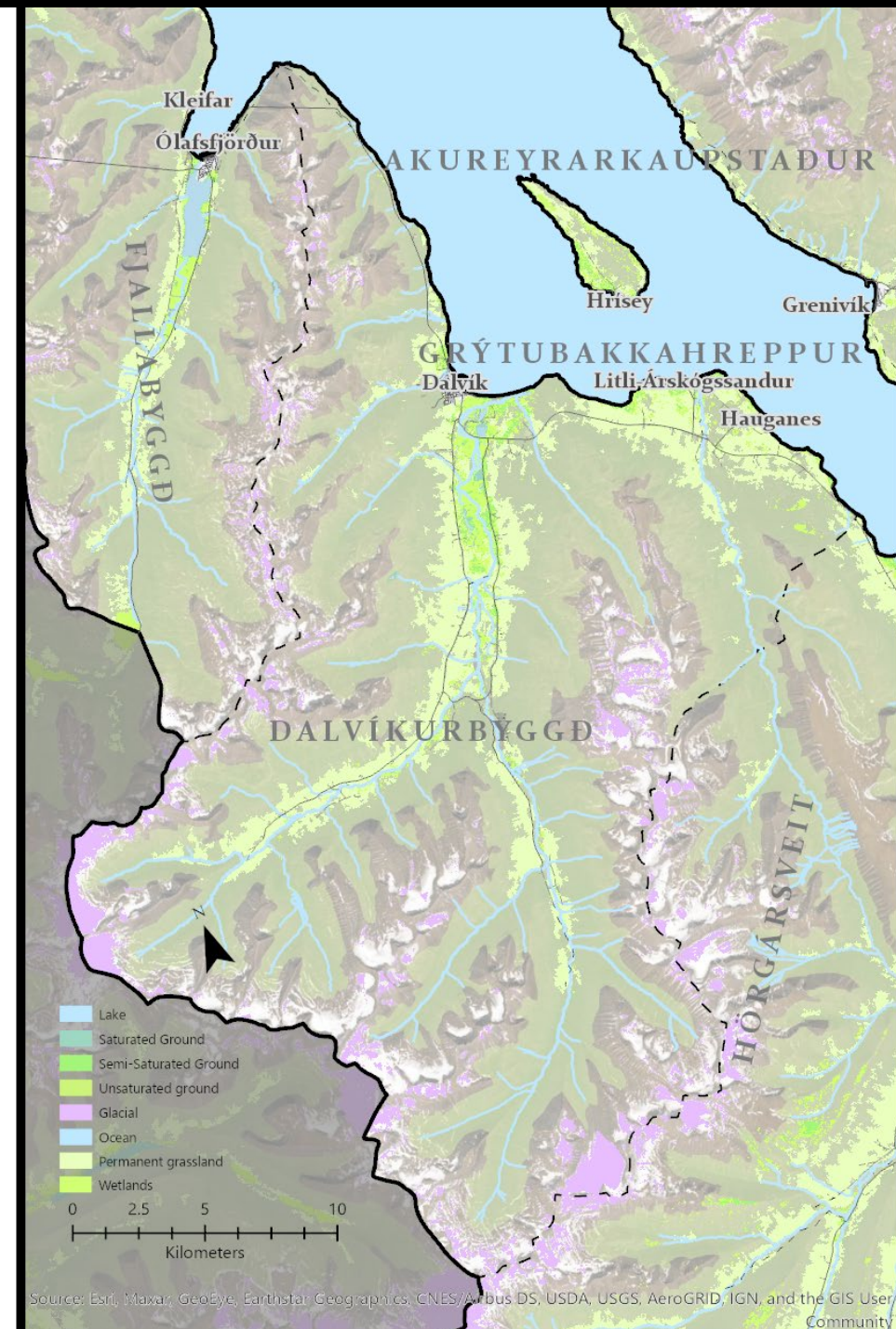
How can social-ecological adaptations inclusively bolster capacities?

Michelle Ritchie / michelle.ritchie@uga.edu / tiny.cc/geogritchie

Assistant Professor, Institute for Disaster Management
Department of Health Policy & Management, University of Georgia

Ph.D. Candidate in Geography and Climate Science (Dual)
Department of Geography, Penn State University

Arctic Research Collaboration Workshop / April 15th, 2021



3 concepts related to this topic that are important to know based on my discipline, perspective, and experience:

1. Human-environment geography and nature-society interactions
2. Sense of place
3. Modeling space-time distribution

Michelle Ritchie / michelle.ritchie@uga.edu / tiny.cc/geogritchie

Assistant Professor, Institute for Disaster Management, UGA
Ph.D. Candidate in Geography and Climate Science, Penn State
Arctic Research Collaboration Workshop / April 15th, 2021

