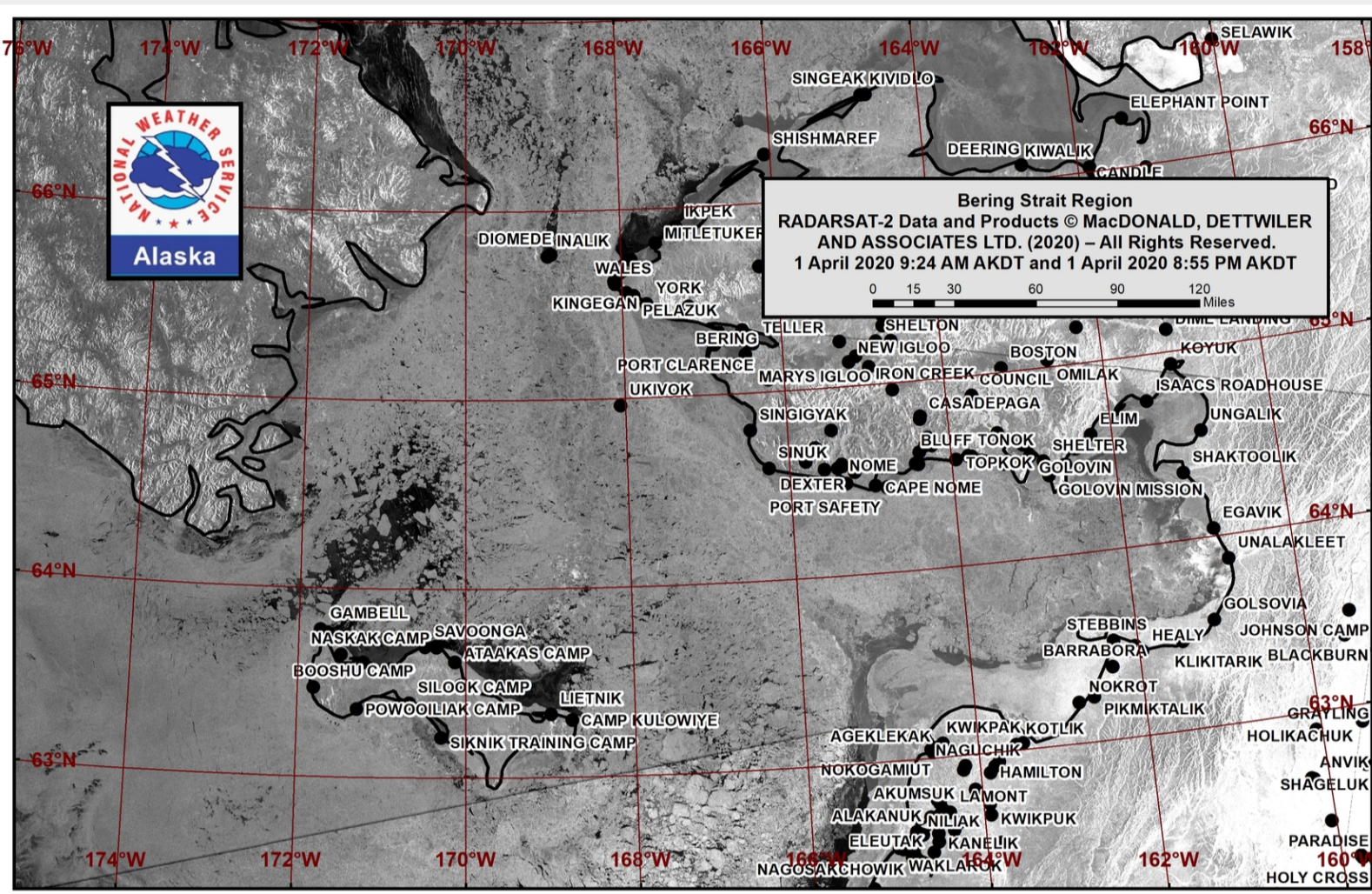


SEA ICE FOR WALRUS OUTLOOK

SIWO 2020

SEASON OVERVIEW

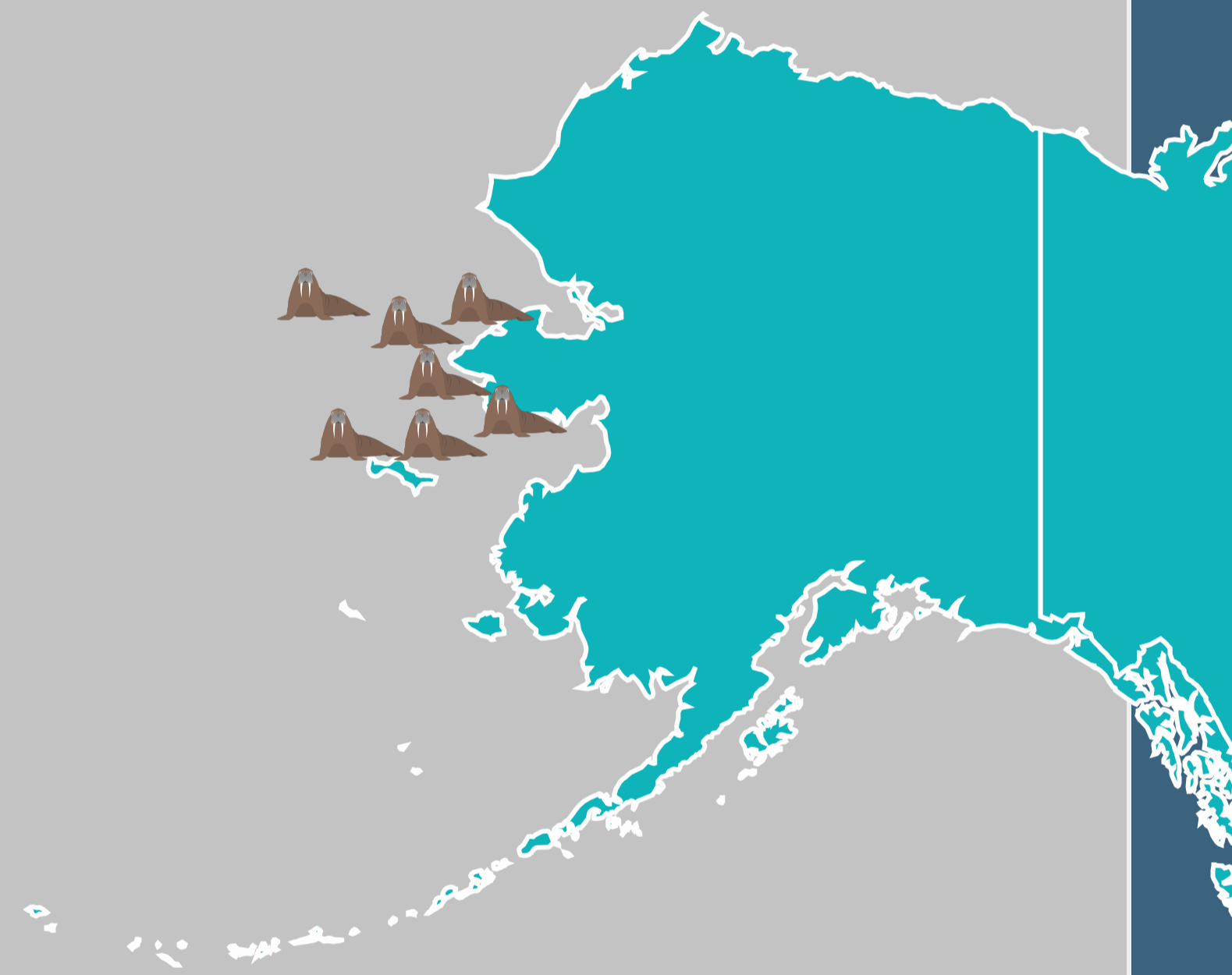


Satellite image of the ice-covered Bering Strait on 1 April 2020. Image credit: National Weather Service Alaska Sea Ice Program.

The 2020 SIWO season began with greater ice extent than observed during the past several years in the region. Many Bering Strait communities were able to harvest sufficient walrus for subsistence. However, some communities also experienced ice conditions that were dangerous for travel. Please view our webpage to read full reports at www.arcus.org/siwo.

LOCAL OBSERVERS

- Shishmaref - Curtis E. Nayokpuk
- Diomede - Eeleengayouq Ozenna
- Wales - Robert Tokeinna, Jr.
- Brevig Mission - Marcus Barr
- Nome - Frank (Boogles) Johnson, II
- Gambell - Clarence Irrigoo, Jr.
- Savoonga - Aqef Waghiyi



SEASON SUMMARY



Walrus resting on ice near Gambell in mid-May. Photo by Clarence Irrigoo, Jr.

12

weekly
outlooks

69

local
observations

1344

Facebook
followers

41

Alaskan
communities
engaged

MORE INFO

SIWO is managed by the Arctic Research Consortium of the U.S. and produced in partnership with the National Weather Service, Eskimo Walrus Commission, University of Alaska Fairbanks, and Local Observers. Support for SIWO is provided by the National Science Foundation's Division of Arctic Sciences (PLR-1928794).

More information: www.arcus.org/siwo

Follow us on Facebook: www.facebook.com/seaiceforwalrus

