

TOOLIK FIELD STATION
The Second 20 Years



*Recommendations on the Science Mission
and the Development of Toolik Field Station*

Front Cover: *Toolik Lake* by David Mollet, 36" x 48", oil on canvas, 1994.

Mollet's painting was commissioned by the Institute of Arctic Biology, University of Alaska Fairbanks, for the Artist in Residence Program. The painting shows the Toolik Field Station and includes two new field laboratories funded by the National Science Foundation. The laboratories were dedicated in August 1994 at a formal ceremony attended by Neal Lane, Director of the National Science Foundation, Principal Investigators from various universities, and representatives of the Institute of Arctic Biology, the University of Alaska, and the Arctic Research Consortium of the United States.

TOOLIK FIELD STATION: The Second 20 Years

Recommendations on the Development of Toolik Field Station

September 1996



Arctic Research Consortium of the United States (ARCUS)
600 University Avenue, Suite 1
Fairbanks, Alaska 99709
Phone: 907/474-1600
Fax: 907/474-1604
E-mail: arcus@polarnet.com
World-Wide Web: <http://arcus.polarnet.com>

This report was published by ARCUS with funding provided by the National Science Foundation under Cooperative Agreement OPP-9404321. The opinions, findings, conclusions, and recommendations contained in this document do not necessarily reflect the views of NSF.

Table of Contents

Foreword	v
Executive Summary	1
Science Mission	
Facilities Improvements	
Management Structure	
Toolik Field Station Funding Plan	
Toolik Field Station: Planning for The Second 20 Years	4
Toolik Field Station in Context	6
Trends in Arctic Research	6
Overview of the Station	7
Science Mission	8
Facilities Development	10
History of Facilities	10
Planned Facilities Development	10
General-Use Facilities	11
Conference room	
Communications	
Kitchen and Dining	
Heliport	
Multi-Purpose Workspace	
Research Facilities	12
Electric Power	
Winter Access	
Laboratory Work Space	
Living Facilities	13
Accommodations	
Family Housing	
Toilets	
Sanitation	
Waste Management	
Station Management	14
Facilities Management	15
Research Management	15
Station Funding	16
Summary and Priorities	17
Appendices	
Toolik Field Station Users, 1988-1996	
Developing Community Contacts	
Upgrade Priorities	
Diagram of Toolik Field Station	
List of Contributors, Reviewers, and Workshop Participants	
List of Toolik-Based Publications and Theses	
Contact Information for Toolik Field Station	

Foreword

This report is the product of a broad survey of the arctic research community and of those affected by arctic research activities. The main body of the report was written at a workshop held in February 1995 at the Bodega Marine Laboratory and attended by scientists, experts in the development and logistical support of remote field research stations, and managers of Toolik Field Station (TFS) and adjoining lands. Following the workshop, the report was reviewed by members of the arctic community.

The research community, wanting to ensure that excellent science continues to be conducted in the arctic, and specifically at TFS, initiated the planning process leading to these recommendations. In the summer of 1991, during the Arctic LTER site review sponsored by the National Science Foundation (NSF) Division of Environmental Biology, researchers urged NSF to upgrade research facilities at TFS. In 1992, TFS was identified as one of the key sites for the intensive process studies and observations planned for the U.S. Arctic System Science Program. NSF initiated a series of planning meetings and discussions with the research community, with the goal of preparing a detailed assessment of current and future needs at TFS.

The Institute of Arctic Biology at the University of Alaska Fairbanks, the managers of TFS, began developing a long-term plan for TFS. The TFS Steering Committee identified the need for a new science mission statement, a facilities plan, and a management plan. In 1992, the Institute asked the Arctic Research Consortium of the United States (ARCUS), as an organization representative of the arctic science community, to provide coordination and advice on the formulation of the planning documents. NSF subsequently asked ARCUS to conduct a community workshop and prepare recommendations looking at least ten years into the future. I accepted the invitation to chair the workshop and guide the development of these recommendations.

I would like to extend appreciation to the organizing committee and to workshop participants who added their perspectives to this report. Gus Shaver, Josh Schimel, and Anne Hershey prepared the first post-workshop draft of the report. Gus and Josh deserve special mention for the many hours spent working on subsequent drafts. I also thank reviewers for the many thoughtful comments that resulted in substantial improvements to earlier drafts. Various members of the arctic research community contributed photographs. The Institute of Arctic Biology provided information for figures and tables. This report owes much to ARCUS for its development and production. The exceptional support provided by Wendy Warnick, Kristjan Bregendahl, and the other staff at ARCUS was essential to its completion.

Finally, on behalf of the arctic scientific community, I thank the Office of Polar Programs at NSF for financial support and for the opportunity given to participate actively in the planning process.

Dr. Robert J. Naiman
University of Washington



Sarah Hobbie near her research site at Toolik Field Station. (Photo by Terry Chapin)

Executive Summary

Toolik Field Station (TFS) has developed over the past 20 years into a premier, internationally important site for field research in the Arctic. TFS is located on the shores of Toolik Lake, in the northern foothills of the Brooks Range, Alaska, and is accessible by an all-weather road, the Dalton Highway (see Figure 1). TFS is owned and operated by the Institute of Arctic Biology (IAB) at the University of Alaska Fairbanks. Since 1975, research at TFS has focused on the environmental and basic ecology of tundra and freshwater ecosystems and their responses to climate change and disturbance. By any standards, this research has been exceptionally productive and has attracted both national and international attention. Most researchers come from outside Alaska, including 39 states and 25 foreign countries (see partial list in Appendix 1, TFS Users).

In this report, the scientific mission and goals of TFS for the next 20 years are defined and the needs for improvement of facilities, management, and funding are described. The main body of the report was written at a workshop held 16-17 February 1995, at the Bodega Marine Laboratory in Bodega Bay, California, and attended by 35 arctic scientists, logistics experts, land managers, and representatives of the indigenous people of Alaska. Comments and suggestions were then solicited from other members of the arctic community. This report is thus the product of a broad survey of the arctic research community and of those affected by arctic research activities.

A review of the mission, goals, and needs of TFS is both timely and important, for two principal reasons:

- Over the past 20 years the growth of TFS has been rapid but driven largely by the short-term needs of individual projects and the immediate availability of funds.
- The needs of arctic research are changing, and TFS is ideally situated to play a major role in the future development of this research.

Improvements and additions to TFS have been made primarily on an ad hoc basis, as demand increased and small increments of funding became available. As a result, many of the TFS facilities were not designed for long-term use. Many needed improvements have not been made due to a lack of adequate planning and lack of a stable funding source. At the same time, both individual scientists and the federal funding agencies that support them have made long-term commitments to research based at Toolik Lake (e.g., the National Science Foundation's [NSF] Long-Term Ecological Research [LTER] and Arctic System Science [ARCSS] programs), but the logistic needs for support of these existing commitments have not been integrated into long-term plans for TFS.

To maintain its current role in the future development of arctic research, TFS must first upgrade and then expand its year-round capabilities for support of integrated, multidisciplinary research programs as well as research by individual investigators. Future needs include supporting research at large spatial scales involving regional studies and interactions with the regional and global atmosphere and climate. Eventually this could lead to development of an educational and training capability in addition to the dominant research activities. Overall, the capacity of the laboratory and living facilities needs to increase by about 50% over the next 10-20 years, incorporating these qualitative improvements. In all of its activities, TFS needs to increase its commitment to involvement of the indigenous people of Alaska.

To meet these needs and to accommodate change and growth in the use of TFS, the following *Science Mission Statement* for Toolik Field Station was adopted:

The mission of Toolik Field Station is to support field research and education that will lead to greater understanding of the arctic region and its relationship to the global environment.

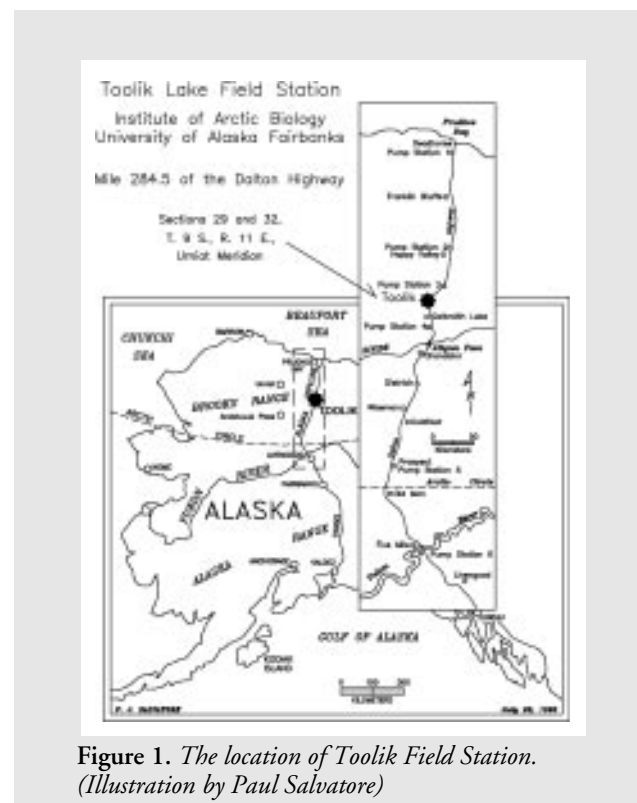


Figure 1. The location of Toolik Field Station. (Illustration by Paul Salvatore)

To complete its mission, TFS must:

- provide modern, general-use laboratory space with electric power, sufficient computer and network capacity, and telecommunications facilities. Winter facilities should be available for limited use.
- provide efficient and flexible housing, food, meeting, and support services for scientists and students at reasonable rates.
- work with the owners and neighbors of the surrounding land (BLM and the North Slope Borough) to develop plans for minimizing impacts of the research itself, and avoiding conflicts among researchers, while retaining some areas in undisturbed condition.
- facilitate research at mobile satellite field camps by serving as a scientific support center.
- provide access to information about TFS, its environs, and the North Slope through the Internet, publications, archives, long-term data sets, and biological reference collections.
- encourage the application of research results by enhancing communications with state and federal agencies, private interest groups, and the local communities.
- involve indigenous peoples in research and education.



Jon Holmgren, in December 1994, cutting a trench in a large snow drift at Imnavait Creek to expose the snow stratigraphy and to sample for thermal conductivity measurements and density. There is an increasing need for winter access to the TFS area and for winterized living facilities for researchers. (Photo by Matthew Sturm)

Specific recommendations for achieving the goals of the *Science Mission Statement* include:

- Improvements to and expansion of the TFS facilities,
- changes in the TFS management structure, and
- changes in the TFS funding structure.

Facilities Improvements

Improvements to existing facilities at TFS are the greatest immediate need. Overall expansion of the camp should proceed cautiously and in phase with expected research needs; many improvements could be implemented now with appropriate funding. Two immediate priorities identified at the workshop were (1) improvements to electrical, water, waste treatment, and communications facilities to meet both existing demands and codes, and (2) construction of a new, multifunctional meeting room.

NSF and IAB have already begun responding to priority needs identified during preparation of this report. Upgrades initiated include improved communications, a storage facility, laboratory furniture, boardwalks for access to research sites, and a separate multifunctional meeting room. Planning for electrical, water, and waste-handling upgrades has been funded. Neither the communications upgrades nor the meeting room fully address the recommendations outlined in this report, however.

The highest remaining priorities are (1) completing improvements to communications facilities and the multifunctional meeting room; (2) improving the fresh-water supply and treatment system; (3) developing a better, less expensive method of greywater disposal; (4) upgrading the electrical system, including generator housing; and (5) providing improved housing for investigators, including a winterized 10-person living unit and a 40-person residence unit. Expanded housing will require a less costly, higher capacity method of sewage disposal or on-site treatment. These high-priority improvements will cost approximately \$3 million.

Once immediate needs for improved facilities are met, recommendations include expansion of existing capabilities to support additional activities and people, along with continued improvements and upgrades to better support current usage levels. High-priority needs include improvements to helicopter landing and refueling facilities, and expansion or replacement of the existing kitchen and food preparation areas. The cost of these high-priority upgrades is estimated at \$500,000-850,000.

General improvements recommended include construction of a new washing facility, a workshop, and family housing, at an estimated combined cost of \$225,000-400,000. Longer term needs include ongoing replacement of laboratories and housing with new facilities.

Management Structure

The current management structure is generally appropriate for the future use and development at TFS. Several recommendations for more effective use of the management structure emerged from workshop discussions. Lack of funds for meetings and for support of managers' salaries has to some extent hindered management capability. High-priority recommendations include annual meetings of the existing Science Users Advisory Group (SUAG). The SUAG should also communicate regularly with the existing TFS Steering Committee. Other recommendations are:

- the formation of a Strategic Advisory Panel composed of representatives of scientific users, the local community, government, and industry,
- the appointment of a salaried, full- or part-time Scientific Director,
- coordination of the use by researchers of the Toolik Lake Research Natural Area and other local field sites, and
- increased communication and collaboration with agencies such as the Bureau of Land Management (BLM, the landowners) and NSF.

The development of linkages and collaborations with research stations elsewhere in the Arctic presents an important future opportunity for management, scientists, and local community members.

Toolik Field Station Funding Plan

Nearly 100% of the costs of running TFS are currently borne directly by research grants. As a result, research at TFS appears expensive to funding agencies and reviewers relative to research done at other sites. A high priority is the development and implementation of a mixed funding plan involving block funding for the fixed costs of running the Station and for improvements, combined with user charges that cover the incremental costs associated with daily station use. Long-term planning and budgeting is difficult when revenues are tied directly to daily use, and that use depends almost entirely on the funding of individual research grants with three-to-five-year funding periods. A funding plan under which long-term improvements can be better addressed and that separates logistics from the science costs of proposals will enhance both TFS operations and research conducted there.



Sarah Hobbie, Margaret Torn, and Chris Lund weed experimental plots to examine plant competitive relations. Coordination of the use of the Toolik Lake Research Natural Area and other local field sites by researchers is an increasingly important management responsibility. (Photo courtesy of Sarah Hobbie)

Toolik Field Station: Planning for The Second 20 Years

Toolik Field Station (TFS), operated by the Institute of Arctic Biology (IAB) of the University of Alaska Fairbanks (UAF), has served as a base for field research in northern Alaska since 1975. Over the past 20 years, research done in the landscape in and around Toolik Lake has attracted worldwide attention and scientific collaborations. The area has become one of the most thoroughly studied in the Arctic. This report defines the scientific mission and goals of TFS in order to develop the best possible plans for operation and improvement of TFS over the next 20 years.

This report results from a broad survey of the arctic research community and of those affected by arctic research activities. The main body of the report was written at a workshop held at the Bodega Marine Laboratory in Bodega Bay, California, 16-17 February 1995. Representatives of three main groups of people attended: scientists, including current users of TFS and researchers from disciplines that have not been, but could be, active at Toolik; experts in the development and logistical support of remote field research stations; and managers of TFS and adjoining lands, including UAF, the Alaska North Slope Borough, and

the Bureau of Land Management. Subsequent to the workshop, the report was reviewed by members of the arctic community.

Several key points formed the basis for developing the mission statement and goals for the next 20 years:

- TFS has become nationally and internationally recognized as a premier arctic research station.
- Future development of TFS must be accomplished in the context of national and international arctic science goals.
- Development of TFS must include the capacity to support additional types of research not currently conducted at the station.
- Improvements to TFS must be accomplished in a manner that strengthens, rather than diminishes, the long-term financial viability and stability of TFS and its established research programs.
- The future development of TFS must be community-oriented, both with respect to the scientific community and to the indigenous Inuit community of the North Slope of Alaska (see Appendix 2, Developing Community Contacts).



A view of Toolik Field Station looking north. In the foreground are open-top warming chambers and a snow fence in moist tussock tundra, part of the U.S. International Tundra Experiment (see page 8). The snow fence causes large drifts to accumulate during the winter and persist long after normal snow accumulation has disappeared. (Photo by Andy Parsons)

Specific questions guiding the discussions at the workshop included:

- What are the broad research areas likely to be addressed at TFS?
- What is the role of TFS within the scope of the national and international arctic research agenda?
- What types of research will be undertaken (observational, experimental, etc.)?
- What are the facility requirements to support this research?
- How would implementation of these requirements affect TFS?
- What priorities can be established in developing TFS?
- How might these efforts be funded and sustained?

Careful consideration of all of these questions is essential to ensure that TFS remains at the forefront of arctic research.



Steven Oberbauer calibrating a Li-Cor portable photosynthesis system at Toolik Field Station. (Photo by Mike Åbels)

Organizations Represented at the Workshop

Alaska North Slope Borough

- Department of Energy Management
- Mayor's Office

Arctic Research Consortium of the United States

Cold Regions Research and Engineering Laboratory

Colorado State University

- Rangeland Ecosystem Science Department

Marine Biological Laboratory

- The Ecosystems Center

National Science Foundation

- Office of Polar Programs

Organization for Tropical Studies

Pacific Northwest Laboratory

San Diego State University

- Global Change Research Group

Sandia National Laboratories

- Environmental Characterization and Monitoring Systems Department

State University of New York–Albany

- Atmospheric Science Research Center

United States Department of the Interior

- Bureau of Land Management

United States Geological Survey

- Water Resources Division

University of Alaska–Fairbanks

- Institute of Arctic Biology
- Water Research Center
- Alaska Quaternary Center

University of California–Berkeley

- Department of Integrative Biology

University of California–Santa Barbara

- Department of Ecology, Evolution and Marine Biology

University of Colorado

- Institute of Arctic and Alpine Research

University of Minnesota–Duluth

- Department of Biology

University of Nebraska–Lincoln

- Polar Ice Coring Office
- Snow and Ice Research Group

University of Toronto

- Department of Botany

University of Washington

- College of Forest Resources
- Department of Zoology
- Center for Streamside Studies

Toolik Field Station in Context

Trends in Arctic Research

Terrestrial and aquatic research in the Arctic over the last several decades has focused on understanding the functioning of a unique environment and landscape and on exploring the adaptations and interactions of plants and animals in a harsh environment. Research in these areas has significantly increased our understanding of the Arctic, and paid dividends by increasing our understanding of basic biology, climatology, hydrology, and ecology. In many ways, arctic ecosystems are particularly appropriate model systems for basic environmental research because of their low species diversity, the low stature of the vegetation, and the strong climatic and microclimatic gradients. Scientists working at Toolik Field Station have been among the leaders, for example, in the use of whole-ecosystem manipulations to understand how resource limitation (e.g., light, water, and nutrients) interacts with community composition (plants, herbivores, carnivores) to determine overall ecosystem structure and function. Many of these experiments would be much more difficult or even impossible to perform in other parts of the world.

The key event in the development of TFS was the construction of the Alyeska oil pipeline and the Haul Road (later named the Dalton Highway) in 1974-1976. Before that time, access to interior regions of the North Slope was limited by the lack of roads and the small number of widely scattered locations where aircraft (mostly fixed-wing) could land, take off, and be fueled or serviced. Completion of the Dalton Highway in September 1974 opened up an environmental transect across the heart of northern Alaska. Toolik Lake and the Upper Kuparuk River lie near the center of this transect, and ecologists and other environmental scientists were quick to exploit the opportunities for new research in the surrounding area.

In addition to its ideal location and the access to diverse sites provided by the Dalton Highway, a major attraction of TFS as a field site is the large background of research done there beginning in 1975. The more that is known about a specific site, the easier it is to interpret new, specific information and its relative importance in the context of the larger ecosystem. For this reason, intensive descriptive and experimental studies of the tundra, lakes, and streams in the area surrounding TFS are expected to continue and remain an important consideration in developing future plans.

Integrated research projects have been based at TFS from its earliest days, starting with the NSF-funded Research on Arctic Tundra Environments (RATE) project from 1975-1977. A series of aquatic research projects supported by the NSF Office of Polar Programs

(NSF-OPP) continued through the mid-1980s. These included the Arctic Lake Process Study (ALPS) and Tests of Arctic Predictions (TAPS). Other large, integrated research projects based at TFS include the Response, Resistance, Resilience, and Recovery from Disturbance (R4D) program, funded by the Department of Energy (DOE), and the ongoing LTER program funded by NSF.

The current ARCSS Land/Atmosphere/Ice Interactions (LAI) program advances integration by linking biological, hydrological, and atmospheric dynamics. Terrestrial studies are also linking with marine studies. For example, the DOE Atmospheric Radiation Measurement (ARM) program is examining radiation and cloud dynamics over the North Slope of Alaska and the adjacent Arctic Ocean, which in turn links with the Surface Heat Budget of the Arctic Ocean (SHEBA), a part of the ARCSS Ocean/Atmosphere/Ice Interactions (OAI) program.

Current research in the Arctic, at TFS and elsewhere, increasingly depends upon an integrated, interdisciplinary approach to regional and global problems. Major research questions now include the role of the Arctic in:

- Global climate, both through the snow/ice-albedo effects on the energy budget and through carbon dioxide (CO₂) and methane (CH₄) dynamics,
- terrestrial ecosystem productivity and the role of arctic ecosystems in global carbon and nutrient storage,
- aquatic ecosystem productivity, food web controls, and the impact of global warming and other perturbations on these ecosystem processes,
- river runoff and nutrients, and their effects on productivity and circulation of the Arctic Ocean and the global ocean system, and
- herbivore and plant community dynamics, especially with respect to changes in species distributions and abundance with changes in climate.

Current research involves geographic as well as disciplinary integration, as studies target process dynamics at the landscape and regional scales to evaluate the role of the Arctic in the larger Earth System.

Current and future arctic research depends on TFS as a site for intensive, localized process and manipulation studies. Future studies will also need at least one high-quality base providing scientific and logistic support for research spread across the North Slope of Alaska. Since 1975, TFS has been a centerpiece and springboard for arctic research in Alaska. It is well-positioned, therefore, to respond to the needs of a maturing, interdisciplinary scientific community, and to remain an instrumental base for arctic research well into the twenty-first century.

Overview of the Station

Toolik Field Station is a unique and valuable center for arctic research because of its history of and investment in process-oriented research that includes long-term monitoring of climate, hydrology, biodiversity, and physiological and ecological processes, as well as manipulations on a whole-ecosystem scale. Researchers from 39 states and 25 foreign countries have worked at TFS over the past 20 years (see partial list in Appendix 1, TFS Users). Over 300 scientific papers and two books have been written based on research done there (see Appendix 6, List of Toolik-Based Publications and Theses). The value of this research was recognized recently by the BLM when the entire watershed of Toolik Lake and the nearby headwaters of the Kuparuk River were named a Research Natural Area.

TFS is now a critical component of several ongoing national and international research programs including the LTER program, the International Tundra Experiment (ITEX), the Global Change in Terrestrial Ecosystems (GCTE) transect study, and the ARCSS Program. Its location on the Dalton Highway between Fairbanks and Prudhoe Bay makes TFS part of a dramatic and easily accessible environmental gradient from the interior of Alaska to the northern coastal plain. The foothills region of the North Slope, where TFS is located, contains a variety of different-aged landscape surfaces in a relatively small area that are uniquely suited for studying the role of landscape variation in controlling ecosystem processes.

At present, the facilities at TFS are adequate for the support of about 40 researchers through the summer season and up to 70-80 for short periods. The physical plant consists of 20 prefabricated, mobile trailer units adapted for use as laboratories and dormitories. One semi-permanent building now serves as a dining hall, kitchen, and communications facility. One new laboratory is outfitted for sustained operation during the winter.

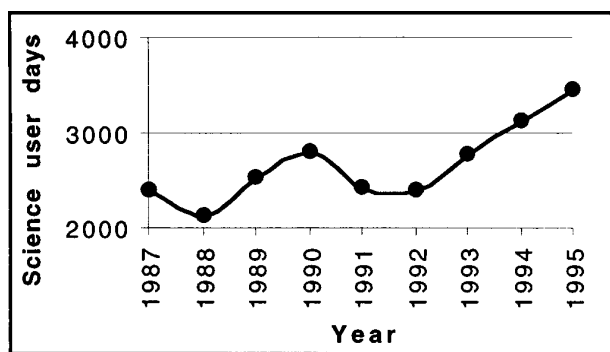


Figure 2. Science user days at Toolik Field Station, 1987-1995. Information provided by Mike Abels.

With the exception of three new laboratory buildings added in 1994, all of these structures were purchased used and have served well beyond their initial, expected lifetimes. Most are worn out. (See Appendix 4, Figure 5, Diagram of Toolik Field Station.)

The continued success of the research programs based at TFS is placing an increasing strain on the Station's facilities (see Figure 2). Many of these programs, such as LTER and ITEX, have made long-term commitments to research in the surrounding tundra, lakes, and streams. Given the ideal location, plus the expanding background of knowledge about the area, there is little doubt that demand for use of TFS facilities will continue to grow in the future.

Researchers at TFS have shown that they can be successful at obtaining support for research based there, but comprehensive long-term planning and funding for TFS itself has always lagged behind the growth of research programs. The expansion of TFS since 1975 has been driven primarily by short-term needs of researchers and by occasional availability of small increments of funding from various sources, primarily NSF and DOE. As the research based at TFS becomes more long-term by design (e.g., the NSF-funded LTER project, in operation at TFS since 1987), there is a corresponding need to design the Station's facilities to meet its expected long-term needs.

The productivity, impact, and long-term nature of current research at TFS indicates clearly that the Station will remain an essential resource for arctic research in the future, but that the facilities must be modernized and upgraded to meet these existing commitments. New directions in arctic research will require additional capabilities, and TFS is well-situated to provide them. Research based at TFS in the future will likely expand from the current areas to include such important issues as:

- Sustainability of arctic subsistence economies in response to anthropogenic environmental change,
- controls of biodiversity and consequences of biodiversity for ecosystem function,
- the role of Quaternary and modern hydrologic and periglacial processes in shaping the arctic landscape,
- questions of plant and animal environmental physiology, especially in relation to long-term ecosystem studies,
- controls over local and regional climate and how they regulate ecological processes, and
- long-term monitoring of changes in biota and environment.

As the TFS facilities are improved, research on these topics could be conducted during a greater portion of the year, further enhancing long-term studies.

Science Mission

The mission of Toolik Field Station is to support field research and education that will lead to greater understanding of the arctic region and its relationship to the global environment.

The TFS science mission will be accomplished most effectively by providing access to field research sites, living accommodations, and laboratory facilities, and by protecting core research areas. If this science mission is to be successful, TFS must:

- Provide modern, general-use laboratory space with electric power, sufficient computer and network capacity, and telecommunications facilities. Winter facilities should be available for limited use.
- Provide efficient and flexible housing, food, meeting, and support services for scientists and students at reasonable rates.
- Work with the owners and neighbors of the surrounding land (BLM and the North Slope Borough) to develop plans for minimizing impacts of the research itself, and avoiding conflicts among researchers, while retaining some areas in undisturbed condition.
- Facilitate research at mobile satellite field camps by serving as a scientific support center.
- Provide access to information about TFS, its environs, and the North Slope in general through the Internet, publications, archives, long-term data sets, and biological reference collections.
- Encourage increased understanding and the application of research results by enhancing communications with state and federal agencies, private interest groups, and the local communities.
- Involve indigenous peoples in planning and implementing research programs.

Meeting these goals will require coordinated effort with respect to Station facilities development, management, and funding. In the following sections of this report, each of these topics is discussed individually, with specific recommendations for improvements. These improvements should be phased in over time, as growth in the Station's capabilities should anticipate, but not exceed, growth in user demand. Future development must be flexible, adjusting to emerging priorities and new directions in arctic research. Immediate priorities are explicitly stated in each section, with longer term needs expressed in general terms.



Arctic LTER researchers working at a stream in the Kuparuk River drainage. TFS provides a convenient logistics base for research in the area. (Photo courtesy of Mike Abels)



George Kling measuring pH and conductivity and taking samples for dissolved gases in a small tundra stream near TFS in the summer of 1994. (Photo courtesy of Mike Abels)



Gus Shaver sampling a tussock plot near TFS. (Photo by Marty Downs)



Kaye Everett installing a weir on Innavait Creek in the summer of 1992. (Photo courtesy of Mike Abels)



Matthew Sturm digging a trench in March 1992 to examine the micro-topographic variations in the snow and to relate the snow properties to individual tussocks. In the background is a tower with a sonic sounder that recorded the snow depth hourly through the winter, indicating periods of snow accumulation and erosion. (Photo courtesy of Matthew Sturm)



Terry Chapin at TFS in August 1994 washing roots for weighing. (Photo courtesy of Sarah Hobbie)

Facilities Development

History of Facilities

TFS was initially established in 1975 to support an aquatic program designed to obtain base-line data on the North Slope and inland coastal ponds. This research was an extension of the International Biological Program (IBP) from which a number of projects were retained and known as RATE (see page 7). RATE was coordinated under a proposal funded by NSF as part of the Man and Biosphere Program (MAB), Project 6, Impact of Human Activities on Mountain and Tundra Ecosystems.

In 1975, a 16-foot travel trailer belonging to the UAF Institute of Marine Science was placed at the north end of the lake. A 10' x 50' modular unit containing a kitchen/dining area, a laboratory room, and a sleeping room was added in 1976. Researchers brought their own sleeping tents. In 1978, a new kitchen/dining unit was added and the original unit was modified into five laboratory cubicles. In 1980, a 10' x 50' laboratory unit was added. In 1982, an additional 10' x 40' laboratory unit was added, with its ultimate use designated as a hygiene/washing-up facility. Two vehicles were funded by NSF in 1978 and 1979 as part of the ALPS Program logistics. In 1981 and 1982, DOE made contributions of \$20,000 per year for field station operation. A number of small temporary wooden structures were added during these six years and used for scientific work and storage. Excluding these temporary units, there were 1,400 sq. ft. of lab space and 500 sq. ft. for food service.

In 1983, the Station was relocated to the southeast end of Toolik Lake. Thirteen surplus Transalaska Pipeline modular units were purchased used from the Alyeska Pipeline Service Company, upgrading the station to 17 units. Eight 12' x 20' Hanson Weatherport tents were acquired as in-kind support of the IV International Conference on Permafrost. The tents provide 1,920 sq. ft. of work or storage space. The 1983 upgrade was funded by a \$30,000 grant from DOE and \$7,000 of IAB overhead recovery.

In 1984, the Alaska Legislature made a special \$35,000 appropriation which was used to upgrade the wastewater collection system and kitchen. A \$10,000 award from UAF was used to upgrade the kitchen trailer in 1985. In 1986, NSF awarded \$60,000, with a \$30,000 UAF match, to upgrade TFS. A dining facility was built, connecting the dining and kitchen trailers. The added 960 sq. ft. of floor space released the dining trailer which was redesigned as the communications office to accommodate general-use computers and communication equipment.

In 1988, NSF awarded \$74,250, with a \$78,250 UAF match, for the acquisition of equipment and improvement

of facilities. An electrical cable tray distribution system was installed from the generators to each building. The generators were placed inside an Arcticpac trailer that dampens the sound and provides shelter for the equipment and a method to ship the generators to Fairbanks each winter for service. Other equipment included three snowmachines, a gas chromatograph, a wet/dry fall collector, a water filtration system, a stereo-zoom microscope, a spectrophotometer, a leaf-area meter, two balances, and a freeze dryer. Items purchased in 1994 include two weatherport tents, two Gateway 2000 486SX computers, one Apple Macintosh Centris 610 computer and printer, and an 8000 gallon generator fuel storage tank. The upgrade included a survey and improving the interior electrical systems of the existing lab trailers and kitchen.

In 1994, with support from NSF-OPP, three new laboratory buildings were added, more than doubling the available laboratory space (see Appendix 4, Figure 5, Diagram of Toolik Field Station).

Planned Facilities Development

With the exception of the new laboratories added in 1994, the physical facilities at TFS still are marginally adequate to meet existing user needs, let alone future needs at the station. Upgrade of the facilities is essential to allow TFS to serve the needs of the scientific community (see Appendix 3, Table 2, Upgrade Priorities). Issues that must be considered in developing upgrade plans include:

- Development plans should be phased and should include a 5-year, 10-year, and 20-year schedule to guide improvements. The plans must be flexible to accommodate growth and expansion of arctic research.
- Expansion of laboratory, logistic, and living facilities should be based on likely increases in user demand. Estimates developed during the workshop suggest that by the turn of the century, 65 scientists will use TFS throughout the summer and 10 scientists during winter. By the year 2005, it is estimated that there will be 80 summer users and 15 winter users.
- Expansion of the user base at TFS is partly constrained by the heavy use of field sites in the immediate vicinity of the Station. This may be avoided if the current trend toward using the Station as a base for more remote field operations continues. The facility should be flexible enough to support on-site and remote types of research.
- Laboratories, dormitories, and other facilities that are obsolete or inadequate to meet existing needs should be replaced with new facilities as soon as possible.

- Facilities must be designed so that parts of TFS can be opened or closed down separately according to demand.
- Operating costs must be kept level or reduced where possible, as cost currently limits Station use. Facilities should be designed to reduce maintenance and operating costs. Replacement of old facilities with new, higher quality facilities will reduce maintenance costs substantially.
- Improvements should reflect an environmental ethic, particularly since TFS is recognized as a premier site for arctic environmental research. Alternative energy sources and recycling of wastes should be fully explored.

General-Use Facilities

Conference room

Collaborative projects need to meet regularly at the field site. Short-term visitors (site reviewers, international visiting scientists, LTER scientists from other sites, and others) have become common. During peak season, evening meetings are an almost daily occurrence, and daytime seminars are common. The dining hall is the only space now available for meeting, and it is unavailable much of each day. Books, papers, and other materials cannot be left set up through mealtimes. TFS should:

- Provide a separate conference facility for meetings and conferences to nurture interdisciplinary research and scientific exchange. A facility meeting room should allow flexible use and be able to hold approximately 50 people.

Communications

The existing communications system at TFS (two lines for voice, fax, and data) is seriously inadequate for current use, let alone the anticipated growth. The existing system makes little use of advances in communications technology. As a high priority, TFS should:

- Provide a minimum of five lines (two data, two phone, one fax). A high-band-width digital telecommunications link is highly recommended.
- Expand computer and network support. This includes establishing a local network with Internet access for TFS laboratories and living areas.

Kitchen and Dining

The existing kitchen has been modified and expanded several times over the past 20 years, but has reached its capacity and cannot be further modified for greater efficiency. Food storage capacity is extremely limited and inefficient. It is recommended that TFS:

- Replace the existing kitchen/food storage facility with an expanded facility including separate food preparation and food storage areas.

Heliport

Use of helicopters has increased greatly in the last few years. Helicopters are now used daily during peak season.

- A heliport should be built at TFS that allows safe landings and takeoffs. Fuel storage, fuel containment, and a facility for safe refueling should be included.



Researchers planning the day's work; a typical scene in the area between the dining hall and wash-up trailer. (Photo by Mike Abels)

Multi-Purpose Workspace

Storage space is extremely limited at TFS. Winter security of stored equipment is a particular concern. As part of planned improvements, TFS should:

- Provide a multi-purpose building for vehicle and equipment storage and maintenance, for use as a workshop, and for general storage. The building should be heated and accessible for winter use.
- Construct a shipping/receiving space for efficient loading and unloading of supplies and equipment for distribution to and from laboratories, dormitories, and kitchen. This system should include indoor, short-term storage space.
- Consider installation of an alarm system routed to the Alaska State Troopers, contingent on their agreement.

Table 1. Permanent Facilities at TFS (in sq. ft.)

Facility	1983	1994	1995
Laboratory	2,500	2,700	6,390
Stable Isotope Laboratory	—	160	160
Kitchen	500	500	500
Dining	240	960	960
Manager/First Aid	300	300	300
Residence	2,500	3,000	3,000
Winter Storage	400	400	400
Workshop	400	400	400
Office/Communications	—	240	240
Total, sq. ft.	7,720	9,540	13,230

Research Facilities

Electric Power

The current electrical system at TFS does not meet safety codes in several respects. When TFS is full, the Station's generators are running at capacity most of the time. Increasingly, experiments conducted at TFS require electric power in the field, but many measurements (e.g., micrometeorological gas flux measurements) must be uncontaminated by fumes associated with Station activities or generators. TFS should:

- Upgrade the electrical supply system and generators to meet existing safety codes and anticipated demand.
- Provide electric power at some remote sites. Long lines connected to a station generator could meet this need, provided that the total power supply is sufficient.
- Evaluate the usefulness of solar cell arrays for the provision of some electrical needs.

Winter Access

The Arctic experiences winter conditions approximately 75% of the year, but important atmospheric, hydrologic, and biological processes that occur during this time have been only partially investigated and are not fully appreciated. Some winter researchers use established facilities at Prudhoe Bay or temporary camps elsewhere and commute to a variety of sites, rather than using the Toolik facility. This arrangement hinders important research links to the summer activities at TFS. Although excellent, winterized laboratory space was added in 1994, the current facilities for wintertime sleeping, eating, and washing at TFS are minimal and inadequate for sustained use.

TFS must provide adequate winter support with a modular subunit to facilitate winter access to TFS for approximately ten people. Sleeping facilities, an eating and washing area, toilets, and work space are needed. The unit should be designed for easy shutdown when not in use.

Laboratory Work Space

Current laboratory space consists of two new 24' x 60' modular laboratories, one new 12' x 50' module, and five older 10' x 50' modules. The new labs provide high-quality wet lab space with individual instrument rooms, chem-resin benches, fume hoods, and running water in at least one module. The older units have been converted to dry labs and office space. The total amount of work space is adequate for the current user population of 40-50 people during peak season and could likely accommodate a moderate increase in users. The older units, however, are over 25 years old and in poor condition. They present an increasing maintenance problem.

- The long-term plan should include replacing the older laboratory units, as they wear out, with new facilities. There should be no net loss of work space from the existing levels.



One of the new 24' x 60' modular laboratories funded by NSF in 1994. (Photo by Mike Abels)



Approximately one-third of TFS users now sleep in personal tents. This photo was taken early in the season, before peak use at TFS. (Photo by David Witt)

Living Facilities

Accommodations

The existing sleeping units will hold 40 people but are of low quality and are insufficient to accommodate current users of TFS. Approximately one-third of users now sleep in personal tents. While many users prefer this option, the space available for tents is limited and could easily become overused. An increase in the number of regular users of the station will require additional sleeping accommodations.

- TFS should provide high-quality living facilities for a minimum of 40 people as soon as possible.
- In the longer term, the existing dorm facilities should be replaced by a new residence unit or units, bringing the Station capacity to approximately 80 people.

Family Housing

TFS should make use of the Station's facilities possible for researchers who are accompanied by their families, including children. The availability of family facilities would provide broader and more equitable access to research opportunities, especially for researchers in mid-career. These needs could best be met by:

- providing family housing units that can also serve other purposes when no families are present at TFS.

Toilets

TFS is currently served by an outhouse facility with three seats. This capacity is inadequate for current users in both quality and quantity. TFS should:

- Provide additional toilet facilities, preferably located in or near the living quarters and in proximity to the laboratory buildings.
- In the longer term, flush toilets should be provided.

Sanitation

Existing sanitation facilities include a wash trailer equipped with one sink with hot and cold running water, one clothes washer and dryer, a single shower with inadequate control of hot and cold water, and a wood-burning sauna next to Toolik Lake. Sanitation facilities should be upgraded by:

- expanding washing and cleaning facilities, with additional facilities incorporated into new living units.

Waste Management

Although an adequate fresh water supply exists in Toolik Lake itself, wastewater management is already a major problem and expense. Greywater will increase rapidly as showers and other sources of running water are implemented. Sewage will increase with greater use of the Station and expanded housing. Toolik Lake is, however, a pristine, nutrient-poor lake, and even small nutrient inputs could significantly alter it. At present, wastewater is collected in tanks that are periodically emptied and trucked to Prudhoe Bay for disposal. The capability to handle wastewater and sewage at or near Toolik Lake must be developed. TFS should:

- develop a wastewater and sewage treatment and/or disposal plan, in conjunction with expanded and improved living quarters.
- thoroughly investigate new environmentally sensitive technologies for handling waste.
- ensure that nutrients from wastes do not enter the Toolik Lake watershed.

Station Management

TFS is managed by the Institute of Arctic Biology (IAB) of the University of Alaska Fairbanks (UAF). Policies are set by the IAB Director and Executive Officer who work with a TFS Steering Committee. The Steering Committee is composed of UAF faculty and staff members and, currently, representatives of the Bureau of Land Management (BLM) and the Arctic Research Consortium of the United States (ARCUS). Policies are carried out by a smaller Toolik Management Group. Both of these groups meet regularly throughout the year. A Science Users Advisory Group (SUAG), made up of researchers from outside UAF, provides advice on important management issues (see Figure 3).

The users of TFS agree that management by the IAB has been good, especially under the constraints of unpredictable funding and difficult-to-predict shifts in the needs of arctic research. The existing management structure works reasonably well. Some components, such as the Science Users Advisory Group, have not been fully implemented. Several changes are recommended to accomplish more effective and efficient long- and short-term planning, and to improve relationships with the local communities. The key to effective management of TFS is an interactive structure with close ties to the science users, land managers, local communities, and the general public. Specific recommendations for improving management and coordination follow.



Those present at the TFS dedication in August 1994 included representatives of the National Science Foundation, the University of Alaska Fairbanks, users of TFS, and other members and supporters of the arctic research community. From left to right, Noreen Walsh, Wendy Warnick, Joan Wadlow, Ray Cameron, Neil Sullivan, Jean James, Jerome Komisar, Josh Schimmel, Robert White, Neal Lane, Vera Alexander, Doug Kane, John Hobbie, and Patrick Webber. (Photo by Kathy Berry)

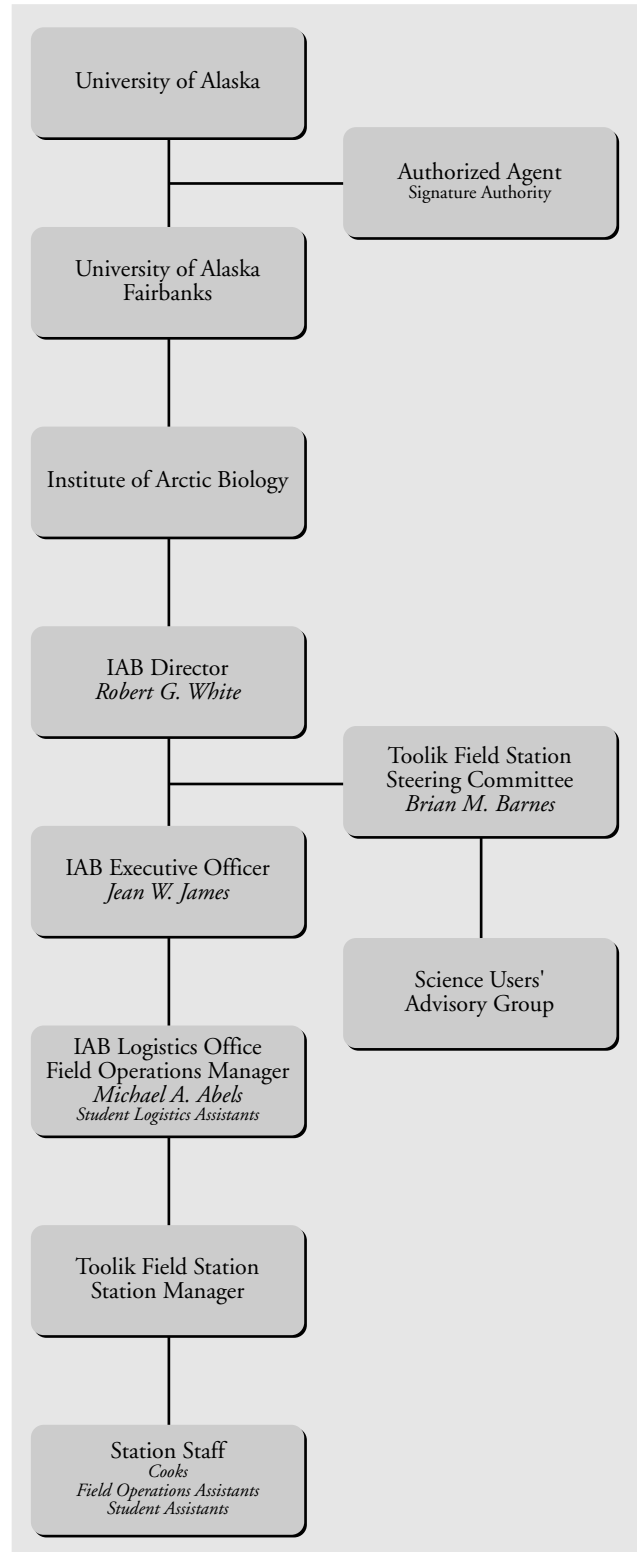


Figure 3. Current Toolik Field Station management and organization. (Figure courtesy of IAB)

Facilities Management

The Science Users Advisory Group (SUAG) is viewed as pivotal to the continued success of TFS. Organization of the SUAG should be formalized and it should take a larger role in setting policies and direction for TFS. The composition, terms of service, and meeting schedule of the SUAG should be specified in writing. In particular, the group should meet annually, and two of its members should attend key meetings of the TFS Steering Committee, such as those when user per diem charges are set. The Toolik Management Group, Steering Committee, and Science Users Advisory Group should continue to work as they are currently conceived.

A Strategic Advisory Panel should be added to the TFS management structure. The Toolik Strategic Advisory Panel should draw its members from outside the scientific user community to provide a broader policy perspective, improved communications with the Alaska North Slope community, and to develop links to the wider arctic research community. This group could help cultivate new funding sources and increased involvement of the Inuit people in projects at TFS.

TFS should hire a full- or part-time Scientific Director. This has been an effective approach to better scientific coordination taken by other major field stations. A director would be responsible for facilitating the scientific and educational missions of the station, managing a site Geographic Information System (GIS) and other databases, seeking funding for station upgrades or special maintenance, and ensuring strong public support for the facility. The Scientific Director would not set a scientific agenda nor direct individual scientists or their projects.

As the station grows there will be a need for a clear facilities policy, to clarify such issues as responsibility for removing buildings that are beyond repair, moving equipment that is needed for other research, or adjusting to the termination of funding. A formal agreement should be developed with NSF for management and ownership of NSF-provided facilities at TFS.

In the long term, TFS will develop best with community-wide involvement and commitment. The Toolik Management Group and the TFS Steering Committee should take steps to engage the financial support and oversight of those U.S. and international institutions whose researchers depend on TFS as a base for arctic research. The involvement of a coalition of geographically distributed users representing a variety of disciplines and research programs will broaden the funding base, expertise, and influence brought to bear on decisions affecting TFS development.

Research Management

The local tundra, lakes, and streams surrounding TFS are actively used by researchers and, increasingly, there are incompatible projects conducted in the same areas. Undisturbed areas including a typical range of local landforms and community types have not been set aside for future reference. The locations of sites used historically and prehistorically by Native peoples are not always known or recognized by researchers based at TFS, and it is possible that these sites may be damaged unintentionally. To limit research conflicts, to ensure availability of pristine areas for study in the future, and to avoid damage to important Native sites, the participants recommend expanding the role of TFS managers in coordinating the use of the Toolik Lake Research Natural Area and other local field sites. This must be accomplished in close collaboration with the BLM and the North Slope Borough, who are the landowners and neighbors. Several changes would improve coordination of research projects. Toolik Field Station, BLM, and the North Slope Borough together should:

- maintain a Geographic Information System (GIS) of existing, recent, historic, and prehistoric sites in the area, to facilitate development of new research, integration and collaboration with past research, and conservation of the landscape.
- identify and set aside a representative array of undisturbed areas for future reference and comparison.
- develop a zoning plan to minimize potential conflicts among research efforts, and establish a formal mechanism for resolving conflicts.

TFS should also improve communications with other arctic field stations and develop mechanisms for facilitation of cross-site studies. Such coordination may also help to stimulate useful and exciting international collaboration among arctic field stations.



Station Funding

Operating funds for TFS come principally through daily charges to users. Additional funds for facilities improvements are obtained through occasional federal grants, with matching funds from the IAB. The current funding mechanism has major drawbacks. In particular:

- Planning is difficult when revenues are tied so directly to actual use, and use is not known precisely until each summer season ends.
- High per diem costs are a source of criticism from grant proposal reviewers and can make it difficult to obtain research funds to work at TFS. The 1996 user-day charge is \$145 per day, while user fees for other remote field stations range from \$5-50 per day. For example, the Swedish Abisko facility charges \$10-15 per day, the Churchill Northern Studies Center charges \$42 (CAN) per day, and the La Selva Biological Station in Costa Rica charges \$42 per day for senior researchers. At the U.S. Antarctic research stations, per diem costs are not charged against research grants but come from a separate funding source.
- High per diem rates limit extended use by projects currently working at TFS.
- High per diem costs greatly limit student access to the station. Many projects cannot afford to support students while the students are in the early, exploratory phases of dissertation research.

A mixed funding plan including both block funding and user charges is recommended for TFS. The block funding should cover the core, fixed costs of running the station, including electricity, communications infrastructure, salaries for camp staff, administration, maintenance, and meetings of advisory groups. Associated with this would be co-payment by the individual projects to pay for the marginal costs of using the Station, such as food and waste handling. About 1/3 to 1/2 of the current total cost would be defined as marginal costs. Of the current user-day charge of \$145 per day, about \$75-95 support fixed costs and \$50-70 support marginal costs (See Figure 4).

Most funding for future Station improvements, such as the addition of new buildings, will either be provided through specific facilities grants or through direct purchase and ownership by a funding agency. In the past, agency-funded upgrades have required that UAF contribute to the cost of upgrades as well. Such a requirement can be an impediment to continued improvements because the majority of Station users are not from the University of Alaska, and the University should not be the sole organization responsible for cost-sharing. If the granting agency retains ownership of the improvements, agreements for maintenance and eventual removal of facilities must be worked out with the granting agency.

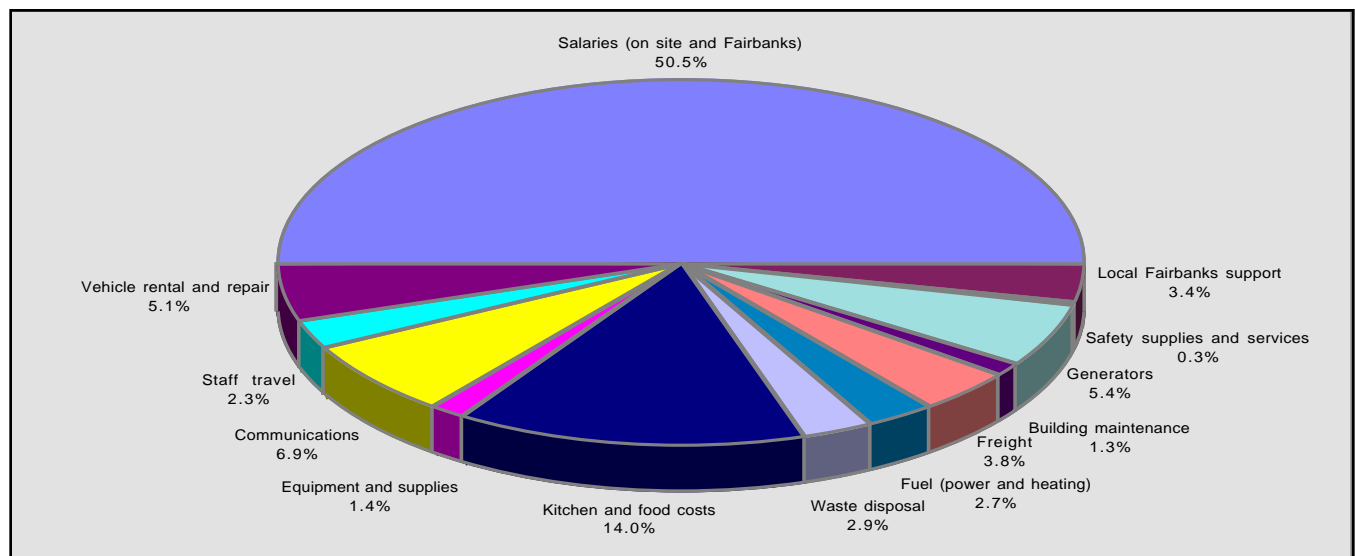


Figure 4. Breakdown of support costs, field season 1995. (Figure prepared by Mike Abels)

Summary and Priorities

Toolik Field Station is now, and will continue to be, an internationally important field station for arctic research. An upgrade and expansion of TFS facilities is well-justified, as indicated by:

- the high productivity of past research at TFS,
- the proven ability to attract researchers from throughout the United States and internationally,
- the existing commitments of both researchers and funding agencies to research based at TFS, and
- the ideal location for future integrated, regional, and global environmental research programs.

In addition to improvements to the physical facilities recommended in this report, a reorganization of the funding mechanisms of TFS is urgently needed. The existing management structure is appropriate, but could be more fully implemented and expanded to improve long-term planning, interaction with the local communities, and communications among TFS users.

The development and growth of TFS must be carefully planned and coordinated with current and future needs of the research based there. For this reason a phased, 20-year plan for improvements is needed, with clear priorities. First, the existing facilities should be upgraded to meet current research needs. Additional upgrades should be completed within the context of an expansion of the Station's capacity and capabilities, so that within ten years it can support about 80 scientists in summer and 15 scientists in winter. Within 20 years all improvements should be completed, including replacement of existing laboratory and dormitory facilities with new, higher quality structures.

A number of improvements have already been made or are underway, in response to the recommendations in this report, including improvements to communications systems, meeting and storage facilities, and planning for electrical, water, and waste-handling upgrades. The highest remaining priorities are:

- completing improvements to communications facilities and the multifunctional meeting room,
- improving the fresh-water supply and treatment system,
- developing an improved method of greywater disposal,
- upgrading the electrical system and generator housing,
- providing new housing for investigators, including a winterized 10-person living unit and a 40-person residence, and
- developing a less-costly, higher capacity method of sewage disposal and/or on-site treatment.

Implementation of these high-priority improvements can begin immediately and may cost \$3 million. The next improvements should expand existing capabilities of TFS to support additional activities and people, along with continued improvements and upgrades. These include:

- construction of helicopter support facilities,
- expansion or replacement of the existing kitchen and food preparation areas,
- construction of a new station washing facility, and
- ongoing replacement, with expansion, of existing laboratories and housing, including family housing.

These latter improvements should be completed within the next five years and are expected to cost an additional \$1.5-2.5 million (see Appendix 3, Table 2, Upgrade Priorities).



Toolik Field Station in June 1995, looking south toward the Brooks Range. (Photo by Paul Salvatore, courtesy of BLM)

Toolik Field Station Users 1988-1996, Universities and Organizations

Alascom
 Alaska Helicopters
 Alaska West Air
 Antarctic Support Services
 Arctic Research Consortium of the United States
 Arizona State University
 Botanisches Institut der Universitat, Switzerland
 Bowling Green State University
 Brown University
 Bureau of Land Management
 Central Washington University
 CHEDD/ANGIER Productions
 Cold Regions Research and Engineering Laboratory
 Colorado State University
 Danish Polar Center
 Duke University
 East Carolina University
 Florida International University
 Forestry, Tasmania, Australia
 FPE/ROEN
 Freshwater Institute, Canada
 Idaho State University
 Institute of Soil Science and Photosynthesis
 Ketchum Air Service
 Marine Biological Laboratory
 Michigan State University
 Murray State University
 National Science Foundation
 New Mexico State University
 North Slope Borough
 NSI Tech. Services Inc.
 Oak Ridge National Laboratory
 Oregon State University
 Paul Scherrer Institute
 Providence Journal Company
 Rice University
 Rijksuniversiteit Groningen, The Netherlands
 Russian Field Station, Russia
 Rutgers University
 SAIC, San Diego
 San Diego State University
 Science Magazine
 Scott Polar Research Institute
 Seattle Times
 Smithsonian Institution
 State of Alaska

- Department of Natural Resources
- Division of Geological and Geophysical Surveys

 Stanford University
 State University of New York - Albany
 Tages-Anzeiger
 Tallinn Botanical Garden, Estonia

The Ohio State University
 Trans-Alaska-Helicopters
 U.S. Geological Survey
 University of Alabama
 University of Alaska–Fairbanks

- Geophysical Institute
- Institute of Arctic Biology
- Institute of Marine Science
- KUAC-TV
- Water Research Center

 University of California–Berkeley
 University of California–Irvine
 University of California–Riverside
 University of California–San Diego
 University of California–Santa Barbara
 University of Cincinnati
 University of Colorado

- Institute of Arctic and Alpine Research

 University of Connecticut
 University of Georgia
 University of Göteborg, Sweden
 University of Heidelberg, Germany
 University of Houston
 University of Illinois
 University of Joensuu, Finland
 University of Kansas
 University of Michigan – Ann Arbor
 University of Minnesota – Duluth
 University of Mississippi
 University of Nebraska–Lincoln
 University of New Hampshire
 University of New Mexico
 University of North Carolina–Chapel Hill
 University of North Carolina–Greensboro
 University of Notre Dame
 University of Puerto Rico
 University of South Carolina
 University of Tennessee
 University of Toronto
 University of Turku, Russia
 University of Virginia
 University of Washington
 University of Wisconsin–Madison
 University of Wyoming
 Universidad Austral, Chile
 Universite Laval, Canada
 University O.F.S., South Africa
 U.S. Department of Agriculture

- Pacific Northwest Experiment Station

 U.S. Environmental Protection Agency

- Environmental Laboratory

 WBUR-FM, Boston
 West Virginia University

User information was provided by the Institute of Arctic Biology, University of Alaska Fairbanks. Information from 1975-1987 is not available.

Developing Community Contacts



UNIVERSITY OF ALASKA FAIRBANKS

INSTITUTE OF ARCTIC BIOLOGY
Fairbanks, Alaska 99775-0180 U.S.A.

(907) 474-7640
FAX: (907) 474-6967

6 August 1996

Dear Toolik Field Station Investigator:

In discussions during the February, 1995, N.S.F. sponsored workshop developing a Science Mission Statement for the Toolik Field Station it emerged that, as good neighbors, investigators using Toolik or doing research elsewhere in Northern Alaska should consider visiting communities of The North Slope Borough to communicate about their science. I'm writing today to provide a contact name, address and phone number for those wishing to arrange ahead with officials of the North Slope Borough to schedule a visit. The North Slope Borough is the "county" that consists of much of Northern Alaska.

Contacts between researchers and North Slope residents could consist of visits to the city of Barrow's K-12 science classes to give a talk about your work, visiting Barrow's Arctic Sivunmun Iisagvik College, and/or being interviewed on Barrow's radio station KBRW. Currently you may send copies of papers or reports from work done in the Borough, but a personal visit is the best possible way to meet the community and involve them in your work.

The new Barrow Arctic Science Consortium -- Richard Glenn, President, and Glenn Sheehan, Executive Director -- can help make arrangements for visits and presentations.

Contact: Betty Smith, Barrow Arctic Science Consortium, phone (907) 852-4881; fax (907) 852-8213; address P.O. Box 955, Barrow, Alaska, 99723; email basc@barrow.com

Sincerely,

Brian M. Barnes
Chair, Toolik Field Station Steering Committee
email fbmb@aurora.alaska.edu

Upgrade Priorities

Table 2. A number of upgrades have been initiated in response to the initial workshop recommendations. This table of upgrade priorities, indicating upgrades already underway and current priorities, was prepared by the Toolik Management Group. The priority recommendations and costs in Table 2 are based on workshop recommendations, a user survey, and management organization and funding agency discussions. Updated 27 August 1996.

Projects currently underway or completed	Cost (in thousands of dollars)
Planning services for upgrades to electrical, water, and waste-handling systems (NSF)	69
Two 125 kW generators (NSF property)	38
Multifunctional meeting room/library/work space (provided by IAB funding)	35
Communications (two additional phone lines) (NSF)	20
Furniture for new laboratories (NSF)	13
Boardwalks for access to research sites (NSF)	15
Shipping/receiving/storage/winter vehicle facility (NSF)	100
Subtotal	290
Immediate improvements recommended to meet existing needs	Estimated Cost (in thousands of dollars)
New generator building and electric switch gear to upgrade system	200
Water supply and treatment system	100
New greywater disposal system	500
One two-story living unit (40-person, bathrooms, showers, and common space – replacement)	750
Winter facility (combination dormitory/kitchen/generator for 10 people)	250-500
Improved sewage handling/disposal capability	800
Upgrade roads, gravel pad, drainage	100
Fork Lift/Loader	120
Subtotal	2,820-3,070
Short-term expansion and upgrades (one to five years)	Estimated Cost (in thousands of dollars)
New kitchen, dining hall, and food storage facility (convert old kitchen into meeting room)	500-750
Helicopter support facility including safe landing pad and fuel storage and delivery	25-50
Double-wide lab facility No. I (replacement)	500
Double-wide lab facility No. II (replacement)	500
Laundry and mud room facility	50-100
Workshop (replacement)	100-200
Tent platforms, walkways (tenting area)	25
Family housing	75
Mobile lab	100
Subtotal	1,875-2,300
Long-term expansion and upgrades (five to ten years)	Estimated Cost (in thousands of dollars)
Second two-story living unit (40-person, bathrooms, showers, and common space – replacement)	850
Double-wide lab facility No. III (replacement)	600
Stable isotope laboratory (replacement)	50
Sub-total	1,500
Total	6,485-7,160

Contributors, Reviewers, and Workshop Participants

The names of the workshop organizing committee members are in bold

Michael A. Abels
Institute of Arctic Biology
University of Alaska Fairbanks
P.O. Box 757000
Fairbanks, AK 99775-7000
Phone: 907/474-5063 • Fax: 907/474-6967
E-mail: fnmaa@aurora.alaska.edu

Brian M. Barnes
Institute of Arctic Biology
University of Alaska Fairbanks
P.O. Box 757000
Fairbanks, AK 99775
Phone: 907/474-6067 • Fax: 907/474-6967
E-mail: ffbmb@aurora.alaska.edu

James P. Barry
Monterey Bay Aquarium Research Institute
P.O. Box 628
Moss Landing, CA 95039
Phone: 408/775-1726 • Fax: 408/775-1620
E-mail: barry@mbari.org

Jerry Brown
International Permafrost Association
P.O. Box 9200
Arlington, VA 22219-0200
Phone: 703/525-3136
E-mail: jerrybrown@igc.apc.org

Linda Brubaker
College of Forest Resources
University of Washington
P.O. Box 352100
Seattle, WA 98195-2100
Phone: 206/543-5778 • Fax: 206/543-3254
E-mail: lbru@u.washington.edu

F. Stuart Chapin
Department of Integrative Biology
University of California
Valley Life Sciences Building
Berkeley, CA 94720-3140
Phone: 510/642-1003 • Fax: 510/643-6264
E-mail: fschapin@garnet.berkeley.edu

Marijane E. England
Snow and Ice Research Group
University of Nebraska-Lincoln
2255 W Street, Suite 101
Lincoln, NE 68583-0850
Phone: 402/472-9833 • Fax: 402/472-9832
E-mail: mengland@unlinfo.unl.edu

Robert van Everdingen
Arctic Institute of North America
2712 Chalice Road NW
Calgary, Alberta T2L 1C8
Canada
Phone: 403/289-6823

Lynn Everett
Byrd Polar Research Center
The Ohio State University
176 Scott Hall
Columbus, OH 43210
Phone: 614/292-6715 • Fax: 614/292-4697
E-mail: leverett@magnus.acs.ohio-state.edu

Sally Fenno
P.O. Box 83249
Fairbanks, AK 99708
Phone: 907/479-7901
E-mail: fssf@aurora.alaska.edu

David Fitzjarrald
Atmospheric Science Research Center
State University of New York at Albany
100 Fuller Road
Albany, NY 12205
Phone: 518/442-3838 • Fax: 518/442-3867
E-mail: fitz@halfog.asrc.albany.edu

Richard Glenn
Department of Energy Management
North Slope Borough
P.O. Box 1120
Barrow, AK 99723
Phone: 907/852-0395 • Fax: 907/852-8971
E-mail: rglennc@co.north-slope.ak.us

Claire S. Hanson
Cooperative Institute for Research in
Environmental Sciences
National Snow and Ice Data Center
University of Colorado
Campus Box 449
Boulder, CO 80309-0449
Phone: 303/492-1834 • Fax: 303/492-2468
E-mail: hanson@kryos.colorado.edu

Steve Hastings
Department of Biology
Global Change Research Group
San Diego State University
San Diego, CA 92182
Phone: 619/594-4764
E-mail: shastings@sunstroke.sdsu.edu

Anne Hershey
Department of Biology
University of Minnesota Duluth
10 University Drive
Duluth, MN 55812
Phone: 218/726-8200 • Fax: 218/726-8142
E-mail: ahershey@ub.d.umn.edu

Larry D. Hinzman
Water Research Center
University of Alaska Fairbanks
P.O. Box 755860
Fairbanks, AK 99775-5860
Phone: 907/474-7331 • Fax: 907/474-7979
E-mail: ffldh@aurora.alaska.edu

John E. Hobbie
The Ecosystems Center
Marine Biological Laboratory
167 Water Street
Woods Hole, MA 02543
Phone: 508/548-6704 • Fax: 508/457-1548
E-mail: jhobbie@lupine.mbl.edu

Sarah Hobbie
Department of Biological Sciences
Stanford University
Stanford, CA 94305
Phone: 415/725-1856 • Fax: 415/725-1856
E-mail: shobbie@leland.stanford.edu

Allen S. Hope
Department of Geography
San Diego State University
San Diego, CA 92182-4493
Phone: 619/594-2777 • Fax: 619/594-4938
E-mail: ahope@sciences.sdsu.edu

Robert Jefferies
Department of Botany
University of Toronto
25 Willcocks Street
Toronto, Ont M5S 3B2
Canada
Phone: 416/978-3534 • Fax: 416/978-5878
E-mail: jefferie@botany.utoronto.ca

Douglas L. Kane
Department of Civil Engineering
University of Alaska Fairbanks
P.O. Box 755900
Fairbanks, AK 99775-5860
Phone: 907/474-7808 • Fax: 907/474-7979
E-mail: ffdlk@aurora.alaska.edu

George Kling
Department of Biology
University of Michigan
Natural Sciences Building
Ann Arbor, MI 48109-1048
Phone: 313/747-0894 • Fax: 313/747-0884
E-mail: gwk@umich.edu

Karl C. Kuivinen
Snow and Ice Research Group
University of Nebraska-Lincoln
2255 W Street, Suite 101
Lincoln, NE 68583-0850
Phone: 402/472-9833 • Fax: 402/472-9832
E-mail: kuivinen@unlinfo.unl.edu

Owen K. Mason
Alaska Quaternary Center
University of Alaska Museum
University of Alaska Fairbanks
P.O. Box 756960
Fairbanks, AK 99775-6960
Phone: 907/474-6293 • Fax: 907/474-5469
E-mail: fnokm@aurora.alaska.edu

Debra Meese
Cold Regions Research and Engineering Laboratory
72 Lyme Road
Hanover, NH 03755-1290
Phone: 603/646-4594 • Fax: 603/646-4644
E-mail: dmeese@hanover-crrel.army.mil

Robert J. Naiman, *workshop chair*
Center for Streamside Studies
University of Washington
AR 10
Seattle, WA 98195
Phone: 206/543-6920 • Fax: 206/543-3254
E-mail: naiman@u.washington.edu

Stevenz Oberbauer
Department of Biological Sciences
Florida International University
University Campus Park
Miami, FL 33199
Phone: 305/348-2580 • Fax: 305/348-1986
E-mail: oberbaue@servms.fiu.edu

Walter C. Oechel
Department of Biology
Global Change Research Group
San Diego State University
Physical Sciences Building, Room 240
San Diego, CA 92182-0001
Phone: 619/594-4818 • Fax: 619/594-7831
E-mail: oechel@sunstroke.sdsu.edu

Andy Parsons
Natural Resource Ecology Laboratory
Colorado State University
Fort Collins, CO 80523-1499
Phone: 970/491-1098 • Fax: 970/491-1965
E-mail: andy@nrel.colostate.edu

Delbert Rexford
Mayor's Office
North Slope Borough
P.O. Box 69
Barrow, AK 99723
Phone: 907/852-0200 • Fax: 907/852-0247

E. Fred Roots
Department of the Environment
4th Floor, North Tower
Ottawa, Ontario K1A 0H3
Canada
Phone: 819/997-2393 • Fax: 819/953-1626

Paul Salvatore
Arctic District Office, Bureau of Land Management
United States Department of the Interior
1150 University Avenue
Fairbanks, AK 99709-3844
Phone: 907/474-2310 • Fax: 907/474-2280

Joshua Schimel
Department of Ecology, Evolution and Marine Biology
University of California, Santa Barbara
Santa Barbara, CA 93106
Phone: 805/893-7688 • Fax: 805/893-4724
E-mail: schimel@lifesci.lscf.ucsb.edu

Gaius Shaver
The Ecosystems Center
Marine Biological Laboratory
167 Water Street
Woods Hole, MA 02543
Phone: 508/289-7492 • Fax: 508/457-1548
E-mail: gshaver@lupine.mbl.edu

Donald Stone
Organization for Tropical Studies
Box 90630
Durham, NC 27708
Phone: 919/684-5774 • Fax: 919/684-5661
E-mail: dstone@acpub.duke.edu

Robert G. Striegl
Water Resources Division
United States Geological Survey
Federal Center - Mail Stop 413
Denver, CO 80225-0046
Phone: 303/236-4993 • Fax: 303/236-5034
E-mail: rstriegl@swampgas.cr.usgs.gov

Matthew Sturm
Cold Regions Research and Engineering Laboratory
P.O. Box 35170
Fort Wainwright, AK 99703-0170
Phone: 907/353-5183 • Fax: 907/353-5142
E-mail: msturm@crrel.usace.army.mil

Dennis Tupick
Office of Polar Programs
National Science Foundation
Arlington, VA 22230
Phone: 703/306-1045 x 7376 • Fax: 703/306-0139
E-mail: dtupick@nsf.gov

George Vourlitis
Department of Biology
Global Change Research Group
San Diego State University
San Diego, CA 92182
Phone: 619/594-2616 • Fax: 619/594-7831
E-mail: georgev@sunstroke.sdsu.edu

Marilyn Walker
Institute of Arctic and Alpine Research
University of Colorado
Campus Box 450
Boulder, CO 80309-0450
Phone: 303/492-5276 • Fax: 303/492-6388
E-mail: mwalker@taimyr.colorado.edu

Wendy K. Warnick
Arctic Research Consortium of the United States
600 University Avenue, Suite 1
Fairbanks, AK 99709
Phone: 907/474-1600 • Fax: 907/474-1604
E-mail: warnick@polarnet.com

Patrick J. Webber
Department of Botany and Plant Pathology
Michigan State University
100 North Kedzie Hall
East Lansing, MI 48824-1031
Phone: 517/355-1284 • Fax: 517/432-2150
E-mail: webber@pilot.msu.edu

Jeffrey M. Welker
Natural Resource Ecology Laboratory
Rangeland Ecosystem Science Department
Colorado State University
Fort Collins, CO 80523
Phone: 303/491-1019 • Fax: 303/491-1965
E-mail: jeff@nrel.colostate.edu

Robert G. White
Institute of Arctic Biology
University of Alaska Fairbanks
P.O. Box 757000
Fairbanks, Alaska 99775-7000
Phone: 907/474-7648 • Fax: 907/474-6967
E-mail: ffrgw@aurora.alaska.edu

Kevin Widener
Pacific Northwest Laboratory
P.O. Box 999, MS K5-17
Richland, WA 99352
Phone: 509/375-2487 • Fax: 509/375-6736
E-mail: kb_widener@pnl.gov

John Wingfield
Department of Zoology
University of Washington
P.O. Box 351800
Seattle, WA 98195
Phone: 206/543-7622 • Fax: 206/543-3041
E-mail: wingfield@u.washington.edu

Michael Worley
Arctic District Office, Bureau of Land Management
United States Department of the Interior
1150 University Avenue
Fairbanks, AK 99709-3844
Phone: 907/474-2301 • Fax: 907/474-2248

Alison York
Institute of Arctic Biology
University of Alaska Fairbanks
P.O. Box 757000
Fairbanks, AK 99775
Phone: 907/474-6553 • Fax: 907/474-6967
E-mail: fnady@aurora.alaska.edu

Bernard D. Zak
Environmental Characterization and Monitoring
Systems Department
Sandia National Laboratories
Mail Stop 0755
Albuquerque, NM 87185-0755
Phone: 505/845-8631 • Fax: 505/844-0116
E-mail: bdzak@sandia.gov

List of Toolik-Based Publications and Theses

Publications

This list of publications and theses is not assumed to be comprehensive. ARCUS will maintain this bibliography on the ARCUS Web site through December 1996, at which time it will be turned over to IAB. Send missing publications and corrections to ARCUS at arcus@polarnet.com. The updated bibliography will be accessible through <http://arcus.polarnet.com>.

- Alexander, V., S.C. Whalen and K.M. Klingensmith. 1988. Nitrogen cycling in arctic lakes and ponds. *Hydrobiologia* 172:165-172.
- Barnes, B.M. 1989. Freeze avoidance in a mammal: body temperatures below 0° C in an arctic hibernator. *Science* 244:1593-1595.
- Barnes, B.M. 1996. Relationships between hibernation and reproduction in male ground squirrels. In: F. Geiser, A.J. Hulbert and S.C. Nichol (eds.). *Adaptations to the cold*. University of New England Press, Armidale, Australia. 71-80.
- Barnes, N.M. 1996. Sang froid: the supercooled "slumber" of the coldest mammal on earth. *The Sciences* 36:12-14.
- Barnes, B.M., C. Omtzigt and S. Daan. 1993. Hibernators periodically arouse in order to sleep. In: C. Carey, G.L. Florant, B.A. Wunder and B. Horwitz (eds.). *Life in the cold: ecological, physiological, and molecular mechanisms*. Westview Press, Boulder, CO. 555-558.
- Barnes, B.M., and D. Ritter. 1993. Patterns of body temperature change in hibernating arctic ground squirrels. In: C. Carey, G.L. Florant, B.A. Wunder and B. Horwitz (eds.). *Life in the cold: ecological, physiological, and molecular mechanisms*. Westview Press, Boulder, CO. 119-130.
- Batzli, G.O., and H. Henttonen. 1990. Demography and resource use by microtine rodents near Toolik Lake, Alaska, U.S.A. *Arctic and Alpine Research* 22:51-64.
- Bowden, W.B., J.C. Finlay and P.E. Maloney. 1994. Long-term effects of PO₄ fertilization on the distribution of bryophytes in an arctic river. *Freshwater Biology* 32:445-454.
- Bowden, W.B., B.J. Peterson, J.C. Finlay and J. Tucker. 1992. Epilithic chlorophyll a, photosynthesis and respiration in control of a tundra stream. *Hydrobiologia* 240:121-132.
- Bruns, D.A., G.W. Minshall, C.E. Cushing, K.W. Cummins, J.T. Brock and R.L. Vannote. 1984. Tributaries as modifiers of the river continuum concept: analysis by polar ordination and regression models. *Archiv für Hydrobiologie* 99:208-220.
- Buchanan, C. 1988. *Daphnia* (crustacean) swimming responses to light quality in chambers simulating natural spatial distribution of light. *Bulletin of Marine Science* 43:845.
- Buchanan, C., and J.F. Haney. 1980. Vertical migrations of zooplankton in the arctic: a test of the environmental controls. In: W.C. Kerfoot (ed.). *Evolution and ecology of zooplankton communities*. University Press of New England, Hanover, NH. 69-79.
- Butler, M.G. 1982. A seven-year cycle for two Chironomus species in arctic Alaskan tundra ponds (Diptera: Chironomidae). *Canadian Journal of Zoology* 60:58-70.
- Chapin, F.S., III, N. Fetcher, K. Kielland, K.R. Everett and A.E. Linkins. 1988. Productivity and nutrient cycling of Alaskan tundra: enhancement by flowing soil water. *Ecology* 69:693-702.
- Chapin, F.S., III, S.E. Hobbie and G.R. Shaver. 1996. Impacts of global change on composition of arctic communities: implications for ecosystem functioning. In: W.C. Oechel and J. Holten (eds.). *Global change and arctic terrestrial ecosystems*. Springer-Verlag, New York, NY.
- Chapin, F.S., III, R. Jefferies, R. Reynolds, G. Shaver and J. Svoboda. 1992. Arctic physiological ecology in an ecosystems context. In: F.S. Chapin III, R. Jefferies, R. Reynolds, G. Shaver and J. Svoboda (eds.). *Arctic ecosystems in a changing climate: an ecophysiological perspective*. Academic Press, New York, NY. 3-10.
- Chapin, F.S., III, R. Jefferies, R. Reynolds, G. Shaver and J. Svoboda. 1992. Arctic plant physiological ecology: a challenge for the future. In: F.S. Chapin III, R. Jefferies, R. Reynolds, G. Shaver and J. Svoboda (eds.). *Arctic ecosystems in a changing climate: an ecophysiological perspective*. Academic Press, New York, NY. 441-452.
- Chapin, F.S., III, R. Jefferies, R. Reynolds, G. Shaver and J. Svoboda (eds.). 1992. *Arctic ecosystems in a changing climate: an ecophysiological perspective*. Academic Press, New York, NY. 469 pp.
- Chapin, F.S., III, J.B. McGraw and G.R. Shaver. 1989. Competition causes regular spacing of alder in Alaskan shrub tundra. *Oecologia* 79:412-416.
- Chapin, F.S., III, and G.R. Shaver. 1981. Changes in soil properties and vegetation following disturbance of Alaskan arctic tundra. *Journal of Applied Ecology* 18:605-617.
- Chapin, F.S., III, and G.R. Shaver. 1985. Individualistic growth response of tundra plant species to manipulation of light, temperature and nutrients in a field experiment. *Ecology* 66:564-576.
- Chapin, F.S., III, and G.R. Shaver. 1985. The physiological ecology of arctic plants. In: B. Chabot and H.A. Mooney (eds.). *Physiological ecology of North American plant communities*. Chapman and Hall, London. 16-40.
- Chapin, F.S., III, and G.R. Shaver. 1988. Differences in carbon and nutrient fractions among arctic growth forms. *Oecologia* 77:506-514.
- Chapin, F.S., III, and G.R. Shaver. 1989. Differences in growth and nutrient use among arctic plant growth forms. *Functional Ecology* 3:73-80.
- Chapin, F.S., III, and G.R. Shaver. 1989. Lack of latitudinal variations in graminoid storage reserves. *Ecology* 70:269-272.
- Chapin, F.S., III, and G.R. Shaver. (In press). Physiological and growth responses of arctic plants to a field experiment simulating climatic change. *Ecology*.
- Chapin, F.S., III, G.R. Shaver, A.E. Giblin, K.J. Nadelhoffer and J.A. Laundre. 1995. Responses of arctic tundra to experimental and observed changes in climate. *Ecology* 76:694-711.
- Chapin, F.S., III, G.R. Shaver and R.A. Kedrowski. 1986. Environmental controls over carbon, nitrogen and phosphorus chemical fractions in *Eriophorum vaginatum* L. in Alaskan tussock tundra. *Journal of Ecology* 74:167-196.
- Chester, A.L., and G.R. Shaver. 1982. Reproductive effort in cottongrass-tussock tundra. *Holarctic Ecology* 5:200-206.
- Chester, A.L., and G.R. Shaver. 1982. Seedling dynamics of some cottongrass-tussock tundra species during the natural revegetation of small disturbed areas. *Holarctic Ecology* 5:207-211.
- Clein, J.S., and J.P. Schimel. 1995. Microbial activity of tundra and taiga soils at sub-zero temperatures. *Soil Biology and Biochemistry* 27:1231-1234.
- Cooper, L.W. (In press). Isotopic fractionation in snow cover In: J.J. McDonnell and C. Kendall (eds.). *Isotopic tracers in catchment hydrology*. Elsevier, Amsterdam.
- Cooper, L.W., J.M. Grebmeier, I.L. Larsen, C. Solis and C.R. Olsen. 1995. Evidence for re-distribution of cesium-137 in Alaskan tundra, lake and marine sediments. *The Science of the Total Environment* 160/161:295-306.

- Cooper, L.W., I.L. Larsen, C. Solis, J.M. Grebmeier, C.R. Olsen, D.K. Solomon and R.B. Cook. 1996. Isotopic tracers for evaluating hydrological processes. In: J.F. Reynolds and J.D. Tenhunen (eds.). *Landscape function: implications for ecosystem response to disturbance*. Springer-Verlag, Berlin. 165-182.
- Cooper, L.W., C.R. Olsen, D.K. Solomon, I.L. Larsen, R.B. Cook and J.M. Grebmeier. 1991. Stable isotopes of oxygen and natural and fallout radionuclides used for tracing runoff during snowmelt in an Arctic watershed. *Water Resources Research* 27:2171-2179.
- Cooper, L.W., C. Solis, D.L. Kane and L.D. Hinzman. 1993. Application of oxygen-18 tracer techniques to arctic hydrologic processes. *Arctic and Alpine Research* 25:247-255.
- Cornwell, J.C. 1985. Sediment accumulation rates in an Alaskan arctic lake using a modified ^{210}Pb technique. *Canadian Journal of Fisheries and Aquatic Sciences* 42:809-814.
- Cornwell, J.C. 1986. Diagenetic trace metal profiles in arctic lake sediments. *Environmental Science and Technology* 20:299-302.
- Cornwell, J.C. 1987. Migration of metals in sediment pore waters: problems for the interpretation of historical deposition rates. In: *Proceedings of the 6th International Conference on Heavy Metals in the Environment*, New Orleans, LA. 233-235.
- Cornwell, J.C. 1987. Phosphorus cycling in arctic lake sediments: adsorption and authigenic minerals. *Archiv für Hydrobiologie* 109:161-179.
- Cornwell, J.C. 1992. Cation export from Alaskan arctic watersheds. *Hydrobiologia* 240:15-22.
- Cornwell, J.C., and S. Banahan. 1992. A silicon budget for an Alaskan arctic lake. *Hydrobiologia* 240:37-44.
- Cornwell, J.C., and R.J. Barsdate. 1977. Sensitivity of arctic lakes to phosphorus loading. In: *Technical session papers, 19th Alaska Science Conference*. 57-61.
- Cornwell, J.C., and G.W. Kipphut. 1992. Biogeochemistry of manganese- and iron-rich sediments in Toolik Lake, Alaska. *Hydrobiologia* 240:45-59.
- Cuker, B.E. 1983. Competition and coexistence between the grazing snail *Lymnaea*, *Chironomidae* and microcrustacea in an arctic epilithic lacustrine community. *Ecology* 64:10-15.
- Cuker, B.E. 1983. Grazing and nutrient interactions in controlling the activity and composition of the epilithic algal community of an arctic lake. *Limnology and Oceanography* 28:133-141.
- Cuker, B.E., M.E. McDonald and S.C. Mozley. 1992. Influences of slimy sculpin (*Cottus cognatus*) predation on the rocky littoral invertebrate community of an arctic lake. *Hydrobiologia* 240:83-90.
- Cuker, B.E., and S.C. Mozley. 1981. Summer population fluctuations, feeding, and growth of *Hydra* in an arctic lake. *Limnology and Oceanography* 26:697-708.
- Daan, S., B.M. Barnes and A.M. Strijkstra. 1991. Warming up for sleep? – ground squirrels sleep during arousals from hibernation. *Neuroscience Letters* 128:265-268.
- Daan, S., A.M. Strijkstra and B.M. Barnes. 1992. The elusive function of sleep: new insight from hibernators? In: T. Hiroshige and K. Honma (eds.). *Circadian clocks from cell to human*. Hokkaido University Press, Sapporo. 165-176.
- Deegan, L.A., and B.J. Peterson. 1992. Whole-river fertilization stimulates fish production in an arctic tundra river. *Canadian Journal of Fisheries and Aquatic Sciences* 49:1890-1901.
- Deegan, L.A., B.J. Peterson, H. Golden, C. MacIvor and M. Miller. (In press). The effects of fish density and river fertilization on algal standing stock, invertebrate communities and fish production in an arctic river. *Canadian Journal of Fisheries and Aquatic Sciences*.
- Eisner, W.R. 1991. Palynological analysis of a peat core from Imnavait Creek, the North Slope, Alaska. *Arctic* 44:279-282.
- Eisner, W.R., and P.A. Colinvaux. 1992. Late Quaternary pollen records from Oil Lake and Feniak Lake, Alaska, U.S.A. *Arctic and Alpine Research* 24:56-63.
- Evans, B.I., and W.J. O'Brien. 1987. A re-evaluation of the search cycle of planktivorous arctic grayling, *Thymallus arcticus*. *Canadian Journal of Fisheries and Aquatic Sciences* 45:187-192.
- Everett, K.R., D.L. Kane and L.D. Hinzman. 1996. Surface water chemistry and hydrology of a small arctic drainage basin. In: J. Reynolds and J. Tenhunen (eds.). *Landscape function: implications for ecosystem response to disturbance. A case study in arctic tundra*. Springer-Verlag, Ecologic Studies Series. 185-201.
- Everett, K.R., G.M. Marion and D.L. Kane. 1989. Seasonal geochemistry of an arctic tundra drainage basin. *Holarctic Ecology* 12:279-289.
- Federle, T.W., V.L. McKinley and J.R. Vestal. 1982. Effects of nutrient enrichment on the colonization and decomposition of plant detritus by the microbiota of an arctic lake. *Canadian Journal of Microbiology* 28:1199-1205.
- Federle, T.W., V.L. McKinley and J.R. Vestal. 1982. Physical determinants of microbial colonization and decomposition of plant litter in an arctic lake. *Microbial Ecology* 8:127-138.
- Federle, T.W., and J.R. Vestal. 1980. Lignocellulose mineralization by arctic lake sediments in response to nutrient manipulation. *Applied and Environmental Microbiology* 40:32-39.
- Federle, T.W., and J.R. Vestal. 1980. Microbial colonization and decomposition of *Carex* litter in an arctic lake. *Applied and Environmental Microbiology* 39:888-893.
- Federle, T.W., and J.R. Vestal. 1982. Evidence of microbial succession on decaying leaf litter in an arctic lake. *Canadian Journal of Microbiology* 28:686-695.
- Fetcher, N., and G.R. Shaver. 1982. Growth and tillering patterns within tussocks of *Eriophorum vaginatum*. *Holarctic Ecology* 5:180-186.
- Fetcher, N., and G.R. Shaver. 1983. Life histories of tillers of *Eriophorum vaginatum* in relation to tundra disturbance. *Journal of Applied Ecology* 71:131-148.
- Fetcher, N., and G.R. Shaver. 1990. Environmental sensitivity of ecotypes as a potential influence on productivity. *American Naturalist* 136:126-131.
- Finlay, J.C., and W.B. Bowden. 1994. Controls on production of bryophytes in an arctic tundra stream. *Freshwater Biology* 32:455-466.
- Ford, T.E., and M.A. Lock. 1988. A microcalorimetric investigation of the effect of high molecular weight organics on epilithic metabolism. *Archiv für Hydrobiologie* 31:195-201.
- Ford, T.E., M. Walch, R. Mitchell, M.J. Kaufman and M.A. Lock. 1989. Influence of nutrient enrichment of an arctic river on biofilm formation on metal surfaces. *Biofouling* 1:301-311.
- Fry, B. 1991. Stable isotope diagrams of freshwater food webs. *Ecology* 72:2293-2297.
- Fry, B., D.E. Jones, G.W. Kling, R.B. McKane, K.J. Nadelhoffer and B.J. Peterson. 1995. Adding ^{15}N tracers to ecosystem experiments. In: E. Wada, T. Yoneyama, M. Minegawa, T. Ando and B. Fry (eds.). *Stable isotopes in the biosphere*. Kyoto University Press, Kyoto. 171-192.
- Gartner, B.L., F.S. Chapin III and G.R. Shaver. 1983. Demographic patterns of seedling establishment and growth of native graminoids in an Alaskan tundra disturbance. *Journal of Applied Ecology* 20:965-980.
- Gartner, B.L., F.S. Chapin III and G.R. Shaver. 1986. Reproduction by seed in *Eriophorum vaginatum* in Alaskan tussock tundra. *Journal of Ecology* 74:1-19.

- Gibeau, G.G., and M.C. Miller. A micro-bioassay for epilithon using nutrient diffusing artificial substrata. *Journal of Freshwater Ecology* 5:171-176.
- Giblin, A.E., J. Laundre, K. Nadelhoffer and G. Shaver. 1994. Measuring nutrient availability in arctic soils using ion-exchange resins: a field test. *Soil Sci. Soc. Am. J* 58:1154-1162.
- Giblin, A.E., K.J. Nadelhoffer, G.R. Shaver, J.A. Laundre and A.J. McKerrow. 1991. Biogeochemical diversity along a riverside toposequence in arctic Alaska. *Ecological Monographs* 61:415-435.
- Gilmanov, T.G., and W.C. Oechel. (Submitted). New estimates of organic matter reserves and net primary productivity. *Global Ecology and Biogeography Letters*.
- Goering, D.J., H. Chen, L.D. Hinzman and D.L. Kane. 1994. Terrain correction of SAR imagery of Alaska tundra. *IEEE Transactions on Geoscience and Remote Sensing* 33:185-194.
- Goering, D.J., Z. Zhang, L.D. Hinzman and D.L. Kane. 1995. A spatially distributed hydrologic model applied to an arctic watershed. Wadati Conference on Global Change and the Polar Climate. 7-10 November 1995, Tsukuba Science City, Japan. Geophysical Institute, University of Alaska and Wadati Conference Local Organizing Committee, Japan. 138-141.
- Goyke, A.P., and A.E. Hershey. 1992. Effects of fish predation on larval chironomid (Diptera: *Chironomidae*) communities in an arctic ecosystem. *Hydrobiologia* 240:203-212.
- Grebmeier, J.M., L.W. Cooper, I.L. Larsen, C. Solis and C.R. Olsen. 1993. Cesium-137 inventories in Alaskan tundra, lake and marine sediments: an indicator of recent organic material transport? In: Applications of isotope techniques in studying past and current environmental changes in the hydrosphere and the atmosphere. International Atomic Energy Agency, Vienna.
- Grulke, N.E., G.H. Riechers, W.C. Oechel, U. Hjelm and C. Jaeger. 1990. Carbon balance in tussock tundra under ambient and elevated atmospheric CO₂. *Oecologia* 83:485-494.
- Hahn, S.C., S.F. Oberbauer, R. Gebauer, N.E. Grulke, O.L. Lange and J.D. Tenhunen. 1996. Aboveground carbon and nutrient pools in the vegetation mosaic of the Imnavait Creek Watershed. In: J.F. Reynolds and J.D. Tenhunen (eds.). *Landscape function and disturbance in the Arctic*. Ecological Studies Series vol 120, Springer Verlag. 109-128.
- Hanson, K.L., A.E. Hershey and M.E. McDonald. 1992. A comparison of slimy sculpin (*Cottus cognatus*) populations in arctic lakes with and without piscivorous predators. *Hydrobiologia* 240:189-202.
- Hastings, S.J., S.A. Luchessa, W.C. Oechel and J.D. Tenhunen. 1989. Standing biomass and production in water drainages of the foothills of the Philip Smith Mountains, Alaska. *Holarctic Ecology*. 12:304-311.
- Hershey, A.E. 1985. Effects of predatory sculpin on the chironomid communities in an arctic lake. *Ecology* 66:1131-1138.
- Hershey, A.E. 1985. Littoral chironomid communities in an arctic Alaskan lake. *Holarctic Ecology* 8:39-48.
- Hershey, A.E. 1986. Selective predation by *Procladius* in an arctic Alaskan lake. *Canadian Journal of Fisheries and Aquatic Sciences* 43:2523-2528.
- Hershey, A.E. 1990. Snail populations in arctic lakes: competition mediated by predation. *Oecologia* 82:26-32.
- Hershey, A.E. 1992. Effects of experimental fertilization on the benthic macroinvertebrate community of an arctic lake. *Journal of the North American Benthological Society* 11:204-217.
- Hershey, A.E., W.B. Bowden, L.A. Deegan, J.E. Hobbie, B.J. Peterson, G.W. Kipphut, G.W. Kling, M.A. Lock, M.C. Miller and J.R. Vestal. (In press). The Kuparuk River: a long-term study of biological and chemical processes in an arctic river. In: A. Milner and M.W. Oswood (eds.). *Alaskan freshwaters*. Springer-Verlag, New York, NY.
- Hershey, A.E., and A.L. Hiltner. 1988. Effects of caddisfly activity on black fly density: interspecific interactions outweigh food limitation. *Journal of the North American Benthological Society* 7:188-196.
- Hershey, A.E., A.L. Hiltner, M.A.J. Hullah, M.C. Miller, R.J. Vestal, M.A. Lock, S. Rundle and B.J. Peterson. 1988. Nutrient influence on a stream grazer: *Orthocladus* microcommunities respond to nutrient input. *Ecology* 69:1383-1392.
- Hershey, A.E., and M.E. McDonald. 1985. Diet and digestion rates of slimy sculpin, *Cottus cognatus*, in an Alaskan arctic lake. *Canadian Journal of Fisheries and Aquatic Sciences* 42:483-487.
- Hershey, A.E., J. Pastor, B.J. Peterson and G.W. Kling. 1993. Stable isotopes resolve the drift paradox for *Baetis* mayflies in an arctic river. *Ecology* 74:2315-2325.
- Hershey, A.E., and B.J. Peterson. 1996. Stream food webs. In: F. R. Hauer and G. A. Lamberti (eds.). *Methods in stream ecology*. Academic Press, San Diego, CA.
- Hilbert, D.W., T.I. Prudhomme and W.C. Oechel. 1987. Response of tussock tundra to elevated carbon dioxide regimes: analysis of ecosystem CO₂ flux through nonlinear modeling. *Oecologia* 72:466-472.
- Hill, A.R. 1988. Factors influencing nitrate depletion in a rural stream. *Hydrobiologia* 160:111-122.
- Hiltner, A.L., and A.E. Hershey. 1992. Blackfly (Diptera: *Simuliidae*) responses to phosphorus enrichment of an arctic tundra stream. *Hydrobiologia* 240:259-266.
- Hinterleitner-Anderson, D., A.E. Hershey and J.A. Schuldt. 1992. The effects of river fertilization on mayfly (*Baetis* sp.) drift patterns and population density in an arctic river. *Hydrobiologia* 240:247-258.
- Hinzman, L.D., and D.L. Kane. 1991. Snow hydrology of a headwater arctic basin 2, conceptual analysis and computer modeling. *Water Resources Research* 27:1111-1121.
- Hinzman, L.D., and D.L. Kane. 1992. Potential response of an arctic watershed during a period of global warming. *Journal of Geophysical Research—Atmospheres* 97:2811-2820.
- Hinzman, L.D., D.L. Kane, C.S. Benson and K.R. Everett. 1991. Hydrologic and thermal properties of the active layer in the Alaskan arctic. *Cold Regions Science and Technology*, 19:95-110.
- Hinzman, L.D., D.L. Kane, C.S. Benson and K.R. Everett. 1996. Thermal and hydrologic processes in the Imnavait Creek watershed. In: J. Reynolds and J. Tenhunen (eds.). *Landscape function: implications for ecosystem response to disturbance*. Springer-Verlag, Berlin. 131-154.
- Hinzman, L.D., D.L. Kane and K.R. Everett. 1993. Hillslope hydrology in an arctic setting. Sixth International Conference on Permafrost. 5-9 July 1993, Beijing, China. 267-271.
- Hinzman, L.D., D.L. Kane and R.E. Gieck. 1991. Regional snow ablation in the Alaskan arctic. In: T.D. Prowse and C.S.H. Ommanney (eds.). *Northern hydrology, selected perspectives*. NHRI Symposium No. 6. National Hydrology Research Institute. Saskatoon, Saskatchewan, Canada. 121-140.
- Hinzman, L.D., D.L. Kane, R.E. Gieck and K.R. Everett. 1991. Hydrologic and thermal properties of the active layer in the Alaskan Arctic. *Cold Regions Science and Technology* 19:95-110.

- Hinzman, L.D., D.L. Kane and Z. Zhang, 1995. A spatially distributed hydrologic model for arctic regions. International GEWEX Workshop on Cold-Season/Region Hydrometeorology. Summary Report and Proceedings. 22-26 May 1995, Banff, Alberta, Canada. International GEWEX Project Office Publication, Series No. 15, Washington, D.C. 236-239.
- Hobbie, J.E. (ed.). 1980. Limnology of tundra ponds: Barrow, Alaska. Dowden, Hutchinson and Ross, Stroudsburg, PA. 514 pp.
- Hobbie, J.E. 1984. Polar limnology. In: F.B. Taub (ed.). Lakes and reservoirs. Elsevier Scientific, Amsterdam. 63-105.
- Hobbie, J.E. 1984. The ecology of tundra ponds of the Arctic Coastal Plain: a community profile. U.S. Fish and Wildlife Service FWS/OBS-83/25. 52 pp.
- Hobbie, J.E. 1991. Measuring heterotrophic activity in plankton. In: Methods in microbiology, vol. 22. Academic Press, London. 235-250.
- Hobbie, J.E. 1991. Microbial control of dissolved organic carbon in lakes: research for the future. *Hydrobiologia* 229:169-180.
- Hobbie, J.E. 1993. Arctic ecosystem response to change. *Arctic Research of the United States* 7(2):3-9.
- Hobbie, J.E. 1993. Introduction. In: P.F. Kemp, B.F. Sherr, E.B. Sherr and J.J. Cole (eds.). Handbook of methods in aquatic microbial ecology. Lewis Publishers, Boca Raton, FL. 1-5.
- Hobbie, J.E. (In press). History of limnology in Alaska. In: A. Milner and M.W. Oswood (eds.). Alaskan freshwaters. Springer-Verlag, New York, NY.
- Hobbie, J.E., T.L. Corliss and B.J. Peterson. 1983. Seasonal patterns of bacterial abundance in an arctic lake. *Arctic and Alpine Research* 15:253-259.
- Hobbie, J.E., L.A. Deegan, B.J. Peterson, E.B. Rastetter, G.R. Shaver, G.W. Kling, W.J. O'Brien, F.S. Chapin III, M.C. Miller, G.W. Kipphut, W.B. Bowden, A.E. Hershey and M.E. McDonald. 1995. Long-term measurements at the Arctic LTER site. In: T.M. Powell and J.H. Steele (eds.). Ecological time series. Chapman and Hall, New York, NY. 391-409.
- Hobbie, J.E., and T.E. Ford. 1993. A perspective on the ecology of aquatic microbes. In: T.E. Ford (ed.). Aquatic microbiology: an ecological approach. Blackwell Scientific Publications, Boston, MA. 1-14.
- Hobbie, J.E., and J.V.K. Helfrich III. 1988. The effect of grazing by microprotozoans on production of bacteria. *Archiv für Hydrobiologie* 31:281-288.
- Hobbie, J.E., B.J. Peterson, G.R. Shaver and W.J. O'Brien. 1991. The Toolik Lake Project: terrestrial and freshwater research on change in the Arctic. Proceedings of the International Conference on the Role of Polar Regions in Global Change, Vol. II. University of Alaska Fairbanks. 378-383.
- Hobbie, S.E. (In press). Temperature and plant species control over litter decomposition in Alaska tundra. Ecological Monographs.
- Hobbie, S.E., and F.S. Chapin III. (In press). Winter regulation of tundra litter carbon and nitrogen dynamics. Biogeochemistry.
- Hope, A.S., J.B. Fleming, G. Vourlitis, D.A. Stow, W.C. Oechel and T. Hack. (Submitted). Relating CO₂ fluxes to spectral vegetation indices in tundra landscapes: importance of footprint definition. *Polar Record*.
- Hullar, M.A., M.J. Kaufman and J.R. Vestal. 1986. The effects of nutrient enrichment on the distribution of microbial heterotrophic activity in arctic lakes. *ISME Proceedings* IV. 207-212.
- Hullar, M.A., and J.R. Vestal. 1989. The effects of nutrient limitation and stream discharge on the epilithic community in an arctic stream. *Hydrobiologia* 172:19-26.
- Jeffries, R.L., D.R. Klein and G.R. Shaver. 1994. Herbivores and northern plant communities: reciprocal influences and responses. *Oikos* 71:193-206.
- Johnston, C.J., and G.W. Kipphut. 1988. Microbially mediated Mn(II) oxidation in an oligotrophic lake. *Applied and Environmental Microbiology* 54:1440-1445.
- Johnson, L.C., G.S. Shaver, A.E. Giblin, K.J. Nadelhoffer, E.B. Rastetter, J.A. Laundre and G.L. Murray. (In press). Effects of drainage and temperature on carbon balance of tussock tundra microcosms. *Oecologia*.
- Jordan, M.J., J.E. Hobbie and B.J. Peterson. 1978. Effect of petroleum hydrocarbons on microbial populations in an arctic lake. *Arctic* 31:170-179.
- Kane, D. L. 1993. Meteorological and hydrologic studies in the Alaskan arctic in support of long-term ecological research. In: K. T. Redmond and V. L. Tharp (eds.). Proceedings of the Ninth Annual Pacific Climate (PACLIM) Workshop. April 21-24, 1992, Asilomar, CA. California Department of Water Resources, Technical Report 34. 13-21.
- Kane, D. L. 1993. Northern hydrology and water resources in a changing environment. Impacts of climate change on resource management in the north. Department of Geography, University of Waterloo, Occasional Paper No. 16. 55-67.
- Kane, D. L. 1996. The impact of hydrologic perturbations on arctic ecosystems induced by climate change. In: W. C. Oechel and J. J. Holten (eds.). Global change and arctic terrestrial ecosystems. Springer-Verlag, New York, N.Y.
- Kane, D.L., R.E. Gieck and L.D. Hinzman. 1990. Evapotranspiration from a small Alaskan arctic watershed. Eighth International Northern Research Basins Symposium and Workshop. 26-30 March 1990, Abisko, Sweden.
- Kane, D.L., R.E. Gieck and L.D. Hinzman. 1990. Evapotranspiration from a small Alaskan arctic watershed. *Nordic Hydrology* 21:253-272.
- Kane, D.L., L.D. Hinzman, C.S. Benson and K.R. Everett. 1989. Hydrology of Imnavait Creek, an arctic watershed. *Holarctic Ecology* 12:262-269.
- Kane, D.L., L.D. Hinzman, C.S. Benson and G.E. Liston. 1991. Snow hydrology of a headwater arctic basin 1, physical measurements and process studies. *Water Resources Research* 27:1099-1109.
- Kane, D.L., L.D. Hinzman and E.K. Lilly. 1993. Use of spatially distributed data to model arctic hydrologic processes. Sixth International Conference on Permafrost. 5-9 July 1993, Beijing, China. 326-331.
- Kane, D.L., L.D. Hinzman, M.K. Woo and K.R. Everett. 1992. Hydrology of the arctic: present and future. In: S.F. Chapin III, R. Jeffries, G. Shaver, J. Reynolds and J. Svoboda (eds.). Physiological ecology of arctic plants: implications for climate change. Academic Press, Inc. 35-57.
- Kane, D.L., L.D. Hinzman, H. Yu and D.J. Goering. 1994. The use of SAR satellite imagery to measure active layer moisture contents in arctic Alaska. Tenth International Northern Research Basins Symposium and Workshop. August 28-September 3 1994, Spitsbergen, Norway.
- Kane, D.L., L.D. Hinzman, H. Yu and D.J. Goering. 1996. The use of SAR satellite imagery to measure active layer moisture contents in arctic Alaska. *Nordic Hydrology* 27:25-38.
- Kane, D.L., L.D. Hinzman and J.P. Zarling. 1991. Thermal response of the active layer in a permafrost environment to climatic warming. *Cold Regions Science and Technology* 19:111-122.
- Kane, D. L., W. C. Oechel, T. Crawford, L. D. Hinzman, G. Vourlitis, S. Brooks, R. McMillian, T. Gilmanov, V. Nosov, A. Hope, D. Stow and J. Fleming. 1996. Distribution of CO₂ flux rates across Alaskan arctic landscapes. Second International Scientific Conference on the Global energy and Water Cycle, GEWEX. June 17-21 1996, Washington, D.C. 462-463.

- Kettle, D., and W.J. O'Brien. 1978. Vulnerability of arctic zooplankton to lake trout predation. *Journal of the Fisheries Research Board of Canada* 35:1495-1500.
- Kielland, K. 1994. Amino acid absorption by arctic plants: implications for plant nutrition and nitrogen cycling. *Ecology* 75:2373-2383.
- Kielland, K., and F.S. Chapin III. 1994. Phosphate uptake in arctic plants in relation to phosphate supply: the role of spatial and temporal variability. *Oikos* 70:443-448.
- Kipphut, G.W. 1988. Sediments and organic carbon in an arctic lake. In: E.T. Degens, S. Kempe and A.S. Naidu (eds.). *Transport of carbon and minerals in major world rivers, lakes and estuaries*, Vol. 66. *Mitteilungen aus dem Geologisch-Palaontologischen Institutes, University of Hamburg*. 129-135.
- Kipphut, G.W., and S.C. Whalen. 1992. Access pipes for sampling through thick ice. *Hydrobiologia* 240:267-269.
- Kling, G.W. 1995. Land-water linkages: the influence of terrestrial diversity on aquatic systems. In: C. Korner and F.S. Chapin III (eds.). *The role of biodiversity in arctic and alpine tundra ecosystems*. Springer-Verlag, Berlin. 297-310.
- Kling, G.W., B. Fry and W.J. O'Brien. 1992. Stable isotopes and planktonic trophic structures in arctic lakes. *Ecology* 73:561-566.
- Kling, G.W., G.W. Kipphut and M.C. Miller. 1991. Arctic lakes and streams as gas conduits to the atmosphere: implications for tundra carbon budgets. *Science* 251:298-301.
- Kling, G.W., G.W. Kipphut and M.C. Miller. 1992. The flux of CO₂ and CH₄ from lakes and rivers in arctic Alaska. *Hydrobiologia* 240:23-36.
- Kling, G.W., W.J. O'Brien, M.C. Miller and A.E. Hershey. 1992. The biogeochemistry and zoogeography of lakes and rivers in arctic Alaska. *Hydrobiologia* 240:1-14.
- Klingensmith, K.M., and V. Alexander. 1983. Sediment nitrification, denitrification and nitrous oxide production in a deep arctic lake. *Applied and Environmental Microbiology* 46:1084-1092.
- Kriet, K., B.J. Peterson and T.L. Corliss. 1992. Water and sediment export of the upper Kuparuk River drainage of the North Slope of Alaska. *Hydrobiologia* 240:71-81.
- Kummerow, J., J.N. Mills, B.A. Ellis, S.J. Hastings and A. Kummerow. 1987. Downslope fertilizer movement in arctic tussock tundra. *Holarctic Ecology* 10:312-319.
- Lechowicz, M.J., and G.R. Shaver. 1982. A multivariate approach to the analysis of factorial fertilization experiments in Alaskan arctic tundra. *Ecology* 63:1029-1038.
- Lock, M.A., and T.E. Ford. 1986. Colloidal and dissolved organic carbon dynamics in undisturbed boreal forest catchments: a seasonal study of apparent molecular weight spectra. *Freshwater Biology* 16:187-195.
- Lock, M.A., and T.E. Ford. 1988. Metabolism of dissolved organic matter by attached microorganisms in rivers. *ISME Proceedings IV*. 367-374.
- Lock, M.A., T.E. Ford, D.M. Fiebig, M. C. Miller, M. Hullar, J.R. Vestal and B.J. Peterson. 1989. A biogeochemical survey of rivers and streams in the mountains and foothills province of arctic Alaska. *Archiv für Hydrobiologie* 115:499-521.
- Lock, M.A., T.E. Ford, M. Hullar, M. Kaufman, J.R. Vestal, G.S. Volk and R.M. Ventullo. 1990. Phosphorus limitation in an arctic river biofilm – a whole ecosystem experiment. *Water Research* 24:1545-1549.
- Lopez-Bernal, F.F., P.A. Krenkel and R.R. Ruane. 1977. Nitrification in free-flowing streams. *Progress in Water Technology* 9:821-832.
- Luecke, C., and W.J. O'Brien. 1981. Phototoxicity and fish predation: selective factors in color morphs in *Heterocope*. *Limnology and Oceanography* 26:454-460.
- Luecke, C., and W.J. O'Brien. 1983. Photoprotective pigments in a pond morph of *Daphnia middendorffiana*. *Arctic* 36:365-368.
- Luecke, C., and W.J. O'Brien. 1983. The effect of *Heterocope* predation on zooplankton communities in arctic ponds. *Limnology and Oceanography* 28:267-377.
- Luecke, C., and W.J. O'Brien. 1990. Photoprotective pigmentation of freshwater zooplankton: a phenomenon of extreme environments. In: *Adaptive coloration in invertebrates*. American Society of Zoologists. 101-108.
- Manuel-Faler, C.Y., G.W. Minshall, R.W. Dunn and D.A. Bruns. 1983. *In situ* nitrogen enrichment experiments in two Idaho (U.S.A.) streams. *Environmental Monitoring and Assessment* 4:67-79.
- Marion, G.M. 1996. Elemental mobility through small tundra ecosystems. *Arctic and Alpine Research* 28:339-345.
- Marion, G.M. and C.H. Black. 1987. The effect of time and temperature on nitrogen mineralization in arctic tundra soils. *Soil Sci. Soc. of Am. J.* 51:1501-1508.
- Marion, G.M. and K.R. Everett. 1989. The effect of nutrient and water additions on elemental mobility through small tundra watersheds. *Holarctic Ecology* 12:317-323.
- Marion, G.M., S.J. Hastings, S.F. Oberbauer and W.C. Oechel. 1989. Soil-plant nutrient relationships in a tundra ecosystem. *Holarctic Ecology* 12:296-303.
- Marion, G.M., G.H.R. Henry, P. Molgaard, W.C. Oechel, M.H. Jones and G.L. Vourlitis. 1993. Open-top devices for manipulating field temperatures in tundra ecosystems. In: V.J. Lunardini and S.L. Bowen (eds). *Proceedings, Fourth International Symposium on Thermal Engineering and Science for Cold Regions*. 28 September - 1 October 1993, Hanover, New Hampshire, U.S.A. CRREL Special Report 93-22. 205-210.
- Marion, G.M., P.C. Miller and C.H. Black. 1987. Competition for tracer ¹⁵N in tussock tundra ecosystems. *Holarctic Ecology* 10:230-234.
- Marion, G.M., and W.C. Oechel. 1993. Mid- to late-Holocene carbon balance in arctic Alaska and its implications for future global warming. *The Holocene* 3:193-200.
- Mark, A.F., N. Fetcher, G.R. Shaver and F.S. Chapin III. 1985. Estimated ages of mature tussocks of *Eriophorum vaginatum* along a latitudinal gradient in central Alaska, U.S.A. *Arctic and Alpine Research* 17:1-5.
- Matthes-Sears, U., W.C. Matthes-Sears, S.J. Hastings and W.C. Oechel. 1988. The effects of topography and nutrient status on the biomass, vegetative characteristics, and gas exchange of two deciduous shrubs on an arctic tundra slope. *Arctic and Alpine Research* 20:342-351.
- McDonald, M.E., B.E. Cuker and S.C. Mozley. 1982. Distribution, production and age structure of slimy sculpin (*Cottus cognatus*) in an arctic lake. *Environmental Biology of Fishes* 7:171-176.
- McDonald, M.E., and A.E. Hershey. 1989. Size structure of a lake trout (*Salvelinus namaycush*) population in an arctic lake: influence of angling and implications for fish community structure. *Canadian Journal of Fisheries and Aquatic Sciences* 46:2153-2156.
- McDonald, M.E., and A.E. Hershey. 1992. Shifts in abundance and growth of slimy sculpin in response to changes in the predator population in an arctic Alaskan lake. *Hydrobiologia* 240:219-224.
- McDonald, M.E., A.E. Hershey and W.J. O'Brien. 1992. Cost of predation avoidance in young-of-year lake trout (*Salvelinus namaycush*): growth differential in sub-optimal habitats. *Hydrobiologia* 240:213-218.

- McDonald, M.E., C.A. Tikkanen, R.P. Axler, C.P. Larsen and G. Host. 1995. Fish simulation model (FIS-C): a bioenergetics based model for aquacultural wasteload applications. *Aquacultural Engineering* 14.
- McGraw, J.B., and G.R. Shaver. 1982. Seedling density and seedling survival in Alaskan cottongrass-tussock tundra. *Holarctic Ecology* 5:212-217.
- McKane, R.B., E.B. Rastetter, G.R. Shaver, K.J. Nadelhoffer, A.E. Giblin, J.A. Laundre and F.S. Chapin III. (In press). Effects of experimental changes in CO₂ and climate on carbon storage in arctic tundra. *Ecology*.
- McKane, R.B., E.B. Rastetter, G.R. Shaver, K.J. Nadelhoffer, A.E. Giblin, J.A. Laundre and F.S. Chapin III. (In press). Reconstruction and analysis of historical changes in carbon storage in arctic tundra. *Ecology*.
- McKinley, V.L., T.W. Federle and J.R. Vestal. 1982. Effects of petroleum hydrocarbons on plant litter microbiota in an arctic lake. *Applied and Environmental Microbiology* 43:129-135.
- McKinley, V.L., T.W. Federle and J.R. Vestal. 1983. Improvements in and environmental applications of double vial radiorespirometry for the study of microbial mineralization. *Applied and Environmental Microbiology* 45:255-259.
- McKinley, V.L., and J.R. Vestal. 1982. The effects of acid on plant litter decomposition in an arctic lake. *Applied and Environmental Microbiology* 43:1188-1195.
- McKinley, V.L., and J.R. Vestal. 1991. Mineralization of glucose and lignocellulose by four arctic freshwater sediments in response to nutrient enrichment. *Applied and Environmental Microbiology* 58:1154-1163.
- Meininger, C.A., and P.D. Spatt. 1988. Variation in moss and tardigrade species assemblages in a dust-impacted arctic tundra. *Arctic and Alpine Research* 20:24-30.
- Merrick, G.W., A.E. Hershey and M.E. McDonald. 1991. Lake trout (*Salvelinus namaycush*) control of snail density and size distribution in an arctic lake. *Canadian Journal of Fisheries and Aquatic Sciences* 48:498-502.
- Merrick, G.W., A.E. Hershey and M.E. McDonald. 1992. Salmonid diet and the size, distribution, and density of benthic invertebrates in an arctic lake. *Hydrobiologia* 240:225-234.
- Meyer, J.L., and C. Johnson. 1983. The influence of elevated nitrate concentration on rate of leaf decomposition in a stream. *Freshwater Biology* 13:177-183.
- Meyer, J.L., W.H. McDowell, T.L. Bott, J.W. Elwood, C. Ishizaki, J.M. Melack, B.L. Peckarsky, B.J. Peterson and P.A. Rublee. 1988. Elemental dynamics in streams. *Journal of the North American Benthological Society* 7:410-432.
- Miller, M.C., V. Alexander and R.J. Barsdate. 1978. The effects of oil spills on phytoplankton in an arctic lake and ponds. *Arctic* 31:192-218.
- Miller, M.C., P. DeOliveira and G.G. Gibeau. 1992. Epilithic diatom community response to years of PO₄ fertilization: Kuparuk River, Alaska (68°N Lat.). *Hydrobiologia* 240:103-120.
- Miller, M.C., G.R. Hater., P. Spatt, P. Westlake and D. Yeakel. 1986. Primary production and its control in Toolik Lake, Alaska. *Archiv für Hydrobiologie Supplement* 74:97-131.
- Miller, M.C., G.R. Hater and J.R. Vestal. 1978. Effects of Prudhoe crude oil on carbon assimilation by planktonic algae in an arctic pond. In: D.D. Adriano and I.L. Brisbin (eds.). *Environmental chemistry and cycling processes*. U.S. Department of Energy, Washington, D.C. 833-850.
- Miller, M.C., and J.E. Hobbie. 1976. R.A.T.E. – The Toolik Lake Program. *Arctic Bulletin* 2:161-164.
- Miller, P.C., P.M. Miller, M. Blake-Jacobson, F.S. Chapin III, K. R. Everett, D.W. Hilbert, J. Kummerow, A.E. Linkins, G. M. Marion, W.C. Oechel, S.W. Roberts and L. Stuart. 1984. Plant-soil processes in *Eriophorum vaginatum* tussock tundra in Alaska: a systems modeling approach. *Ecological Monographs* 54:361-405.
- Miller, M.C., and J.P. Reed. 1975. Benthic metabolism of arctic coastal ponds, Barrow, Alaska. *Verh. Int. Verein. Limnol.* 19:459-465.
- Miller, M.C., and J.R. Stout. 1989. Variability of macroinvertebrate community composition in an arctic and subarctic stream. *Hydrobiologia* 172:111-127.
- Miller, M.C., J.R. Stout and V. Alexander. 1986. Effects of a controlled under-ice oil spill on invertebrates of an arctic and a subarctic stream. *Environmental Pollution* 42:99-132.
- Miller, M.C., J.R. Vestal, S. Mozley, M. Butler and J. E. Hobbie. 1977. Effects of Prudhoe crude oil on coastal tundra ponds. In: *Energy/Environment II*. U.S. Environmental Protection Agency (EPA600/977012), Washington, D.C. 521-529.
- Mooney, H.A., B.G. Drake, R.J. Luxmoore, W.C. Oechel and L.F. Pitelka. 1991. Predicting ecosystem responses to elevated CO₂ concentrations. *BioScience*. 41:96-104.
- Mozley, S.C. 1979. Neglected characters in larval morphology as tools in taxonomy and phylogeny of *Chironomidae*. *Entomologica Scandinavica Supplement* 10:27-36.
- Mulholland, P.J., A.D. Steinman and J.W. Elwood. 1990. Measurement of phosphorus uptake length in streams: comparison of radiotracer and stable PO₄ releases. *Canadian Journal of Fisheries and Aquatic Sciences* 47:2351-2357.
- Nadelhoffer, K.J., A.E. Giblin, G.R. Shaver and J.A. Laundre. 1991. Effects of temperature and substrate quality on element mineralization in six arctic soils. *Ecology* 72:242-253.
- Nadelhoffer, K.J., A.E. Linkins, A.E. Giblin and G.R. Shaver. 1992. Microbial processes and plant nutrient availability in arctic soils. In: F.S. Chapin III, R. Jefferies, R. Reynolds, G. Shaver and J. Svoboda (eds.). *Arctic ecosystems in a changing climate: an ecophysiological perspective*. Academic Press, New York, NY. 281-300.
- Nadelhoffer, K.J., G.R. Shaver, A.E. Giblin, L. Johnson and R. McKane. 1996. ¹⁵N natural abundances and N use by tundra plants. *Oecologia*.
- Nadelhoffer, K.J., G.R. Shaver, A.E. Giblin and E.B. Rastetter. 1996. Potential impacts of climate change on nutrient cycling, recomposition and productivity in arctic ecosystems. In: W.C. Oechel and J.J. Holten (eds.). *Global change and arctic terrestrial ecosystems*. Springer-Verlag, New York, NY.
- Naiman, R.J. 1983. A geomorphic approach for examining the role of periphyton in large watersheds. 191-198.
- Nassar, R., R. Stewart and C. Tate. 1991. Stochastic analysis of the dynamic of nitrogen concentration in a stream ecosystem. *Ecological Modelling* 56:33-45.
- Newbold, J.D., J.W. Elwood, M.S. Schulze, R.W. Start and J.C. Barmeier. 1983. Continuous ammonium enrichment of a woodland stream: uptake kinetics, leaf decomposition, and nitrification. *Freshwater Biology* 13:193-204.
- O'Brien, W.J. 1988. The effect of container size on the feeding rate of *Heterocope septentrionalis*: a freshwater predaceous copepod. *Plankton Research* 10:313-317.
- O'Brien, W.J. (In press). Benthic animal distributions among Alaskan North Slope lakes. *Hydrobiologia*.

- O'Brien, W.J., M. Bahr, A. Hershey, J. Hobbie, G. Kipphut, G. Kling, H. Kling, M. McDonald, M. Miller, P. Rublee and R. Vestal. (In press). The limnology of Toolik Lake. In: A. Milner and M.W. Oswood (eds.). Alaskan freshwaters. Springer-Verlag, New York, NY.
- O'Brien, W.J., H.I. Browman and B.I. Evans. 1990. Search strategies for foraging animals. *American Scientist* 78:152-160.
- O'Brien, W.J., C. Buchanan and J. Haney. 1979. Arctic zooplankton community structure: exceptions to some general rules. *Arctic* 32:237-247.
- O'Brien, W.J., and B.I. Evans. 1991. Saltatory search behavior in five species of planktivorous fish. *Verh. Int. Verein. Limnol.* 24:2371-2376.
- O'Brien, W.J., and B.I. Evans. 1992. Simulation model of the planktivorous feeding of arctic grayling: laboratory and field verification. *Hydrobiologia* 240:235-246.
- O'Brien, W.J., A. Hershey, J. Hobbie, M.A. Hullar, G.W. Kipphut, M.C. Miller, B. Moller and J.R. Vestal. 1992. Control mechanisms of arctic lake ecosystems: a limnocorral experiment. *Hydrobiologia* 240:143-188.
- O'Brien, W.J., and D. Kettle. 1981. A zooplankton bioassay chamber for lab and field use. *Plankton Research* 3:561-566.
- O'Brien, W.J., D. Kettle and H. Riessen. 1979. Helmets and invisible armor: structures reducing predation from tactile and visual planktivores. *Ecology* 60:287-294.
- O'Brien, W.J., and C. Luecke. 1988. The coexistence of a predaceous copepod and a daphniid: weeding and gardening in the arctic. *Verh. Int. Verein. Limnol.* 23:2069-2074.
- O'Brien, W.J., H. Riessen, D. Schmidt, D. Kettle and D. Wright. 1980. Dimorphic *Daphnia longiremis*: predator and competitive interactions. In: W.C. Kerfoot (ed.). *Evolution and ecology of zooplankton communities*. University Press of New England, Hanover, NH. 497-505.
- O'Brien, W.J., and D. Schmidt. 1979. Arctic *Bosmina* morphology and copepod predation. *Limnology and Oceanography* 24:564-568.
- O'Brien, W.J., and J.J. Showalter. 1993. Effects of current velocity and suspended debris on the drift feeding of arctic grayling. *Transactions of the American Fisheries Society* 122:609-615.
- Oberbauer, S.F., W. Cheng, B. Ostendorf, A. Sala, R. Gebauer, C.T. Gillespie, R.A. Virginia and J.D. Tenhunen. 1996. Landscape patterns of carbon gas exchange in tundra ecosystems. In: J.F. Reynolds and J.D. Tenhunen (eds.). *Landscape function and disturbance in the Arctic*. Ecological Studies Series vol. 120, Springer Verlag, 223-257.
- Oberbauer S.F. and T.E. Dawson. 1992. Water relations of vascular plants. In: F.S. Chapin III, R.L. Jeffries, J.F. Reynolds, G.R. Shaver and J. Svoboda. (eds.). *Arctic ecosystems in a changing climate: an ecophysiological perspective*. Academic Press, New York, NY. 259-280.
- Oberbauer, S.F., C.T. Gillespie, W. Cheng, R. Gebauer, A. Sala-Serra and J.D. Tenhunen. 1992. Environmental effects on CO₂ efflux from riparian tundra in the northern foothills of the Brooks Range, Alaska, USA. *Oecologia* 92:568-577.
- Oberbauer, S.F., C.T. Gillespie, W. Cheng, A. Sala, R. Gebauer, J.D. Tenhunen, 1996. Diurnal and seasonal patterns of ecosystem CO₂ efflux from upland tundra in the foothills of the Brooks Range, Alaska. *Arctic and Alpine Research* 28:326-336.
- Oberbauer, S.F., S.J. Hastings, J.L. Beyers and W.C. Oechel. 1989. Comparative effects of downslope water and nutrition movement on plant nutrition, photosynthesis, and growth in Alaskan tundra. *Holarctic Ecology* 12:324-334.
- Oberbauer, S.F., and W.C. Oechel. 1989. Maximum CO₂ assimilation rates of vascular plants on an Alaskan arctic tundra slope. *Holarctic Ecology* 12:312-316.
- Oberbauer, S., W.C. Oechel and G.H. Riechers. 1986. Soil respiration of Alaskan tundra at elevated atmospheric CO₂ concentration. *Plant and Soil* 46:145-148.
- Oberbauer, S.F., N. Sionit, S.J. Hastings and W.C. Oechel. 1986. Effects of CO₂ enrichment and nutrition on growth, photosynthesis and nutrient concentration of Alaskan tundra species. *Canadian Journal of Botany* 64:2993-2998.
- Oberbauer, S. F., J.D. Tenhunen and J.F. Reynolds. 1991. Environmental effects on CO₂ efflux from water track and tussock tundra in arctic Alaska, U.S.A. *Arctic and Alpine Research* 23:162-169.
- Oechel, W.C. 1989. Nutrient and water flux in a small arctic watershed: an overview. *Holarctic Ecology* 12:229-237.
- Oechel, W.C. 1993. Understanding the impact of climatic change on northern ecosystems. In: J.I. Holten, G. Paulsen and W.C. Oechel (eds). *Impacts of climate change on natural ecosystems with emphasis on boreal and arctic/alpine areas*. Norwegian Institute for Nature Research, Trondheim. 5-7.
- Oechel, W.C., and W.D. Billings. 1992. Anticipated effects of global change on carbon balance of arctic plants and ecosystems. In: F.S. Chapin III, R. Jeffries, R. Reynolds, G. Shaver and J. Svoboda (eds.). *Arctic Physiological Processes in a Changing Climate: an ecophysiological perspective*. Academic Press, New York, NY. 139-168.
- Oechel, W.C., S. Cowles, N. Grulke, S.J. Hastings, B. Lawrence, T. Prudhomme, G. Riechers, B. Strain, D. Tissue and G. Vourlitis. 1994. Transient nature of CO₂ fertilization in arctic tundra. *Nature* 371:500-503.
- Oechel, W.C., S.J. Hastings, M. Jenkins, G. Riechers, N. Grulke and G. Vourlitis. 1993. Recent change of arctic tundra ecosystems from a carbon sink to a source. *Nature* 361:520-526.
- Oechel, W.C., and G.H. Riechers. 1986. Impacts of increasing CO₂ on natural vegetation, particularly the tundra. *Proceedings of climate-vegetation workshop*. 27-29 January 1986, NASA/Goddard Space Flight Center, Greenbelt, MD. 36-42.
- Oechel, W.C., G. Riechers, W.T. Lawrence, T.I. Prudhomme and N. Grulke. 1992. CO₂LT, a closed, null-balance system for long-term in situ ecosystem manipulation and measurement of CO₂ level, CO₂ flux, and temperature. *Functional Ecology* 6:86-100.
- Oechel, W.C., and B. Strain. 1985. Response of native species and ecosystems. In: *Direct effects of increasing carbon dioxide on vegetation*. Department of Energy DOE/ER-0238.
- Oechel, W.C., and G. L. Vourlitis. 1994. The effects of climate change on arctic tundra ecosystems. *Trends in Ecology and Evolution* 9:324-329.
- Oechel, W.C., and G. Vourlitis. 1995. Effect of global change on carbon storage in cold soils. In: R. Lal, J. Kimble, E. Levine and B.A. Stewart (eds.). *Advances in soil science: soils and global change*. CRC Press, Inc., Boca Raton, FL. 117-129.
- Oechel, W.C., and G. Vourlitis. (In press). Microcosms in natural experiments. *Science Acclimation*.
- Oechel, W.C., G.L. Vourlitis, S.J. Hastings, S. Cowles, N. Grulke, G. Riechers and W. Lawrence. 1992. In situ acclimation of arctic tundra to elevated atmospheric CO₂. *Workshop on the Design and Execution of Experiments on CO₂ Enrichment*. 26-30 October 1992, Weidenberg.
- Oswood, M.W., K.R. Everett and D.M. Schell. 1989. Some physical and chemical characteristics of an arctic beaded stream. *Holarctic Ecology* 12:290-2295.

- Paul, B.J., and H.C. Duthie. 1989. Nutrient cycling in the epilithon of running waters. *Canadian Journal of Botany* 67:2302-2309.
- Peterson, B.J. 1993. The costs and benefits of collaborative research. *Estuaries* 16:913-918.
- Peterson, B.J., T.L. Corliss, K. Kriet and J.E. Hobbie. 1992. Nitrogen and phosphorus concentration and export for the upper Kuparuk River on the North Slope of Alaska in 1980. *Hydrobiologia* 240:61069.
- Peterson, B.J., L. Deegan, J. Helfrich, J.E. Hobbie, M. Hullar, B. Moller, T.E. Ford, A. Hershey, A. Hiltner, G. Kipphut, M.A. Lock, D.M. Fiebig, V. McKinley, M.C. Miller, J.R. Vestal, R. Ventullo and G. Volk. 1993. Biological response of a tundra river to fertilization. *Ecology* 74:653-672.
- Peterson, B.J., B. Fry, L. Deegan, A.E. Hershey and D.M. Schell. 1992. Trophic significance of epilithic algal production in a fertilized tundra river ecosystem. *Limnology and Oceanography* 38:872-878.
- Peterson, B.J., J.E. Hobbie and T.L. Corliss. 1986. Carbon flow in a tundra stream ecosystem. *Canadian Journal of Fisheries and Aquatic Sciences* 43:1259-1270.
- Peterson, B.J., J.E. Hobbie, T.L. Corliss and K. Kriet. 1983. A continuous-flow periphyton bioassay: tests of nutrient limitation in a tundra stream. *Limnology and Oceanography* 28:583-591.
- Peterson, B.J., J.E. Hobbie and J.F. Haney. 1978. *Daphnia* grazing on natural bacteria. *Limnology and Oceanography* 23:1039-1044.
- Peterson, B.J., J.E. Hobbie, A.E. Hershey, M.A. Lock, T.E. Ford, J.R. Vestal, V.L. McKinley, M.A.J. Hullar, M.C. Miller, R.M. Ventullo and G.S. Volk. 1985. Transformation of a tundra river from heterotrophy to autotrophy by addition of phosphorus. *Science* 229:1383-1386.
- Prudhomme, T.I., W.C. Oechel, S.J. Hastings and W.T. Lawrence. 1982. Net ecosystem gas exchange at ambient and elevated carbon dioxide concentrations in tussock tundra at Toolik Lake, Alaska: an evaluation of methods and initial results. In: J.H. McBeath (ed.). The potential effects of carbon dioxide-induced climatic changes in Alaska. School of Agriculture and Land Management, University of Alaska. Misc. Publication 83-1. 155-162.
- Rastetter, E.B. 1996. Validating models of ecosystem response to global change. *Bioscience* 46:190-198.
- Rastetter, E.B., G.I. Agren and G.R. Shaver. (In press). Responses to increased CO₂ concentration in N-limited ecosystems: application of a balanced-nutrition, coupled-element-cycles model. *Ecological Applications*.
- Rastetter, E.B., A.W. King, B.J. Cosby, G.M. Hornberger, R.V. O'Neill and J.E. Hobbie. 1992. Aggregating fine-scale ecological knowledge to model coarser-scale attributes of ecosystems. *Ecological Applications* 2:55-70.
- Rastetter, E. B., R.B. McKane, G.R. Shaver and J.M. Melillo. 1992. Changes in C storage by terrestrial ecosystems: how C-N interactions restrict responses to CO₂ and temperature. *Water, Air, and Soil Pollution* 64:327-344.
- Rastetter, E.B., R.B. McKane, G.R. Shaver and K.J. Nadelhoffer. 1996. Analysis of CO₂, temperature, and moisture effects on carbon storage in Alaskan arctic tundra using a general ecosystem model. In: W.C. Oechel and J. Holten (eds.). *Global change and terrestrial ecosystems*. Springer-Verlag, New York, NY.
- Rastetter, E.B., M.G. Ryan, G.R. Shaver, J.M. Melillo, K.J. Nadelhoffer, J.E. Hobbie and J.D. Aber. 1991. A general biogeochemical model describing the responses of the C and N cycles in terrestrial ecosystems to changes in CO₂, climate and N deposition. *Tree Physiology* 9:101-126.
- Rastetter, E.B., and G.R. Shaver. 1992. A model of multiple element limitation for acclimating vegetation. *Ecology* 73:1157-1174.
- Rastetter, E.B., and G.R. Shaver. 1995. Functional redundancy and process aggregation: linking ecosystems to species. In: C.G. Jones, and J.H. Lawton (eds.). *Linking species and ecosystems*. Chapman and Hall, New York, NY. 215-223.
- Riessen, H., and W.J. O'Brien. 1980. Re-evaluation of the taxonomy of *Daphnia longiremis* Sars, 1862 (Crustacea: Cladocera): description of a new morph from Alaska. *Crustaceana* 38:1-11.
- Rovaneck, R.J., D.L. Kane and L.D. Hinzman. 1993. Improving estimates of snowpack water equivalent using double sampling. 50th Eastern Snow Conference, Quebec City, Canada. 157-164.
- Rovaneck, R.J., L.D. Hinzman and D.L. Kane. 1996. Hydrology of a tundra wetland complex on the Alaskan arctic coastal plain. *Arctic and Alpine Research* 28.
- Rublee, P.A. 1992. Community structure and bottom-up regulation of heterotrophic microplankton in arctic LTER lakes. *Hydrobiologia* 240:133-142.
- Ryder, R.A., and J. Pesendorfer. 1989. Large rivers are more than flowing lakes: a comparative review. Contribution No. 87-07, Fisheries Branch, Ontario Ministry of Natural Resources, Thunder Bay, Ontario.
- Schell, D.M., and B. Barnett. 1996. Carbon dynamics in arctic Alaskan tundra. In: J. Reynolds and J. Tenhunen. *Landscape function and disturbance in arctic tundra: a case study in arctic tundra*. Springer-Verlag, New York, NY.
- Schell, D.M., and P.J. Ziemann. 1989. Natural carbon isotope tracers in arctic aquatic food webs. In: P. Rundel, J.R. Ehleringer and K.A. Nagy (eds.). *Stable isotopes in ecological research*. Springer-Verlag, New York, NY.
- Schmidt, D., and W.J. O'Brien. 1982. Planktivorous feeding ecology of arctic grayling (*Thymallus arcticus*). *Canadian Journal of Fisheries and Aquatic Sciences* 39:475-482.
- Shaver, G.R. 1981. Mineral nutrition and leaf longevity in an evergreen shrub, *Ledum palustre* ssp. *decumbens*. *Oecologia* 49:362-365.
- Shaver, G.R. 1983. Mineral nutrition and leaf longevity in *Ledum palustre*: the role of individual nutrients and the timing of leaf mortality. *Oecologia* 56:160-165.
- Shaver, G.R. 1986. Woody stem production in Alaskan tundra shrubs. *Ecology* 67:660-669.
- Shaver, G.R. 1995. Plant functional diversity and resource control of primary production in Alaskan arctic tundras. In: C. Korner and F.S. Chapin III (eds.). *Arctic and alpine biodiversity: patterns, causes, and ecosystem consequences*. Springer-Verlag, Berlin. 199-212.
- Shaver, G.R. 1996. Carbon dynamics in arctic Alaskan tundra. In: J. Reynolds and J. Tenhunen (eds.). *Landscape function and disturbance in arctic tundra: a case study in arctic tundra*. Springer-Verlag, New York, NY.
- Shaver, G.R. 1996. Integrated research in northern Alaska, 1947-1990. In: J. Reynolds and J. Tenhunen. *Landscape function and disturbance in arctic tundra: a case study in arctic tundra*. Springer-Verlag, New York, NY.
- Shaver, G.R., W.D. Billings, F.S. Chapin III, A.E. Giblin, K.J. Nadelhoffer, W.C. Oechel and E.B. Rastetter. 1992. Global change and the carbon balance of arctic ecosystems. *Bioscience* 42:433-441.
- Shaver, G.R., and F.S. Chapin III. 1984. Limiting factors for plant growth in northern ecosystems. In: *Future directions for research in Nouveau-Quebec*. McGill Subarctic Research Paper No. 39. McGill University, Montreal. 49-60.
- Shaver, G.R., and F.S. Chapin III. 1986. Effect of NPK fertilization on production and biomass of Alaskan tussock tundra. *Arctic and Alpine Research* 18:261-268.

- Shaver, G.R., and F.S. Chapin III. 1991. Production biomass relationships and element cycling in contrasting arctic vegetation types. *Ecological Monographs* 61:1-31.
- Shaver, G.R., and F.S. Chapin III. 1995. Long-term responses to factorial NPK fertilizer treatment by Alaskan wet and moist tundra sedge species. *Ecography* 18:259-275.
- Shaver, G.R., F.S. Chapin III and B.L. Gartner. 1986. Factors limiting growth and biomass accumulation in *Eriophorum vaginatum* L. in Alaskan tussock tundra. *Journal of Ecology* 74:257-278.
- Shaver, G.R., N. Fetcher and F.S. Chapin III. 1986. Growth and flowering in *Eriophorum vaginatum*: annual and latitudinal variation. *Ecology* 67:1524-1525.
- Shaver, G.R., B.L. Gartner, F.S. Chapin III and A.E. Linkins. 1983. Revegetation of arctic disturbed sites by native tundra plants. Proceedings of the 4th International Conference on Permafrost. National Academy Press, Washington, D.C. 1133-1138.
- Shaver, G.R., A.E. Giblin, K.J. Nadelhoffer and E.B. Rastetter. 1996. Plant functional types and ecosystem change in arctic. In: T. Smith, H. Shugart and I. Woodward (eds.). *Plant functional types*. Cambridge University Press, Cambridge.
- Shaver, G.R., and J. Kummerow. 1992. Phenology, resource allocation, and growth of arctic vascular plants. In: F.S. Chapin III, R. Jefferies, R. Reynolds, G. Shaver and J. Svoboda (eds.). *Arctic ecosystems in a changing climate: an ecophysiological perspective*. Academic Press, New York, NY. 193-212.
- Shaver, G.R., J.A. Laundre, A.E. Giblin and K.J. Nadelhoffer. (In press). Changes in vegetation biomass, primary production, and species composition along a riverside toposequence in arctic Alaska. *Arctic and Alpine Research*.
- Shaver, G.R., and M.J. Lechowicz. 1985. A multivariate approach to plant mineral nutrition: dose-response relationships and nutrient dominance in factorial experiments. *Canadian Journal of Botany* 63:2138-2143.
- Shaver, G.R., K.J. Nadelhoffer and A.E. Giblin. 1990. Biogeochemical diversity and element transport in a heterogeneous landscape, the North Slope of Alaska. In: M.G. Turner and R.H. Gardner (eds.). *Quantitative methods in landscape ecology*. Springer-Verlag, New York, NY. 105-126.
- Spart, P.D., and M.C. Miller. 1981. Growth conditions and vitality of *Sphagnum* tundra community along the Alaska Pipeline Haul Road. *Arctic* 34:48-54.
- Stewart, W.D.P., T. Preston, H.G. Peterson and N. Christofis. 1982. Nitrogen cycling in eutrophic freshwaters. *Philosophical Transactions of the Royal Society of London. Series B - Biological Sciences* 296:491-509.
- Stone, R. 1994. Rustic site draws a crowd to monitor global warming. *Science* 266:360-361.
- Strain, B.R., L.H. Allen, Jr., D. Baldocchi, F. Bazzaz, J. Burke, R. Dahlman, T. Denmead, G. Hendrey, A. McLeod, J. Melillo, W. Oechel, P. Risser, H. Rogers, J. Rozema and R. Wright. 1991. Available technologies for field experimentation with elevated CO₂ in global change research. In: H.A. Mooney (ed.). *Ecosystem experiments*. SCOPE 45. John Wiley & Sons Ltd. 245-261.
- Sugai, S.F., and G.W. Kipphut. 1992. The influence of light and nutrient addition upon the sediment chemistry of iron in an arctic lake. *Hydrobiologia* 240:91-101.
- Tenhunen, J.D. C.T. Gillespie, S.F. Oberbauer, A. Sala and S. Whalen. 1995. Climate effects on the carbon balance of tussock tundra in the Philip Smith Mountains, Alaska. *Flora* 190:273-283.
- Tenhunen, J.D., O.L. Lange, S. Hahn, R. Siegwolf and S.F. Oberbauer. 1992. The ecosystem role of poikilohydric tundra plants. In: F.S. Chapin III, R.L. Jefferies, J.F. Reynolds, G.R. Shaver and J. Svoboda (eds.) *Arctic ecosystems in a changing climate*. Academic Press, San Diego, CA. 213-238.
- Tenhunen, J. D., R. Siegwolf and S.F. Oberbauer. 1994. Effects of phenology, physiology, and gradients in community composition, structure, and microclimate on tundra CO₂ exchange. In: E.-D. Schulze and M. M. Caldwell (eds.). *Ecophysiology of photosynthesis*. Springer Verlag, Berlin. 431-460.
- Tissue, D.L. and W.C. Oechel. 1987. Physiological response of *Eriophorum vaginatum* to field elevated CO₂ and temperature in the Alaskan tussock tundra. *Ecology* 68:401-410.
- Vestal, J.R., and J.E. Hobbie. 1988. Microbial adaptations to extreme environments. In: J.E. Hobbie and J.M. Lynch (eds.). *Microorganisms in action*. Blackwell Scientific, Oxford. 193-206.
- Villasenor, J.D., D.R. Fätland and L.D. Hinzman. 1993. Change detection on Alaska's North Slope using repeat-pass ERS-1 SAR images. *IEEE Transactions on Geoscience and Remote Sensing* 31:227-236.
- Vourlitis, G.L., W.C. Oechel, S.J. Hastings and M.A. Jenkins. 1993. A system for measuring in situ CO₂ and CH₄ flux in unmanaged ecosystems: an arctic example. *Functional Ecology* 7:369-379.
- Vourlitis, G.L., W.C. Oechel, S.J. Hastings and M.A. Jenkins. 1993. The effect of soil moisture and thaw depth on methane flux from wet coastal tundra ecosystems on the north slope of Alaska. *Chemosphere* 26:329-338.
- Walker, M.D. 1989. Microhabitat preferences of *Dactylina arctica* and *D. beringica* on pingos in northern Alaska. *Bryologist* 92:467-472.
- Walker, M.D., and D.A. Walker. 1991. History and pattern of disturbance in Alaskan arctic terrestrial ecosystems: a hierarchical approach to analyzing landscape change. *Journal of Applied Ecology* 28:244-276.
- Walker, M.D., D.A. Walker and K.E. Everett. 1989. Wetland soils and vegetation, arctic foothills, Alaska. Biological Report 89, U.S. Fish and Wildlife Service. 102 pp.
- Walker, M.D., D.A. Walker and K.R. Everett. 1989. Wetland soils and vegetation, arctic foothills, Alaska. Report, U.S. Department of Energy. 89 pp.
- Walker, M.D., D.A. Walker, K.R. Everett and S.K. Short. 1991. Slope vegetation on south-facing slopes of pingos, central Arctic Coastal Plain, Alaska, U.S.A. *Arctic and Alpine Research* 23:170-188.
- Whalen, S.C., and V. Alexander. 1984. Diel variations in inorganic carbon and nitrogen uptake by phytoplankton in an arctic lake. *Journal of Plankton Research* 6:571-590.
- Whalen, S.C., and V. Alexander. 1984. Influence of temperature and light on rates of inorganic nitrogen transport by algae in an arctic lake. *Canadian Journal of Fisheries and Aquatic Sciences* 41:1310-1318.
- Whalen, S.C., and V. Alexander. 1986. Chemical influences on ¹⁴C and ¹⁵C primary production in an arctic lake. *Polar Biology* 5:211-219.
- Whalen, S.C., and V. Alexander. 1986. Seasonal inorganic carbon and nitrogen transport by phytoplankton in an arctic lake. *Canadian Journal of Fisheries and Aquatic Sciences* 43:1177-1186.
- Whalen, S.C., and J.C. Cornwell. 1985. Nitrogen, phosphorus and inorganic carbon cycling in an arctic lake. *Canadian Journal of Fisheries and Aquatic Sciences* 42:797-808.
- Whalen, S.C., J.C. Cornwell and V. Alexander. 1988. Comparison of chemical and biological N budgets in an arctic lake: implications for phytoplankton productivity. *Mitteilungen auf dem Geologisch-Palaontologischen Institut, University of Hamburg. SCOPE/UNEP Sonderband*. 99-115.
- Whalen, S.C., and W.S. Reeburgh. 1990. Consumption of atmospheric methane by tundra soils. *Nature* 346:160-162.

Theses

- Buchanan, C. 1978. Arctic investigations of some factors controlling the vertical distributions and swimming activities of zooplankton. Ph.D. thesis, University of New Hampshire. 103 pp.
- Butler, M.G. 1980. The population ecology of some arctic Alaskan Chironomidae. Ph.D. thesis, University of Michigan, Ann Arbor. 157 pp.
- Cornwell, J.C. 1983. Geochemistry of manganese, iron and phosphorus in an arctic lake. Ph.D. thesis, University of Alaska Fairbanks. 234 pp.
- Cuker, B.E. 1978. Ecology of *Hydra* in an arctic Alaskan lake. M.S. thesis, University of Michigan, Ann Arbor. 71 pp.
- Cuker, B.E. 1981. Control of epilithic community structure in an arctic lake by vertebrate predation and invertebrate grazing. Ph.D. thesis, North Carolina State University, Raleigh. 96 pp.
- Evans, B.I. 1986. Strategies and tactics of search behavior in salmonid and centrarchid planktivorous fish. Ph.D. thesis, University of Kansas. 83 pp.
- Federle, T.W. 1981. The processes and control of the microbial colonization and decomposition of plant litter in an arctic lake. Ph.D. thesis, University of Cincinnati. 133 pp.
- Fiebig, D.M. 1988. Riparian zone and streamwater chemistries and organic matter immobilization at the stream-bed interface. M.S. thesis, University of Wales, Bangor. 311 pp.
- Ford, T.E. 1984. A study of dissolved and colloidal organic carbon in rivers and their contribution to benthic microbial metabolism. Ph.D. thesis, University College of North Wales. 169 pp.
- Galarowicz, T. L. 1994. Effects of slimy sculpin (*Cottus cognatus*) removal on sculpin and chironomid (Diptera: Chironomidae) populations in an arctic lake. M. S. Thesis, University of Minnesota, Duluth.
- Gartner, B.L. 1982. Controls over regeneration of tundra graminoids in a natural and man-disturbed site in arctic Alaska. M.S. thesis, University of Alaska Fairbanks. 123 pp.
- Gibeau, G.G. 1990. Epilithic algal response to fertilization and grazer activity in an arctic river. M.S. thesis, University of Cincinnati.
- Goyke, A. P. 1990. Effects of fish predation on chironomid (Diptera: Chironomidae) communities in arctic lakes. M. S. Thesis, University of Minnesota, Duluth.
- Hanson, K. L. 1993. A comparison of slimy sculpin (*Cottus cognatus*) populations in arctic lakes with implications for the role of piscivorous predators. M. S. Thesis, University of Minnesota, Duluth.
- Harrison, J. 1995. Young-of-the-year arctic grayling (*Thymallus arcticus*) metabolism: scaling with size, temperature and flow. Senior Honors Thesis, Brown University. 31 p.
- Hershey, A.E. 1980. Chironomid community structure in an arctic lake: the role of a predatory chironomid. M.S. thesis, North Carolina State University, Raleigh. 100 pp.
- Hershey, A.E. 1983. Benthic community structure in an arctic lake: fish predation, foraging strategies, and prey refugia. Ph.D. thesis, North Carolina State University, Raleigh. 108 pp.
- Hiltner, A.L. 1985. Response of two black fly species (Diptera: Simuliidae) to phosphorus enrichment of an arctic tundra stream. M.S. thesis, University of Wisconsin, Madison.
- Hinterleitner-Anderson, D. L. 1990. The effects of river fertilization on mayfly drift patterns and population density in an arctic ecosystem. M. S. Thesis, University of Minnesota, Duluth.
- Hinzman, L.D. 1990. The interdependence of the thermal and hydrologic processes of an arctic watershed and their response to climatic change. Ph.D. Thesis. University of Alaska Fairbanks. 403 pp.
- Hullar, M.A.J. 1986. The effects of nutrient enrichment and light regimes on the epilithic microbiota of an oligotrophic arctic river. M.S. thesis, University of Cincinnati. 100 pp.
- Hobbie, S.E. 1995. The effects of increased temperature on tundra plant community composition the consequences for ecosystem processes. Ph.D. thesis, University of California, Berkeley.
- Johnston, C.J. 1986. Microbially mediated Mn(II) oxidation in an oligotrophic arctic lake. M.S. thesis, University of Alaska Fairbanks. 71 pp.
- Jorgenson, M.T. 1986. Biophysical factors influencing the geographic variability of soil heat flux near Toolik Lake, Alaska. M.S. thesis, University of Alaska Fairbanks. 109 pp.
- Kielland, K. 1989. Processes controlling nitrogen release and turnover in arctic tundra. Ph.D. thesis, University of Alaska Fairbanks. 177 pp.
- Klingensmith, K.M. 1981. Sediment nitrification, denitrification, and nitrous oxide production in an arctic lake. M.S. thesis, University of Alaska Fairbanks. 60 pp.
- Luecke, C. 1981. The effect of *Heterocope* predation on arctic pond zooplankton communities. M.S. thesis, University of Kansas.
- McKinley, V.L. 1981. Effect of hydrocarbons and pH on litter decomposition and primary production in an arctic lake. M.S. thesis, University of Cincinnati. 109 pp.
- Merrick, G.E. 1989. Lake trout (*Salvelinus namaycush*) and benthic community ecology in an arctic ecosystem. M.S. thesis, University of Minnesota, Duluth.
- Partusch-Talley, A. 1994. Microfaunal response to fertilization of an arctic tundra river. MS Thesis, University of North Carolina at Greensboro.
- Reed, M.C. 1993. Growth in arctic ground squirrels and the influence of a cache on hibernation and reproductive maturation. M.S. thesis, University of Alaska Fairbanks. 129 pp.
- Repasky, R.D. 1991. The development of the epilithic community in an arctic lake: responses to antibiotics and nutrient enrichment. M.S. thesis, University of Cincinnati.
- Ries, R. 1988. Foraging behavior of arctic grayling (*Thymallus arcticus*) in a tundra stream. M.S. thesis, University of Cincinnati.
- Robinson, DW. 1995. A biogeochemical survey of an arctic coastal wetland. M.S. Thesis, University of Alaska Fairbanks. 139 pp.
- Rovaneck, R.J. 1994. The hydrology and jurisdictional status of a wetland complex on the Alaskan arctic coastal plain. M.S. Thesis, University of Alaska Fairbanks. 139 pp.
- Schmidt, D.R. 1980. The planktivorous feeding ecology of arctic grayling (*Thymallus arcticus*). M.S. thesis, University of Kansas.
- Schneider, J.R. 1991. The effects of nutrient enrichment on the growth and morphology of mosses growing in an arctic lake. M.S. thesis, University of Cincinnati.
- Skvorc, P. 1980. Toxic effects of Prudhoe Bay crude oil on arctic freshwater zooplankton. M.S. thesis, University of Kansas.
- Sommer, M.E. 1979. Role of zooplankton grazers in determining composition and productivity of seston in arctic lakes and ponds. M.S. thesis, University of Cincinnati.
- Spatt, P.D. 1978. Seasonal variation of growth conditions in a natural and dust impacted *Sphagnum* (*Sphagnaceae*) community in northern Alaska. M.S. thesis, University of Cincinnati.
- Valentine, D. 1991. Influence of topography on soil acidity and hydrogen ion budgets in an arctic landscape. Ph.D. thesis, Duke University.
- Whalen, S.C. 1986. Pelagic nitrogen cycle in an arctic lake. Ph.D. thesis, University of Alaska Fairbanks. 169 pp.
- Wheeler, J. R. 1994. Factors affecting black fly abundance and distribution in an arctic stream. M. S. Thesis, University of Minnesota, Duluth.
- Yeakel, D. 1978. Primary production of epilithic periphyton in a deep arctic lake. M.S. thesis, University of Cincinnati.

Appendix 6.10

Contact Information for Toolik Field Station

University of Alaska Fairbanks, Institute of Arctic Biology Toolik Field Station

Please contact Logistics Services for a current User Handbook or Annual Field Station Summary Report.

Logistics Office

Logistics Services
Institute of Arctic Biology
University of Alaska Fairbanks
P.O. Box 757000
Fairbanks, AK 99775-7000
Phone: 907/474-7641
E-mail: fyiabl@aurora.alaska.edu

Mike Abels, *Field Operations Manager*
Phone: 907/474-5063
fnmaa@aurora.alaska.edu

World Wide Web

<http://zorba.uafadm.alaska.edu/iab/toolik/toolik.html>

Arctic Research Consortium of the United States
600 University Avenue, Suite 1
Fairbanks, Alaska 99709
Phone: 907/474-1600
Fax: 907/474-1604
arcus@polarnet.com
<http://arcus.polarnet.com>



Printed on recycled paper