

Regional (the Northwest Passage) outlook of 9/2011 sea ice from 7/1/2011

Jinlun Zhang

Polar Science Center, Applied Physics Lab, University of Washington

Regional outlook (the Northwest Passage): The Northwest Passage (NWP) is predicted to be completely open in September 2011 (Fig. 2a). Also, there is no significant uncertainty along most of the NWP as reflected in the standard deviation field (Fig. 2b). This suggests that the probability of being ice free in most of the NWP region in September 2011 is quite high.

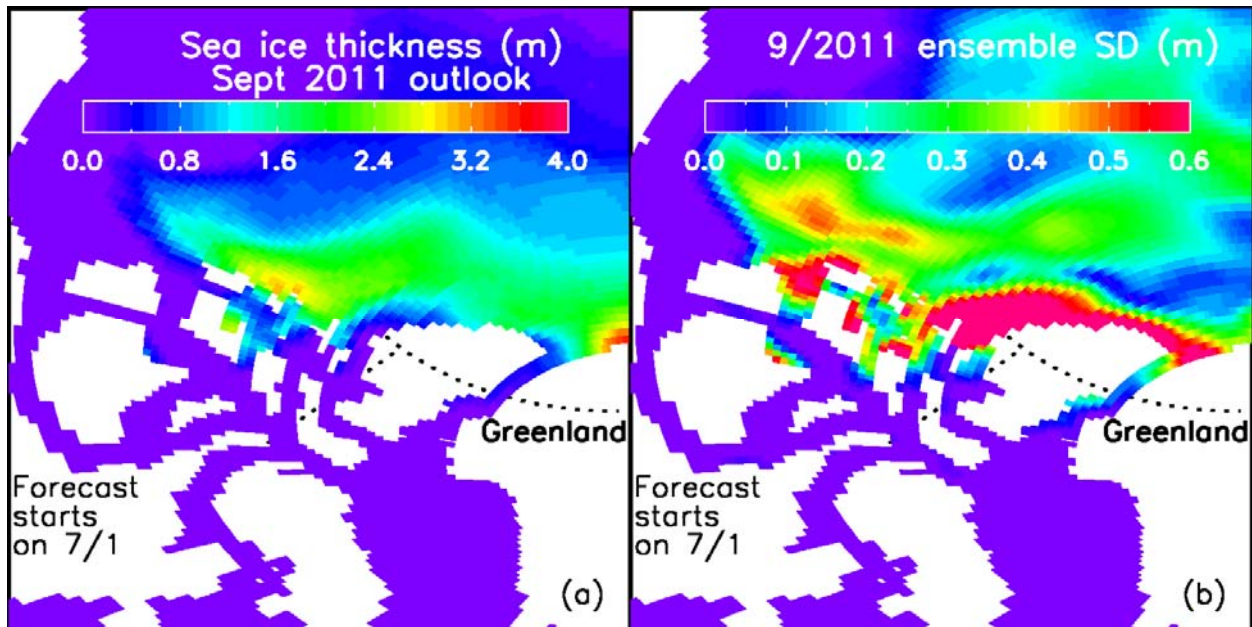


Figure 2. (a) Ensemble prediction of September 2011 sea ice thickness in the Northwest Passage region and (b) ensemble standard deviation (SD) of ice thickness which shows the uncertainty of the prediction.