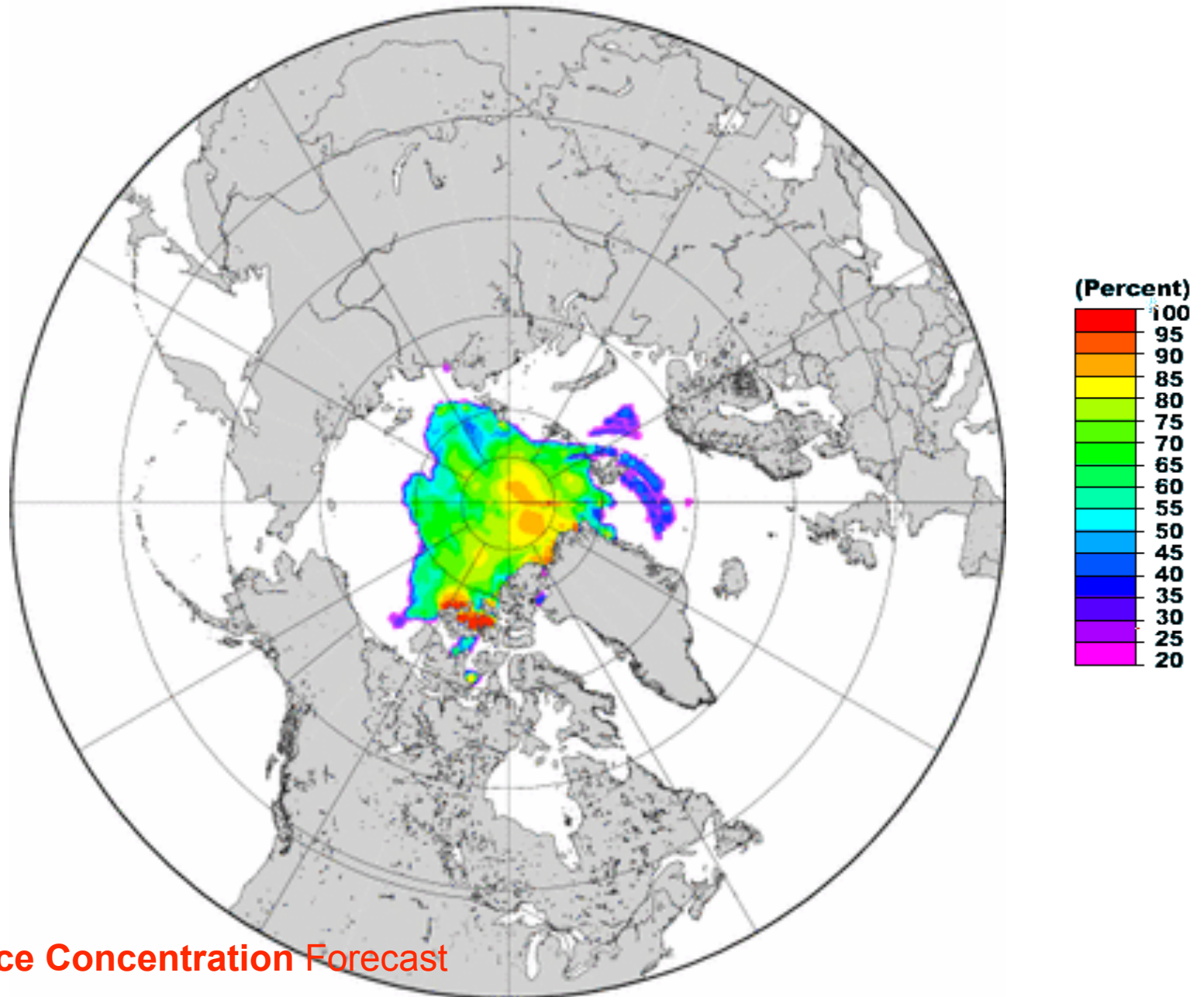


Simon Prinsenberg
2008 Sea Ice Minimum Summary Report

- The ice extent does not tell the complete story of sea ice loss; in 2008 we lost more Arctic ice in total and more of the thicker ice beyond 2007. Most of the ice shelf along the northern coast of the Canadian Arctic Archipelago is gone.

Ice debriefing sub-slides of
CCG ice debriefing September
2007, Icebreaking Program
Canadian Coast Guard by
Andy.Maillet@dfo-mpo.gc.ca

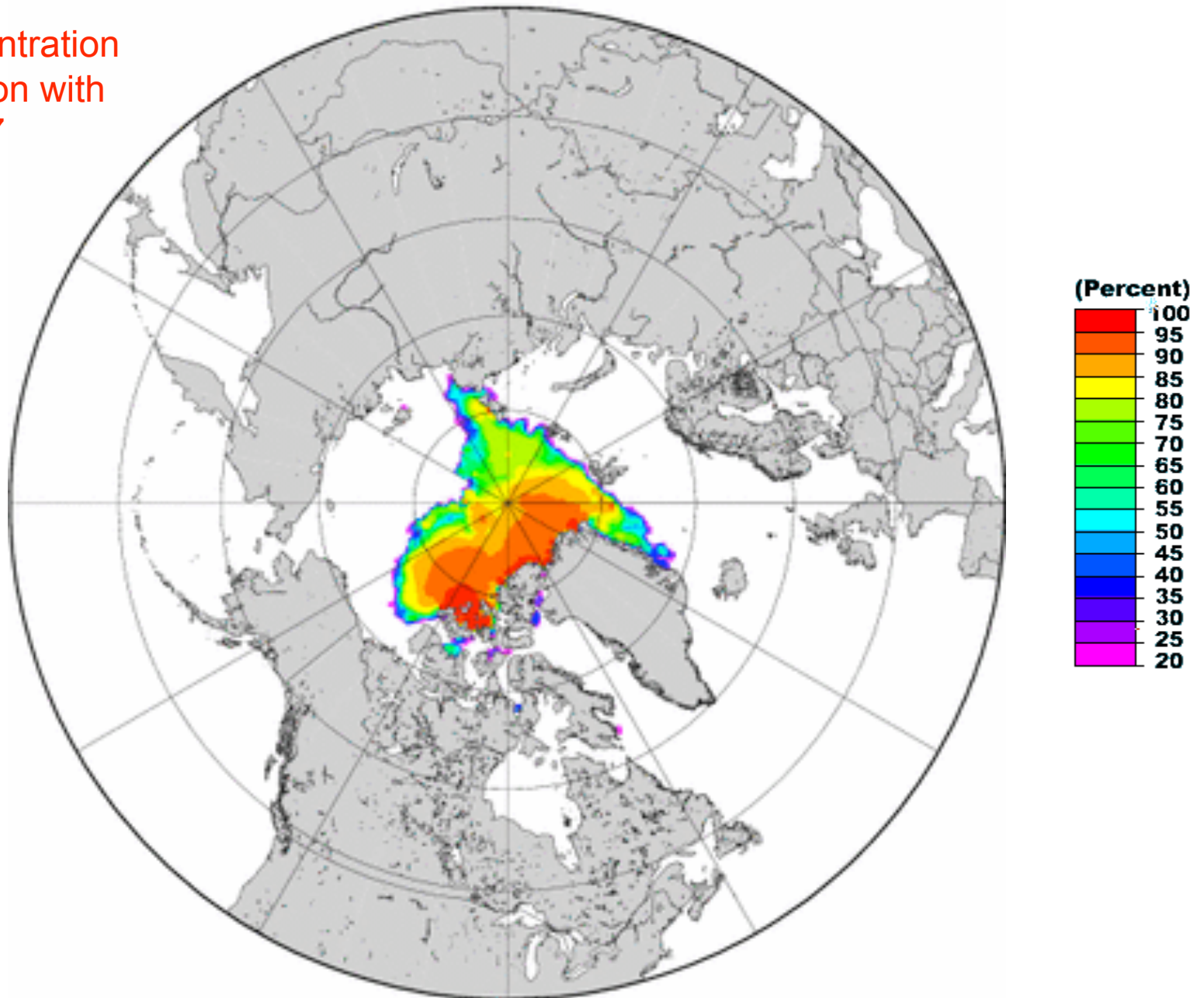
PIPS2.0 24hr forecast from 2008091900_024.dat
valid for 2008092000



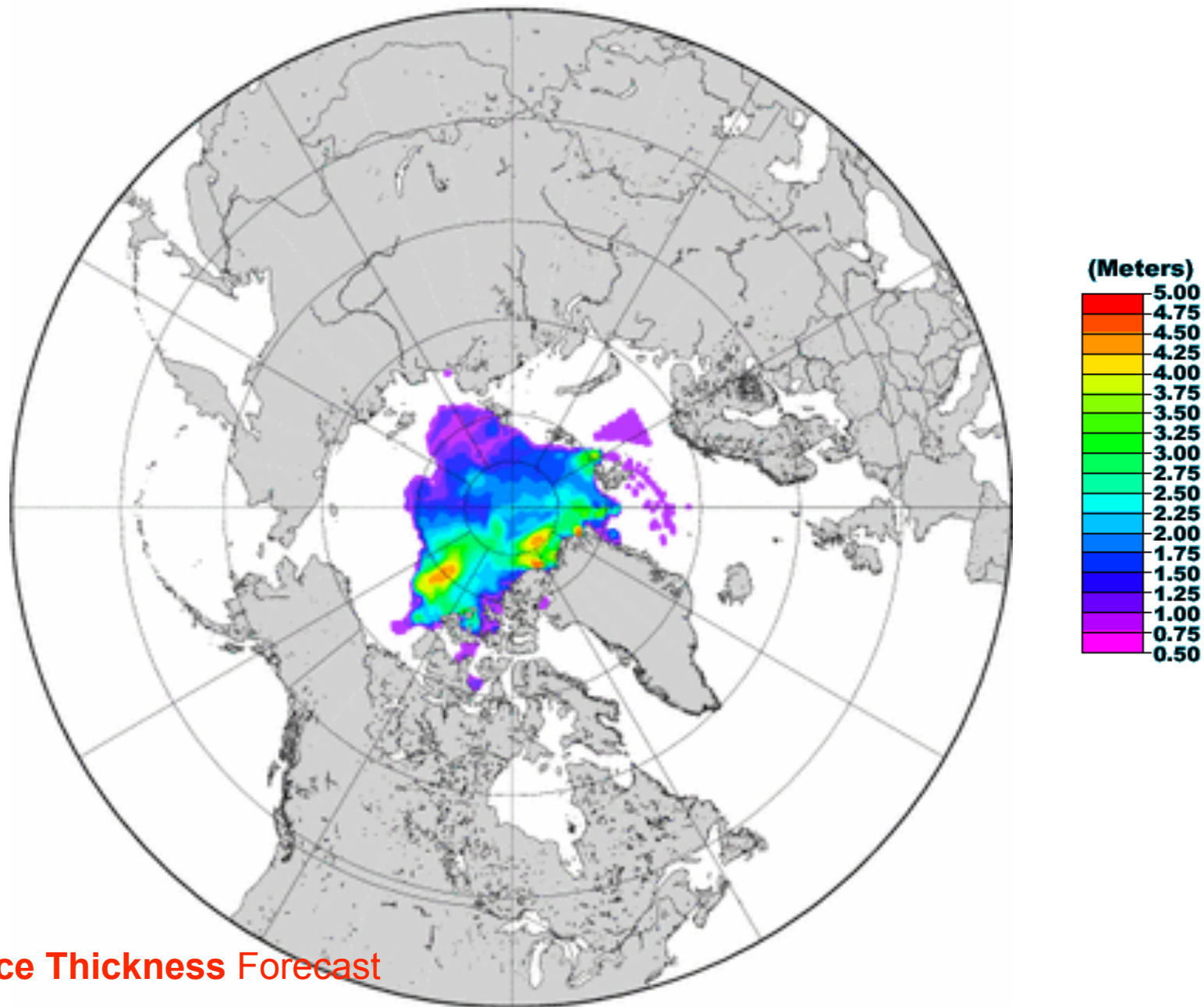
Tomorrow's Ice Concentration Forecast

PIPS2.0 24hr forecast from 2007091900_024.dat
valid for 2007092000

Ice Concentration
Comparison with
2007



PIPS2.0 24hr forecast from 2008091900_024.dat
valid for 2008092000



Tomorrow's Ice Thickness Forecast

PIPS2.0 24hr forecast from 2007091900_024.dat
valid for 2007092000

Ice Thickness
Comparison with
2007

