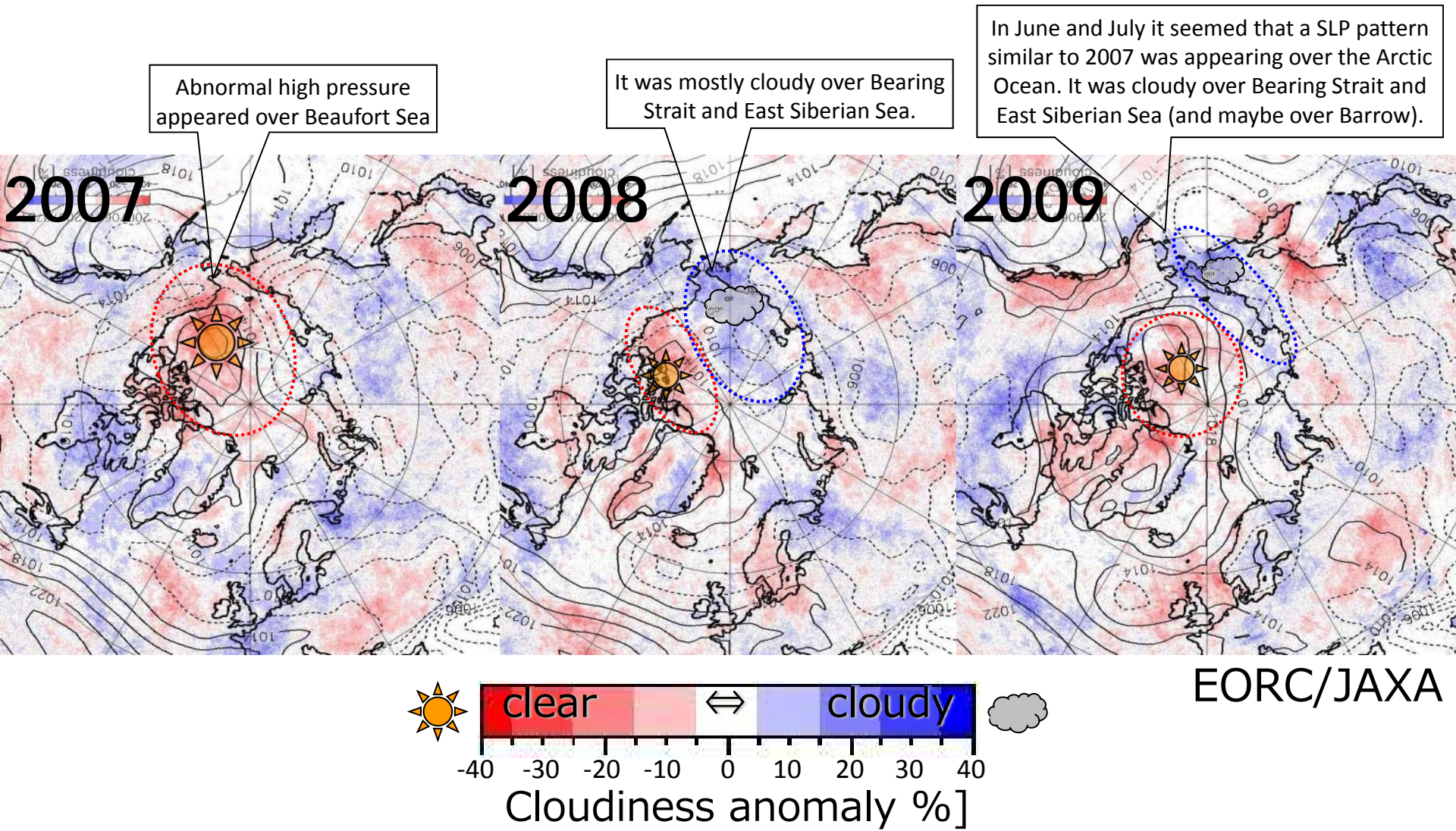


Cloudiness anomaly in June-July (2-month average)



EORC/JAXA

MODIS

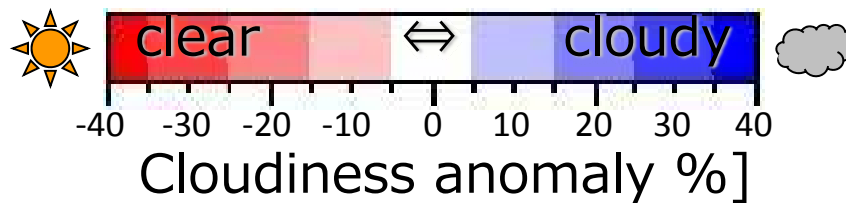
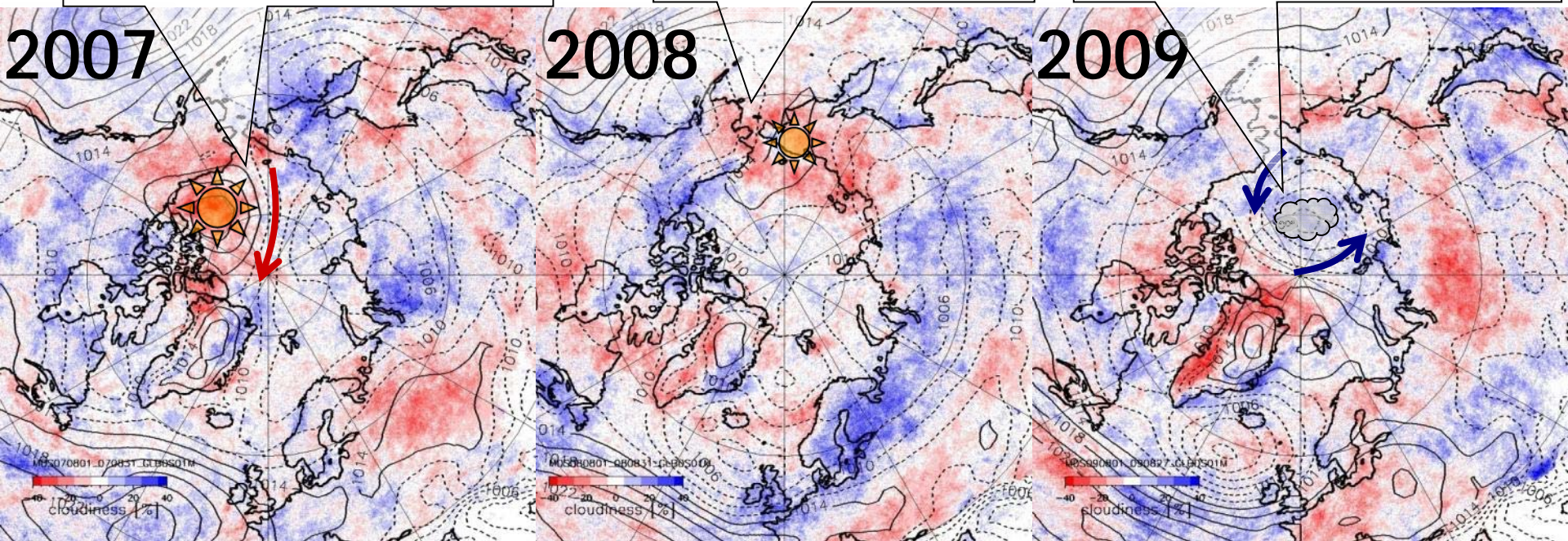
Contour with solid and broken lines are Sea Level Pressure from NCEP/NCAR reanalysis data

Cloudiness anomaly in August (1-month average)

The abnormal high pressure pattern persisted in August. After sea ice concentration began to reduce in the Arctic Ocean, sea ice could be forced to move by strong southerly wind.

Sunny weather appeared over Bearing Strait and East Siberian Sea. Wind speed seem to be calm over the Arctic Ocean in this season.

Atmospheric pressure pattern had drastically changed in August. Low pressure persisted over the Arctic Ocean and it was mostly cloudy there. Wind pattern seems unfavorable for ice reduction.



Anomaly from 10-year average (2000-2009)

EORC/JAXA

MODIS

Contour with solid and broken lines are Sea Level Pressure from NCEP/NCAR reanalysis data