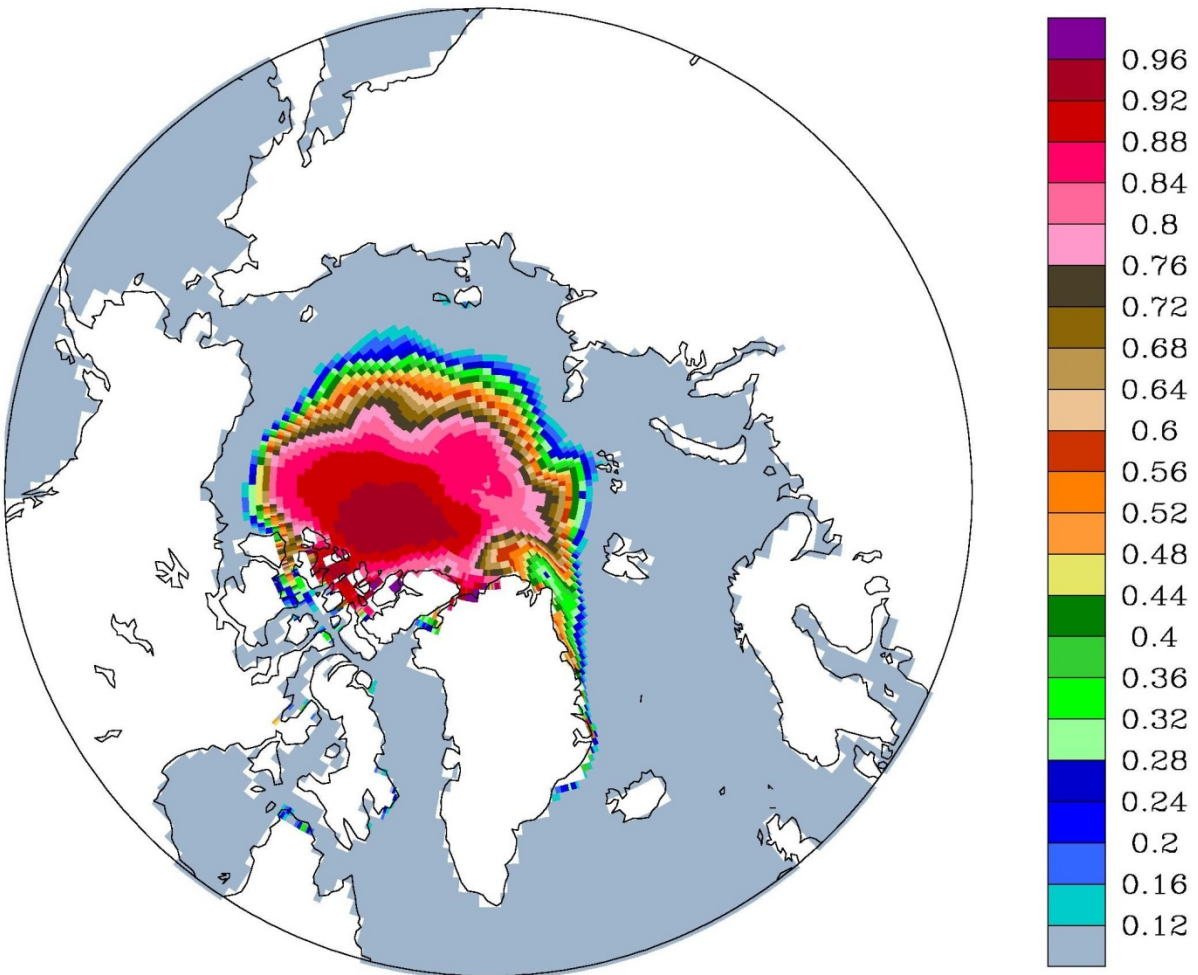


Sea Ice Outlook for September 2014
Modeling Contributions for the August Regional Report

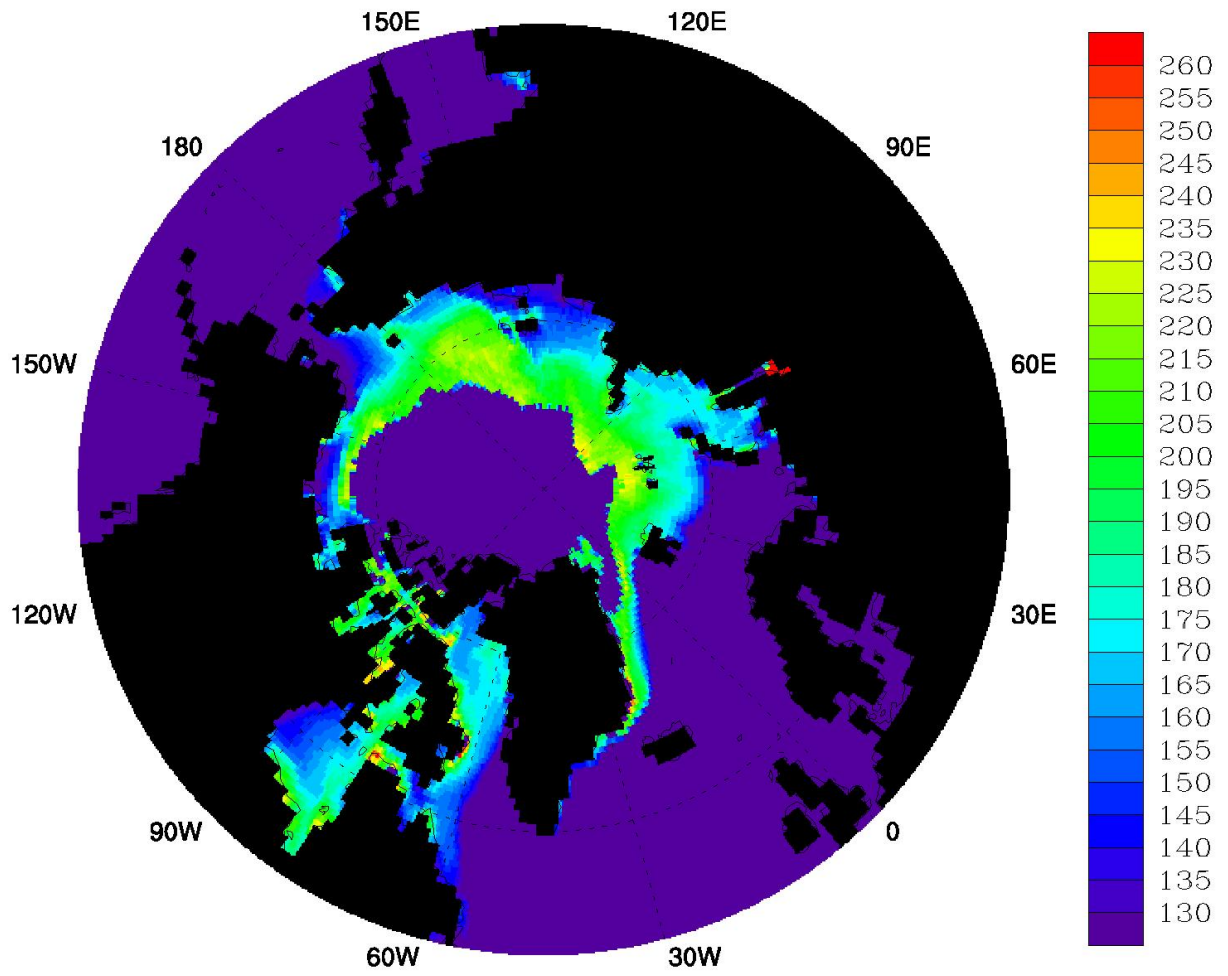
NASA Global Modeling and Assimilation Office

Richard I. Cullather, Christian L. Keppenne, Jelena Marshak, Steven Pawson,
Siegfried D. Schubert, Max J. Suarez, Guillaume Vernieres, Bin Zhao

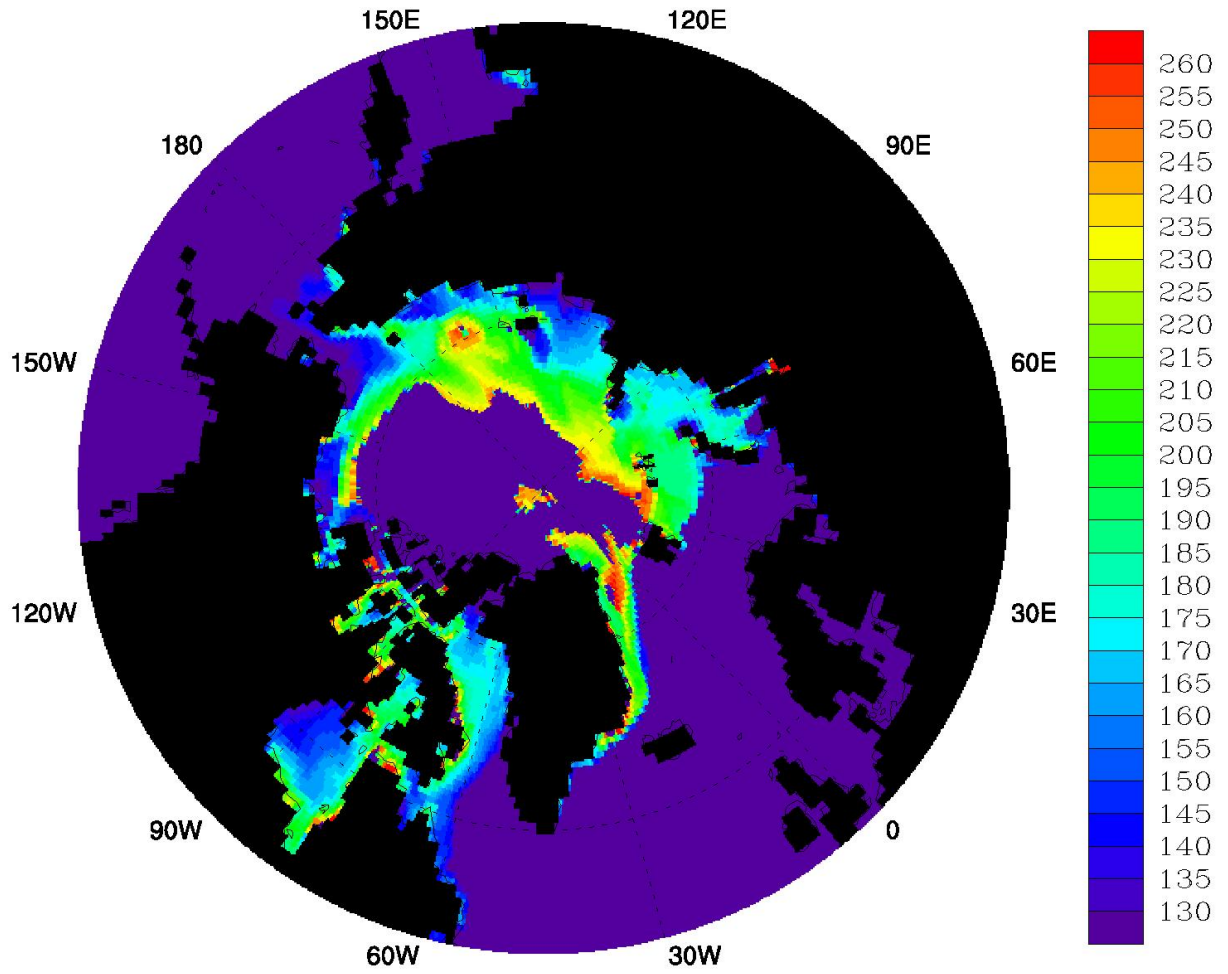
Ensemble Average Sea Ice Concentration (uncorrected)



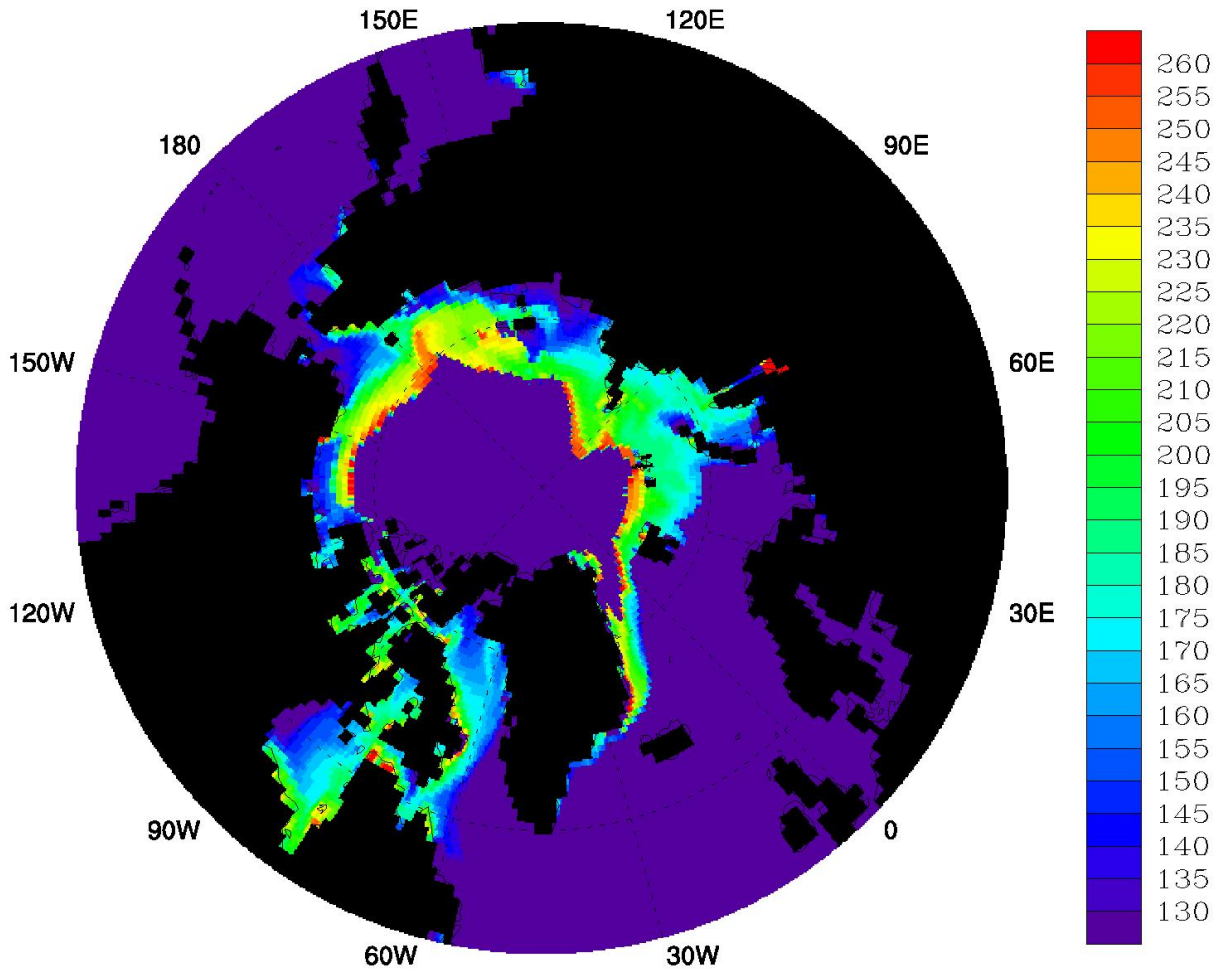
Median Julian Day



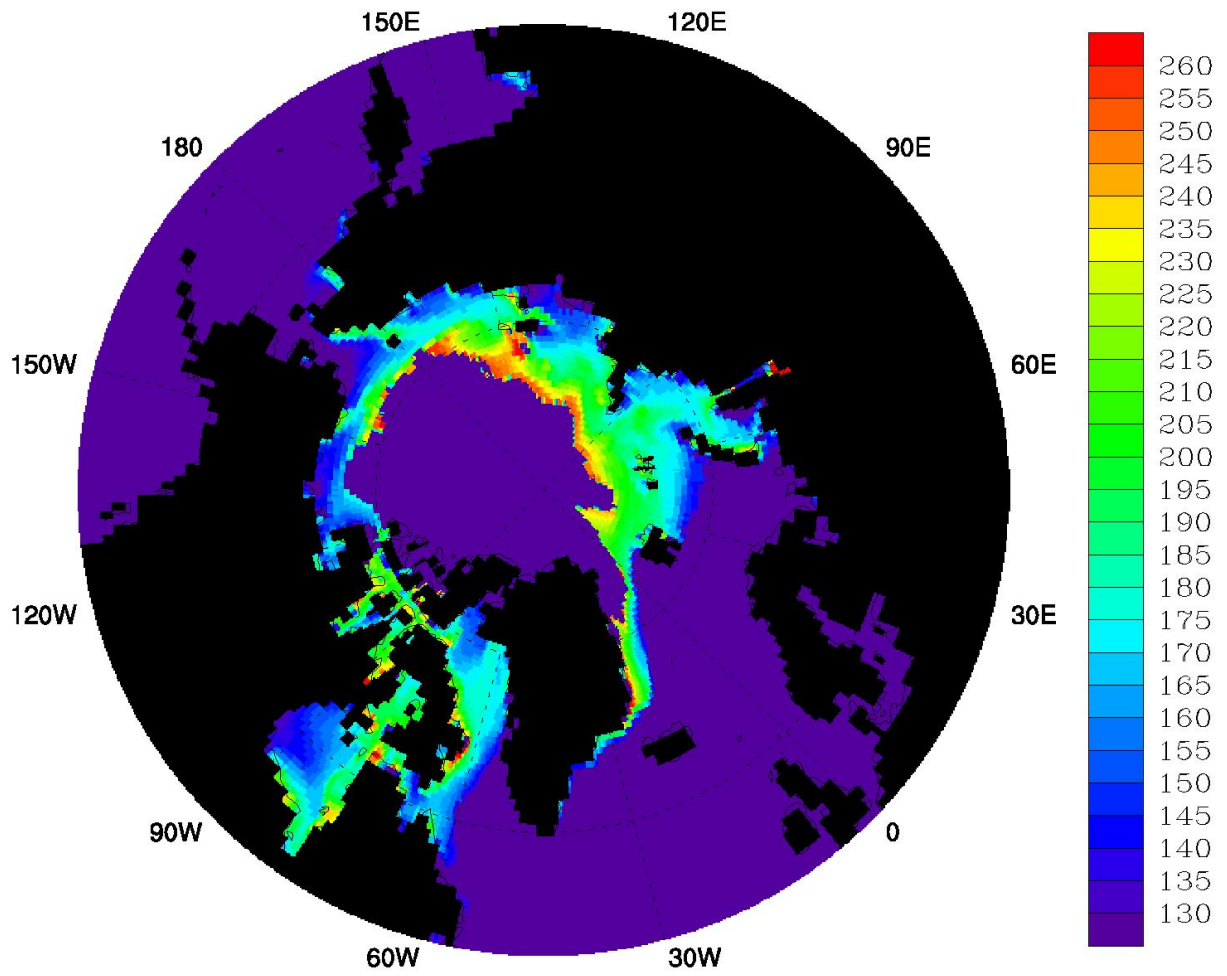
Apr11 Ensemble 1



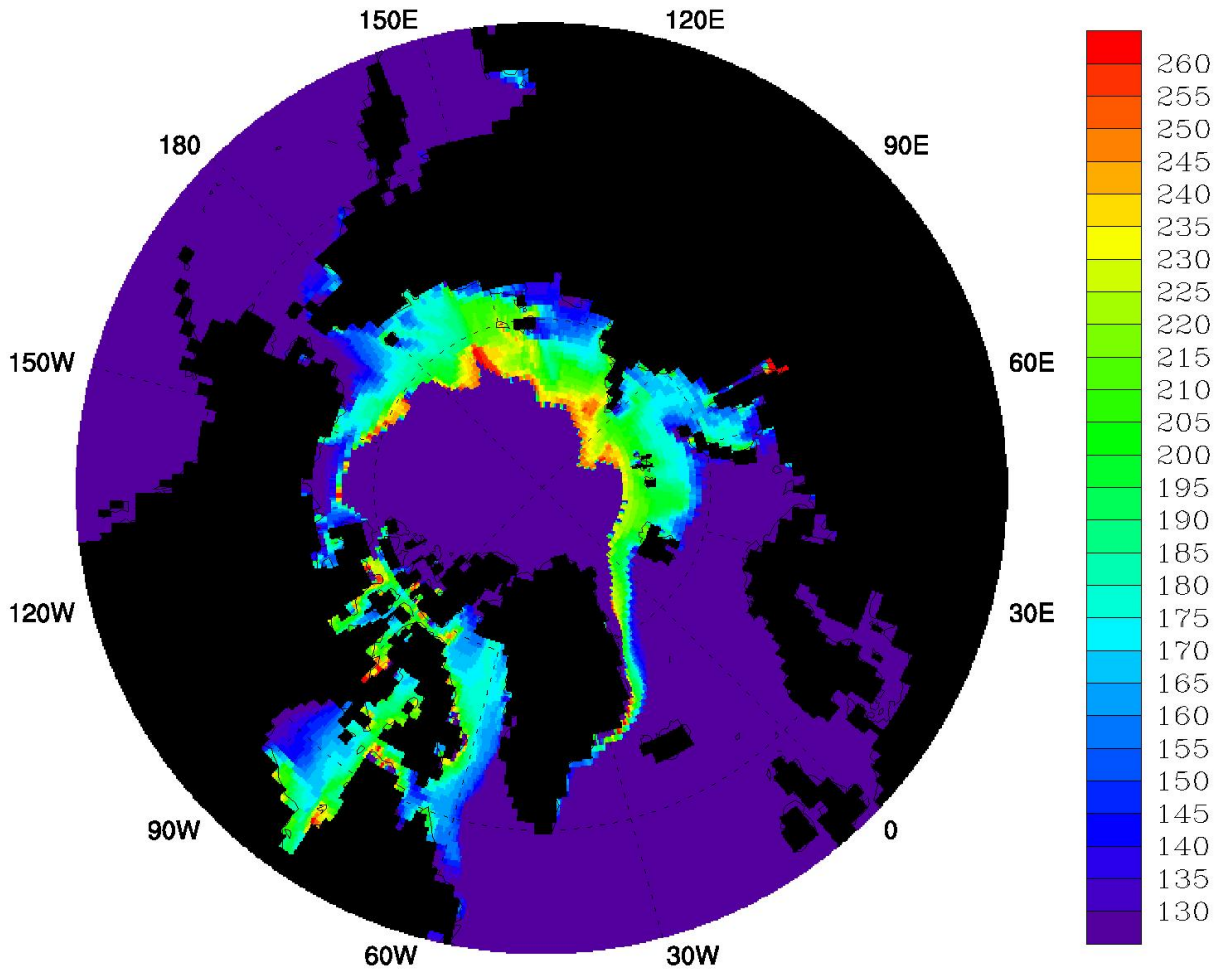
Apr16 Ensemble 1



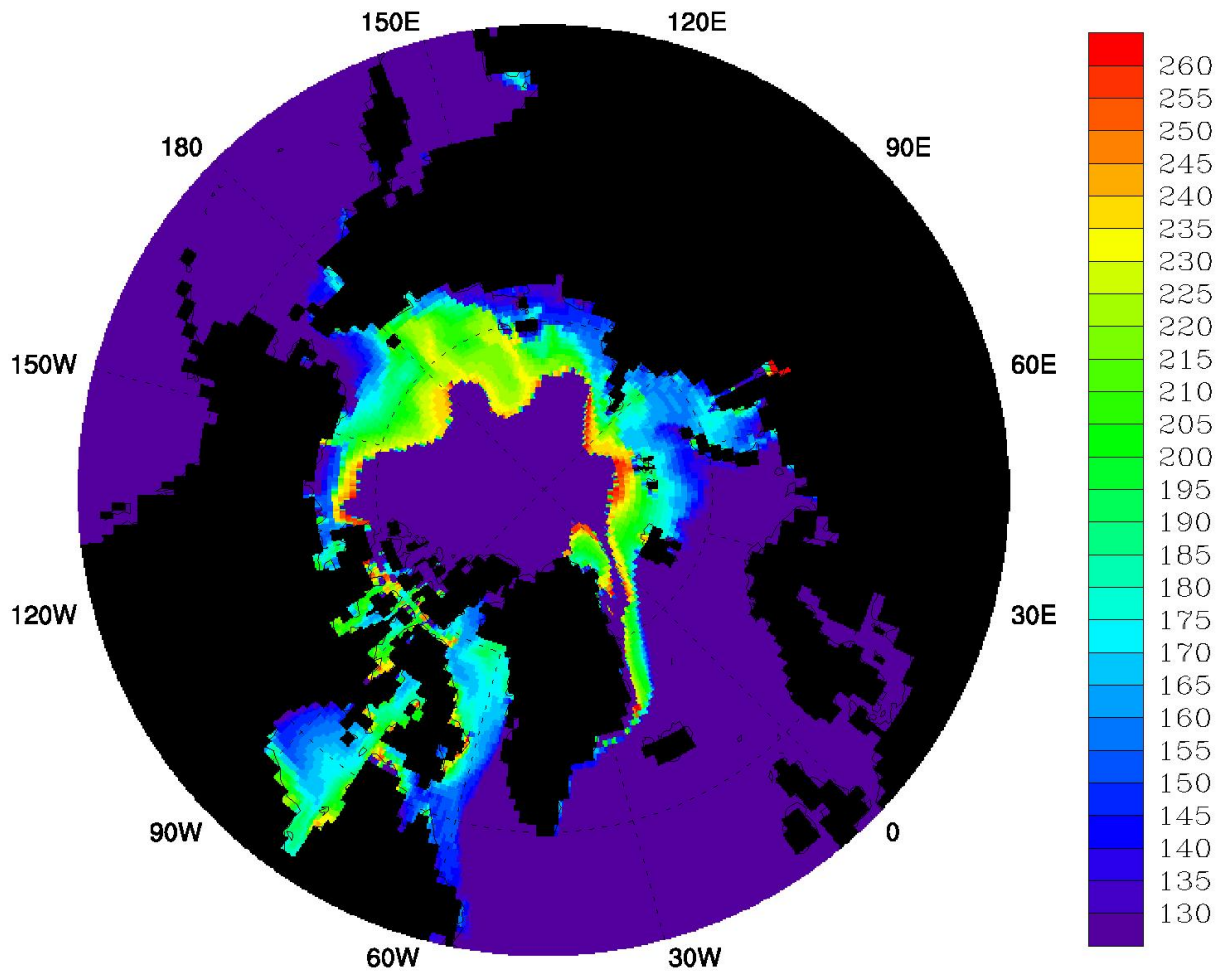
Apr21 Ensemble 1



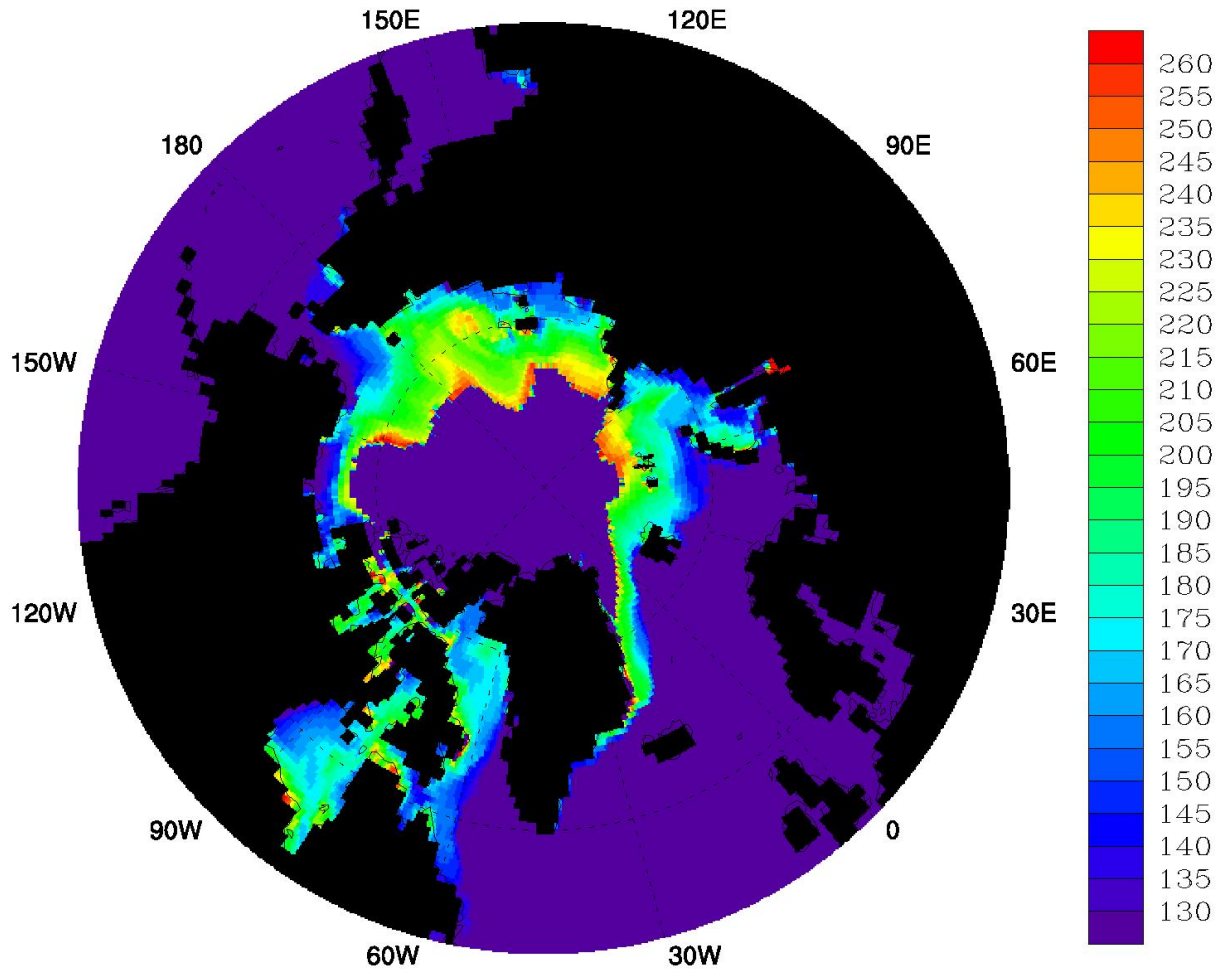
Apr26 Ensemble 1



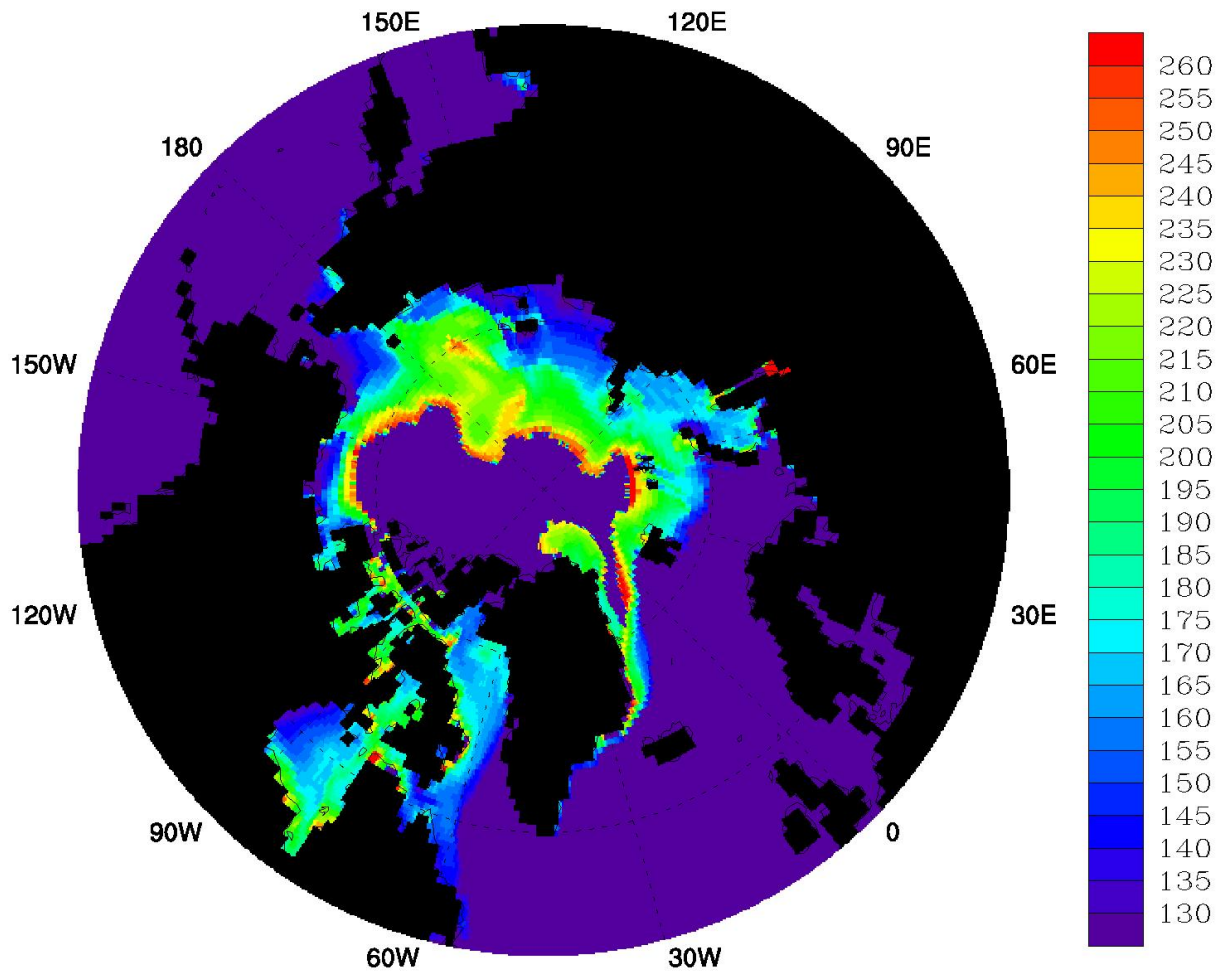
May01 Ensemble 1



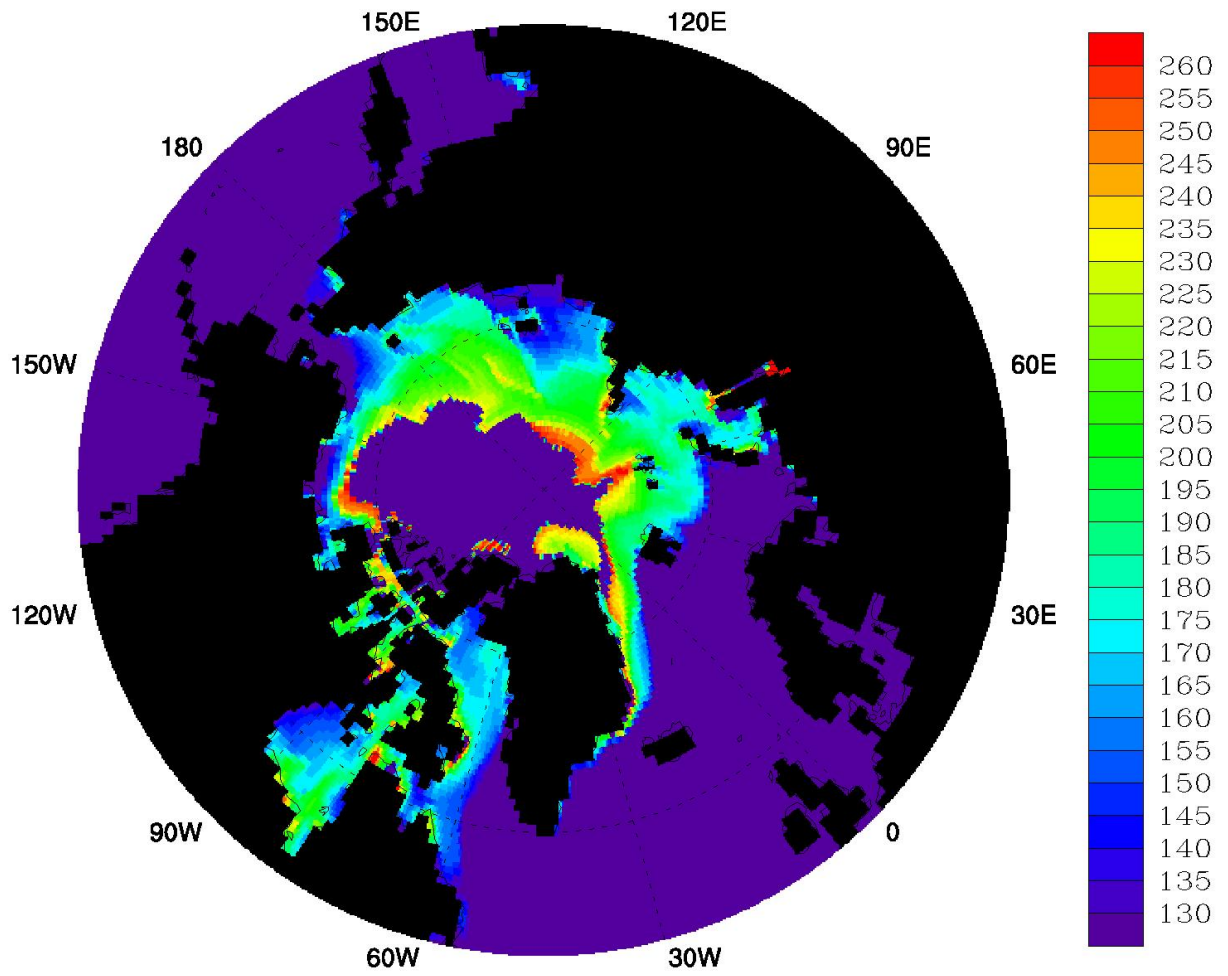
May01 Ensemble 2



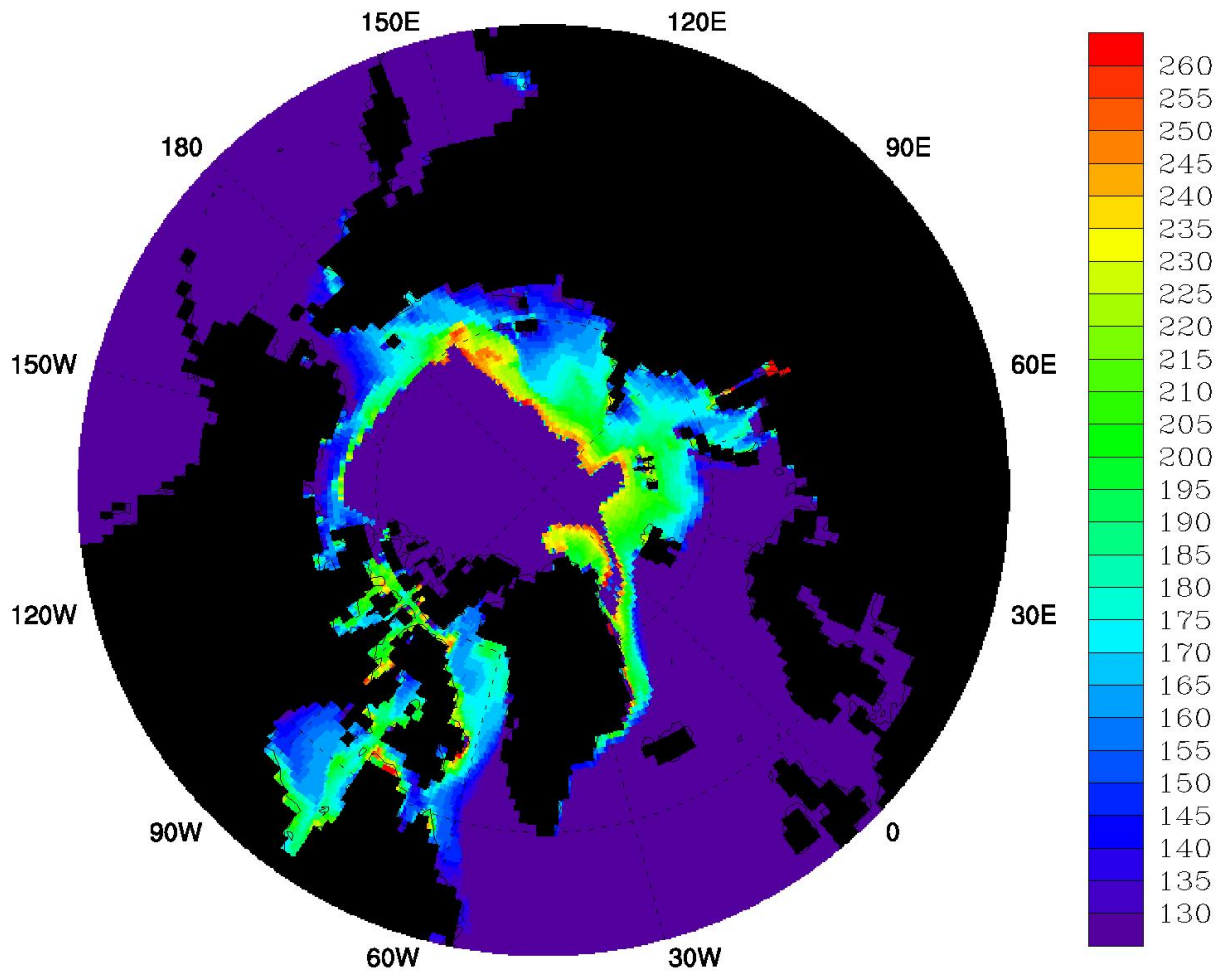
May01 Ensemble 3



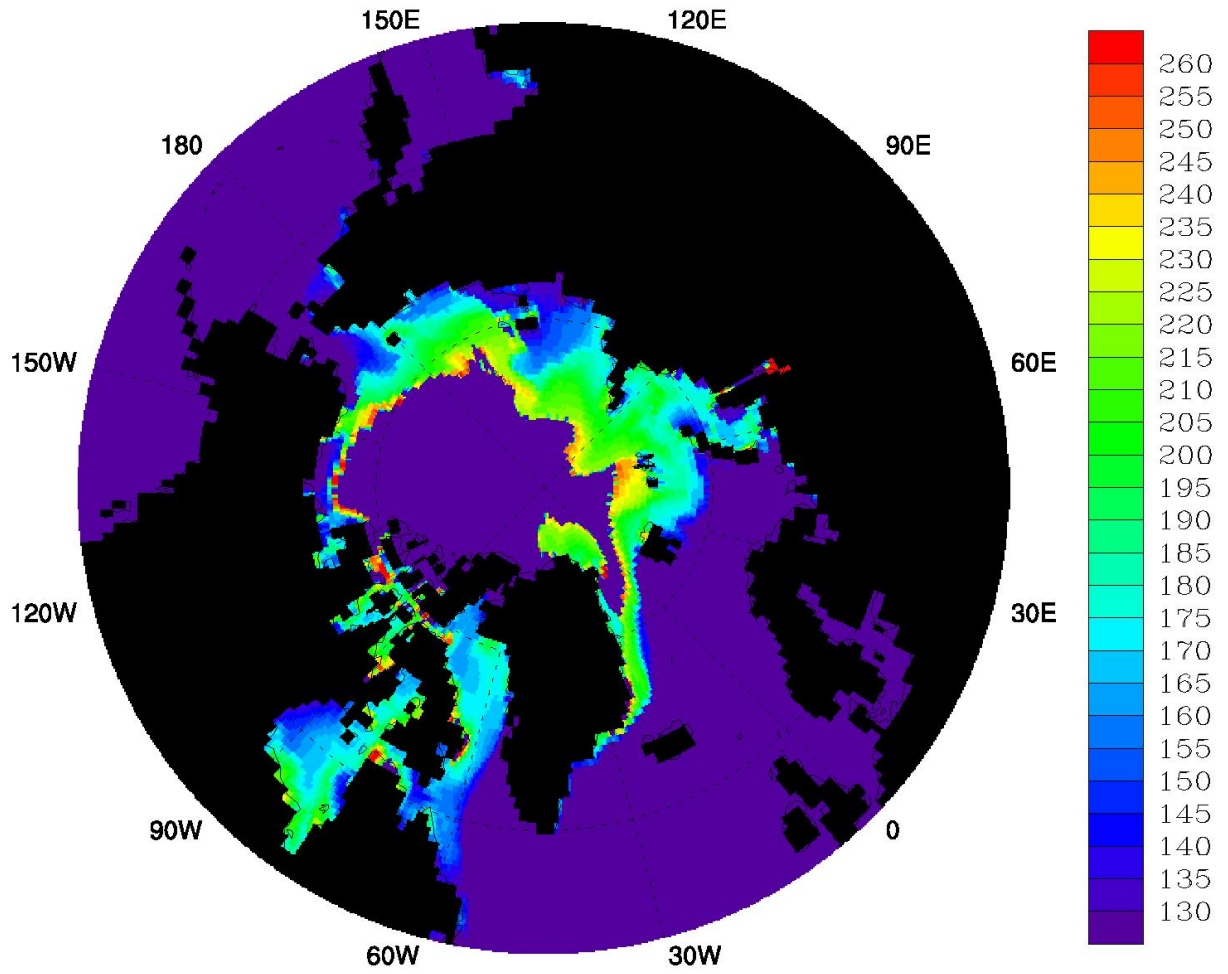
May01 Ensemble 4



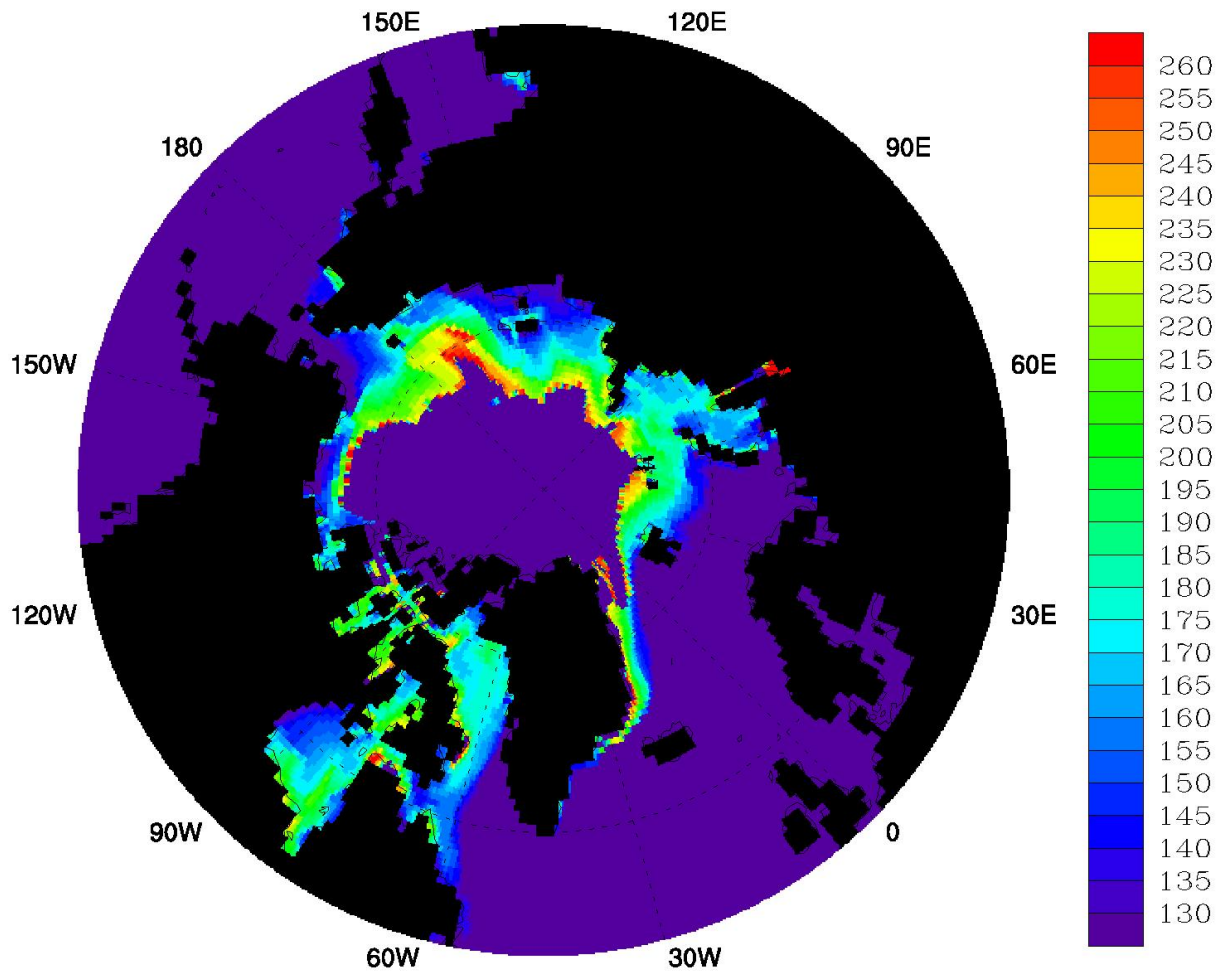
May01 Ensemble 5



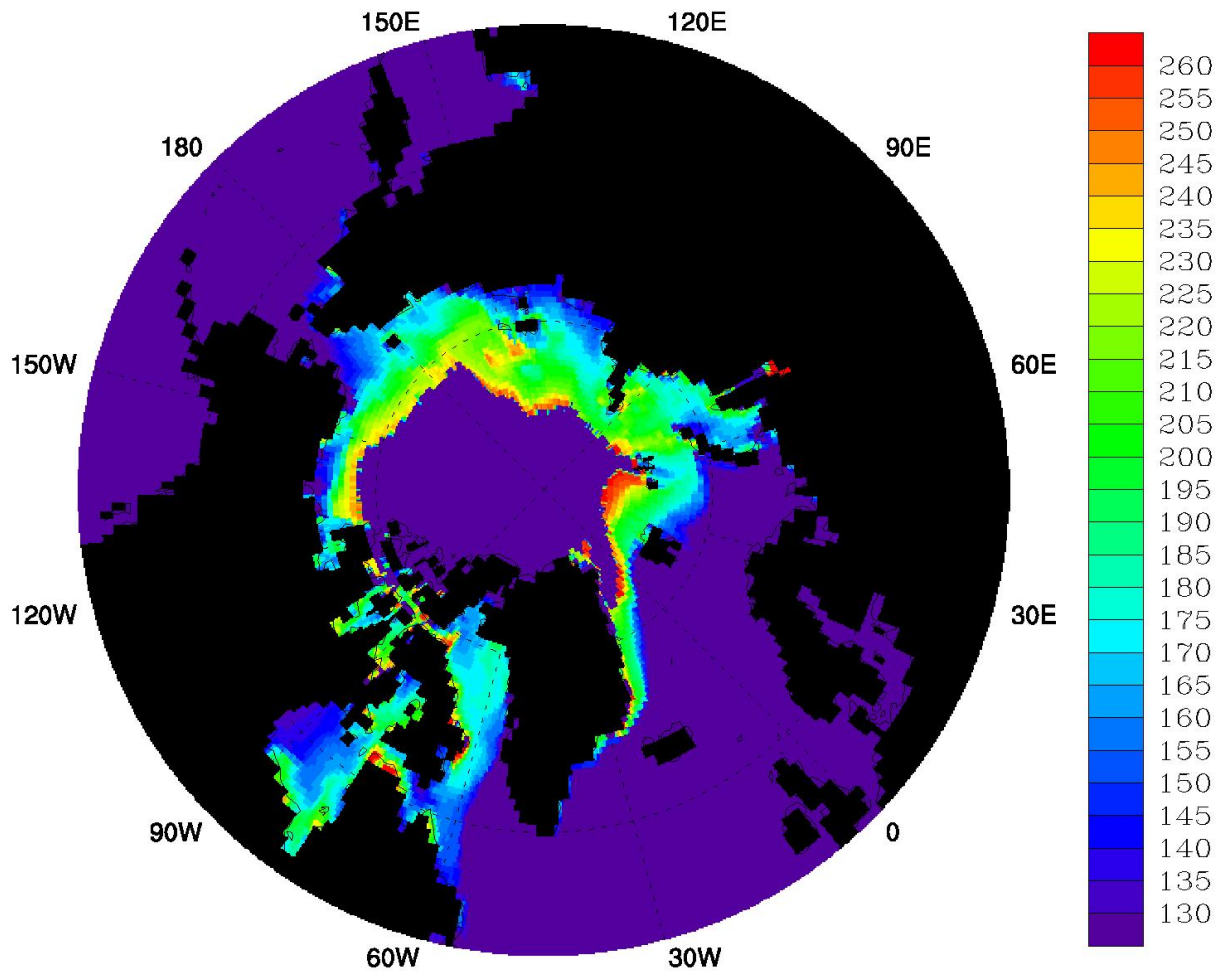
May01 Ensemble 6



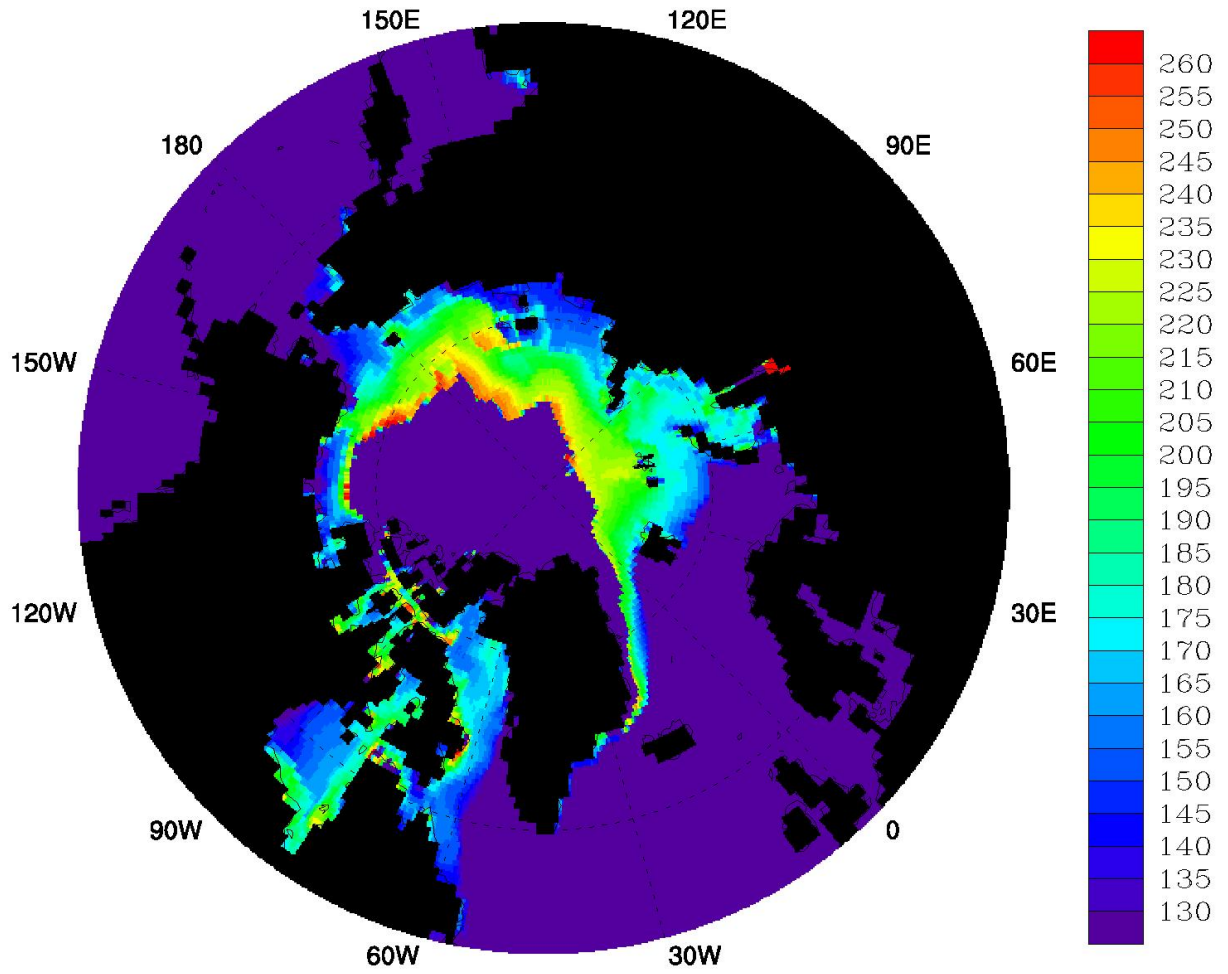
May01 Ensemble 7



May01 Ensemble 8



May01 Ensemble 9



May01 Ensemble 10

