

Sea Ice Outlook 2016 based on AMSR2 ice extent

Lars Kaleschke

Institute for Oceanography, University of Hamburg, lars.kaleschke@uni-hamburg.de

June 12, 2016

Executive summary

I provide a simple statistical estimate for the September sea ice extent based on the total sea ice extent measured on June 11: 3.8 ± 1.0 .

For regular updates of the graphs follow me on Twitter @seaice_de.

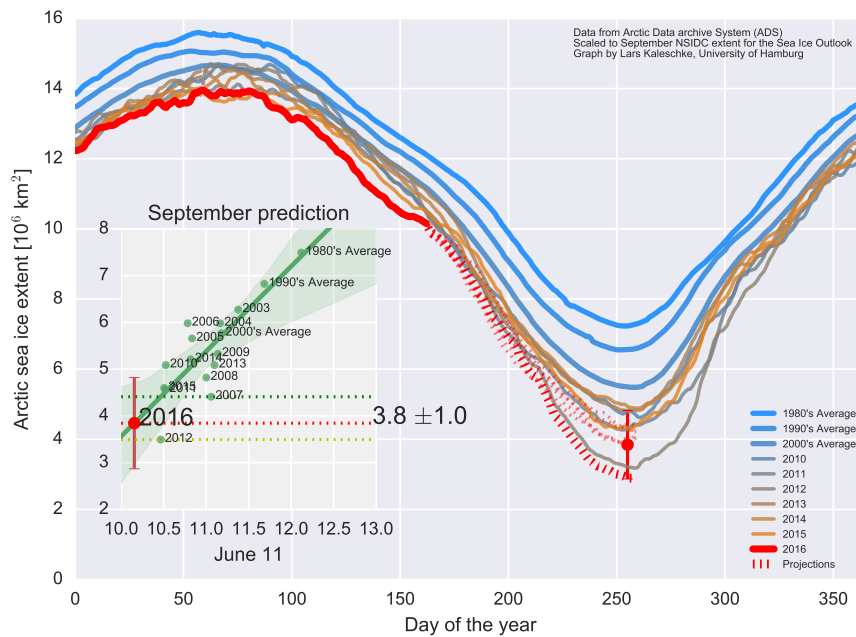


Figure 1: Sea ice extent from ADS, projections based on past declines, and statistical regression based on June 11 (x-axis) and Sept (y-axis) scaled to NSIDC monthly values. Uncertainties are given with 3σ intervals.

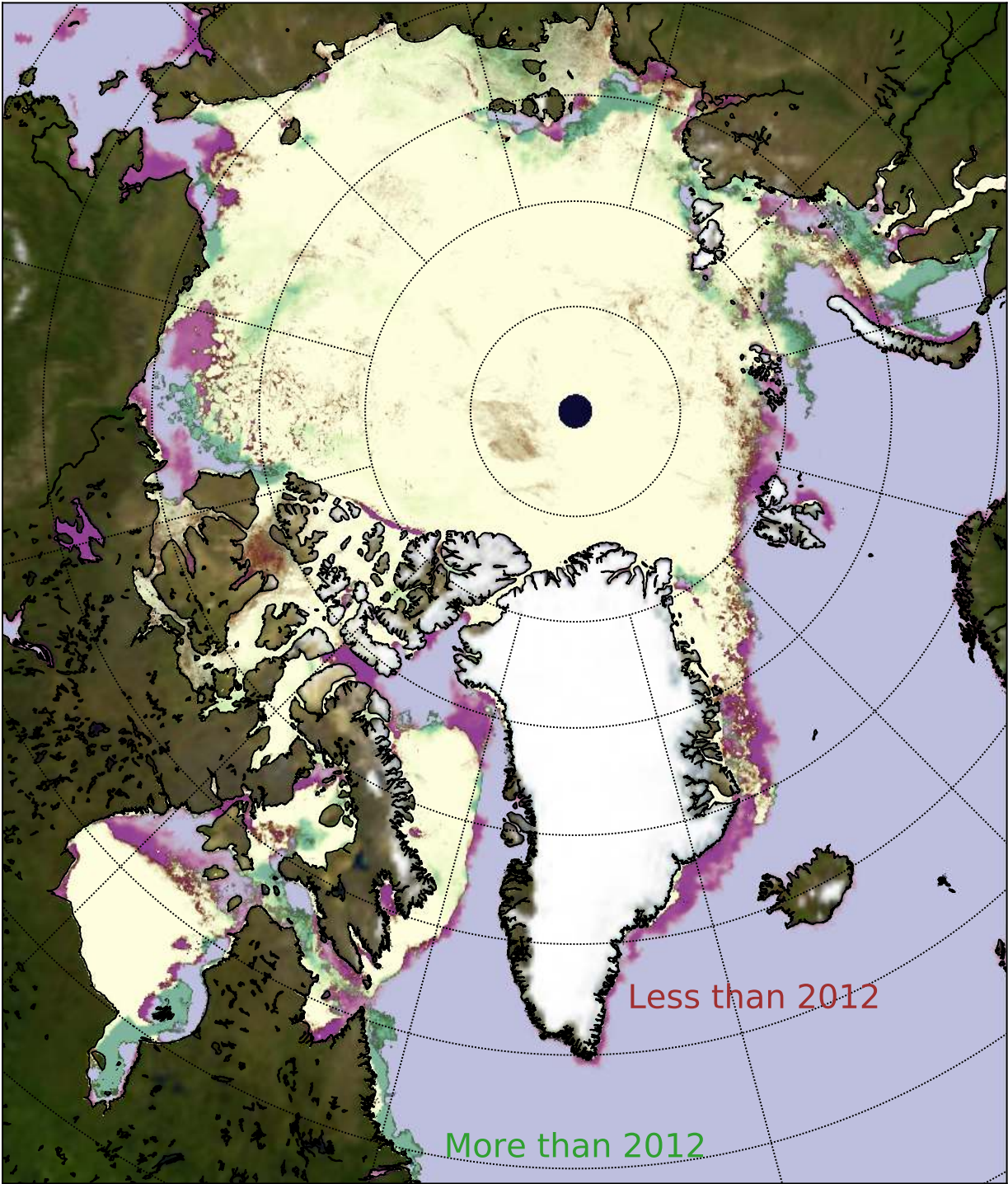


Figure 2: Sea ice concentration from AMSR2 on 11 June 2016 and color coded difference to 2012; ASI algorithm 3 km resolution for AMSR2 2016, 12.5 km for SSMIS in 2012.