

**Public Contribution**

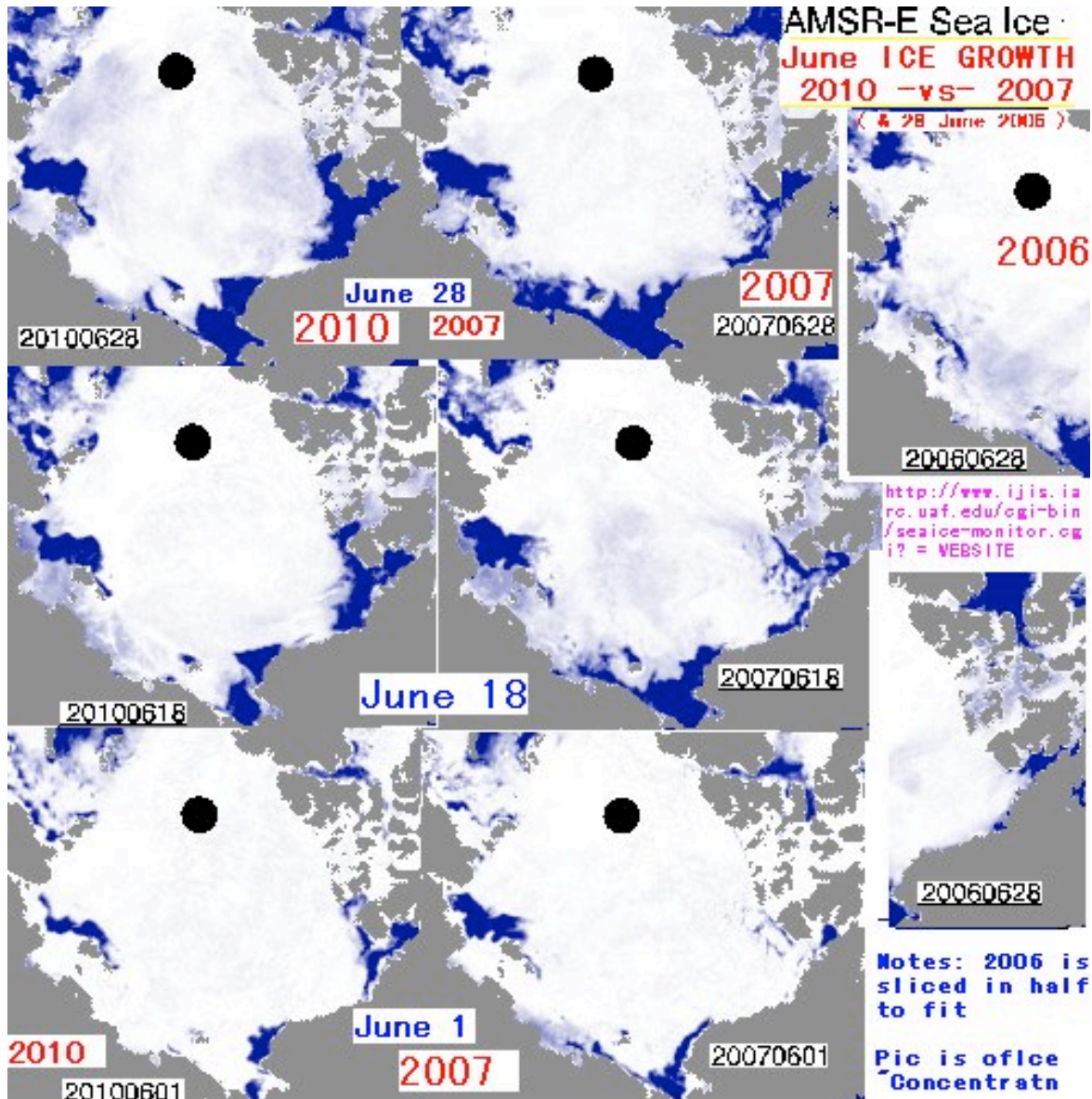
**2010 Sea Ice Outlook  
July Report**

Charles Wilson

Charles Wilson: Prediction 1 million Sq. Km.

The El Nino of this year was the entire basis of my Prediction - - that is, that the EXTREME year of 2007 would be repeated - - and even More strongly.

As such, note NOT ONLY the fact that Ice-Loss has rapidly caught up with the 2007 pace & gone into record Low Territory in All extent & Area indexes (Jaxa, Bremen, NSIDC, Norsex's 4 Charts) & Piomas's Volume - - but that the Open water Polynnya are at the same 3 PLACES.as in 2007. The Fall in Indexes could be just Luck. This is like a Fingerprint.



## Public Contribution

I think PIOMAS is showing a near constant Acceleration that may be from the Ice-to-Water Albedo-Feedback effect.

My figures below are from superimposing the PIOMAS charts for Current Anomaly & the Verification Chart that showed the ICESAT's exact measurements. (Both at the Polar Ice Center). From November 1st Icesat data I infer a September Minimum by simply subtracting the same amount Piomas decreased in that time-span.

Figures are in km<sup>3</sup> Ice "LEFT" i.e. above "Zero Ice" (exception: Piomas Coordinates measure: Down from Average) P+I refers to Piomas + ICEbridge:

----- ICESAT / PIOMAS Current Piomas Chart Reads:

'06-7 Change: 4000 --- ---- 2700 P

2007 Sept. \_\_ 5050d ----- 6350 P

2007 Nov. \_\_ 6000 --- ---- 7300 P - 8200 Icesat / - 6900 Piomas

2009 Sept. - - - - ? - - - - - 5800 P+I

2010 17 Apr. - - - - - = 6400 P+I -7800 Anomaly

2010 18 June - - - - - = 3500 P -10700 Anomaly

Zero Ice at -14200 Anomaly -14,200 Anomaly

The loss rate for 2010 from 17-April to June = 62-days = for a fall from 6400 km<sup>3</sup> LEFT to 3500 = LOSS OF 2900 km<sup>3</sup> = LOSS RATE of 327.4 km<sup>3</sup> lost/week = 10.7 weeks left until hit Zero, roughly the start of September.

